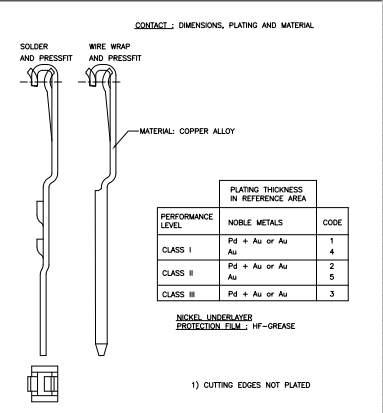
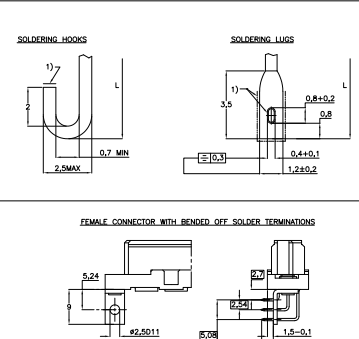
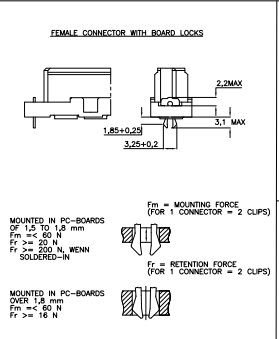
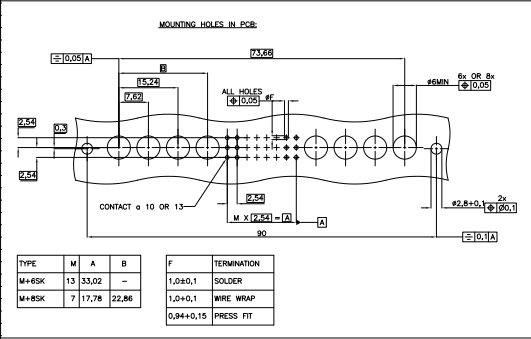


REV.	DATE	DESCRIPTION	BY	CHK	APP.
H	02-08-03	SR10-0177-03			KV
B3	02-08-03				AEG/MKC
B4	02-08-03				SKAWITD
B5	02-08-03				MKC

TERMINATION STYLES	L	CODE
SOLDER TERMINATIONS	2.9±0.3	01
SOLDER SOLDER	3.7±0.3	05
SOLDER SOLDER	4.5±0.3	02
SOLDER SOLDER	6.3±0.3	03
WIRE WRAP	7.3±0.3	04
WIRE WRAP	13±0.5	40
SOLDERING-HOODS	5.5±0.3	30
SOLDERING-HOODS	10±0.5	35
SOLDER BEHEDED OFF	3-4	10
SOLDER BEHEDED OFF	1.55-0.4	00
TERMINATION WITH GALVANIC Sn PLATING		



V42254- B 2 * * * - M ***

CODE 2 = BASIC VERSION

CODE 9 = VERSION WITHOUT FLANGES

CODE FOR PERFORMANCE LEVEL

CODE FOR TERMINATION STYLE

STYLE, NO. OF CONTACTS AND CONTACT ASSIGNMENT SEE DATA-BOOK

THIS DRAWING IS A CONTROLLED DOCUMENT.

INTECHNOLOGIE

DATE: 02/08/03

PROJ. NAME: RECEPTACLE ASSEMBLY EUROCARD

PROJ. NO.: 100779

REVISION: 1

DATE: 02/08/03

CUSTOMER DRAWING: 1393640-1

SCALE: 1:1


PROJ. MGR: K. VON DER

DATE: 02/08/03

DATE: 02/08/03

PRODUCT DESCRIPTION CODE	TE PN	STYLE & NUMBER OF POSITIONS	TERMINATION POSTS	LOADED ROWS	PERFORMANCE LEVEL	BOARD LOCKS
V42254-B2101-M420	1-1393640-3	M42+6	2,9MM STRAIGHT SOLDER LEADS	EVERY ROW , EVERY PITCH	1	NO
V42254-B2110-M240	4-1393640-1	M24+8	RIGHT-ANGLE SOLDER LEADS WITH MOUNTING BRACKET	EVERY ROW , EVERY PITCH	1	NO
V42254-B2110-M420	4-1393640-2	M42+6	RIGHT-ANGLE SOLDER LEADS WITH MOUNTING BRACKET	EVERY ROW , EVERY PITCH	1	NO
V42254-B2135-M240	5-1393640-3	M24+8	5,5 / 10MM SOLDER LUGS	EVERY ROW , EVERY PITCH	1	NO
V42254-B2135-M420	5-1393640-4	M42+6	5,5 / 10MM SOLDER LUGS	EVERY ROW , EVERY PITCH	1	NO
V42254-B2140-M240	6-1393640-4	M24+8	13MM STRAIGHT WIRE-WRAP PINS	EVERY ROW , EVERY PITCH	1	NO
V42254-B2140-M420	6-1393640-5	M42+6	13MM STRAIGHT WIRE-WRAP PINS	EVERY ROW , EVERY PITCH	1	NO
V42254-B2201-M240	9-1393640-7	M24+8	2,9MM STRAIGHT SOLDER LEADS	EVERY ROW , EVERY PITCH	2	NO
V42254-B2201-M410	9-1393640-9	M42+6	2,9MM STRAIGHT SOLDER LEADS	EVERY ROW , EVERY PITCH	2	YES
V42254-B2201-M420	1393641-1	M42+6	2,9MM STRAIGHT SOLDER LEADS	EVERY ROW , EVERY PITCH	2	NO
V42254-B2201-M423	1393641-2	M42+6	2,9MM STRAIGHT SOLDER LEADS	ROW A+C , EVERY PITCH	2	NO
V42254-B2202-M240	4-1393641-2	M24+8	4,5MM STRAIGHT SOLDER LEADS	EVERY ROW , EVERY PITCH	2	NO
V42254-B2202-M420	4-1393641-4	M42+6	4,5MM STRAIGHT SOLDER LEADS	EVERY ROW , EVERY PITCH	2	NO
V42254-B2202-M420B	4-1393641-5	M42+6	4,5MM STRAIGHT SOLDER LEADS	EVERY ROW , EVERY PITCH	2	NO
V42254-B2203-M240	6-1393641-0	M24+8	6,3MM STRAIGHT SOLDER LEADS	EVERY ROW , EVERY PITCH	2	NO
V42254-B2240-M240	2-1393642-3	M24+8	13MM STRAIGHT WIRE-WRAP PINS	EVERY ROW , EVERY PITCH	2	NO
V42254-B2240-M420	2-1393642-5	M42+6	13MM STRAIGHT WIRE-WRAP PINS	EVERY ROW , EVERY PITCH	2	NO

1) ACCORDING TO BT 236 LEVEL 2.
 ACTIVE PART NUMBERS.
 CONTACT TYCO ELECTRONICS FOR OTHER CONFIGURATION AVAILABILITY

THIS DRAWING IS A CONTROLLED DOCUMENT.		UNISENSEN 180790		Tyco Electronics Corporation *Hartgenbosch, Nederland	
DIMENSIONS mm	STANDARD SYMBOLS	PROJECT NAME	DATE	RECEPTACLE ASSEMBLY EUROCARD TYPE M WITH 6 AND 8 SPECIAL CONTACTS (PIN# 42254-B2210-M42+6-77925)	
				SIZE	DRAWING NO
				A1	007790-4-1393640-1
					REV. DATE
					NTS
					2
					BR