

4

3

2

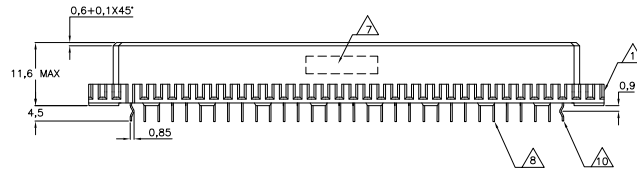
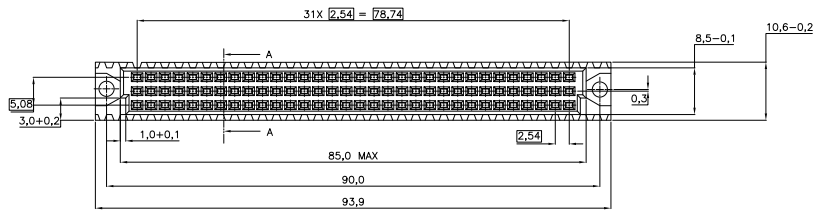
1

THIS DRAWING IS UNPUBLISHED. RELEASED FOR PUBLICATION.
 © COPYRIGHT BY TYCO ELECTRONICS CORPORATION. ALL INTERNATIONAL RIGHTS RESERVED.

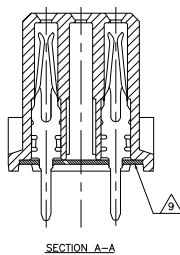
LOC	DIST	REVISIONS					
H	-	F	LR	DESCRIPTION	DATE	BY	APPD
		E		EH0039-92	12-11-92	LvdH	J.v.G
		F		EH-1253-96	05-11-97	LvdH	J.G
		G		ECR-07-020965	22-08-08	AEG	MKO

NOTES:

- 1 CONNECTOR MEETS THE REQUIREMENTS ACC. DIN 41612, PART 5.
- 2 MATERIAL CONTACT: PHOSPHORBRONZE. MATERIAL HOUSING: GLASSFILLED THERM. POLYESTER. COLOR: GREY.
- 3 AT CONTACT AREA 1,25 µm GOLD OVER 1,25 µm NICKEL AT SOLDER POST AREA 1,25 µm TIN.
- 4 AT CONTACT AREA 0,8 µm GOLD OVER 1,25 µm NICKEL AT SOLDER POST AREA 1,25 µm TIN.
- 5 CONTACT ARRANGEMENTS: AN AN ASTERISK " * " DENOTES A SIGNAL CONTACT. AN ASTERISK " * " DENOTES A KINKED SIGNAL CONTACT.
- 6 AT CONTACT AREA 0,4 µm GOLD OVER 1,25 µm NICKEL AT SOLDER POST AREA 1,25 µm TIN.
- 7 CONNECTOR PRINTED WITH PARTNUMBER AND DATECODE ON OUTSIDE OF MATING AREA AT SIDE OF ROW c.
- 8 SOLDER POSTS SUITABLE FOR 1,0 NOM. P.C.B. HOLES.
- 9 FLUX RESISTANCE STRIP.
- 10 KINKED POSTS.
- 11 AT CONTACT AREA 0,1 µm GOLD OVER 0,7 µm PALLADIUM (DURAGOLD) OVER 1,25 µm NICKEL, AT SOLDERPOST AREA 1,25 µm TIN.



c	b	a	
X	o	X	1
X	o	X	2
X	o	X	3
X	o	X	4
X	o	X	5
X	o	X	6
X	o	X	7
X	o	X	8
X	o	X	9
X	o	X	10
X	o	X	11
X	o	X	12
X	o	X	13
X	o	X	14
X	o	X	15
X	o	X	16
X	o	X	17
X	o	X	18
X	o	X	19
X	o	X	20
X	o	X	21
X	o	X	22
X	o	X	23
X	o	X	24
X	o	X	25
X	o	X	26
X	o	X	27
X	o	X	28
X	o	X	29
X	o	X	30
X	o	X	31
X	o	X	32



OBsolete	WITH	WITHOUT	FINISH	MATERIAL	PARTNUMBER
OBsolete	WITH	WITHOUT	△	△	7-216097-4
OBsolete	WITH	WITHOUT	△	△	6-216097-4
OBsolete	WITH	WITHOUT	△	△	1-216097-4
OBsolete	WITH	WITHOUT	△	△	216097-8
OBsolete	WITH	WITHOUT	△	△	216097-4
OBsolete	WITH	WITHOUT	△	△	216097-1

THIS DRAWING IS A CONTROLLED DOCUMENT. DIM: J.V. LIEMPT 1910091
 OR: J. GIBBELS 1910097
 Tyco Electronics Corporation
 's-Hertogenbosch, Nederland

DIMENSIONS: mm	TOLERANCES UNLESS OTHERWISE SPECIFIED:	PRODUCT SPEC	SIZE	DATE CODE	DRAWING NO.	RESTRICTED TO
0 PLC ± 0,1	1 PLC ± 0,05	APPLICATION SPEC	A2	00779	216097	
2 PLC ±	3 PLC ±	WEIGHT				
4 PLC ±	ANGLES ± 0,3°	FINISH				

CUSTOMER DRAWING SCALE: NTS SHEET 1 of 1 REV: G