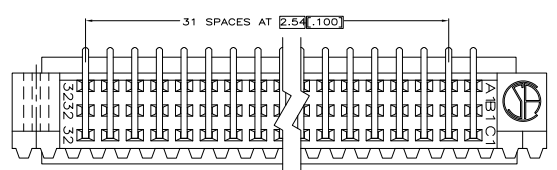
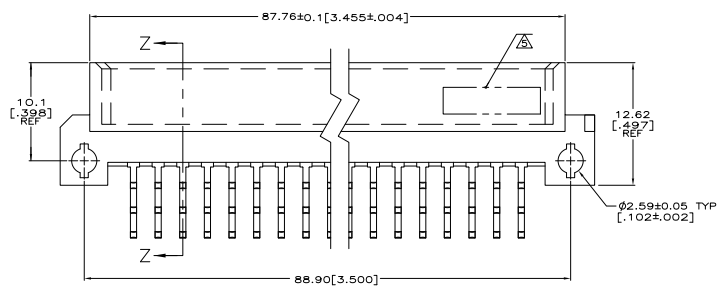
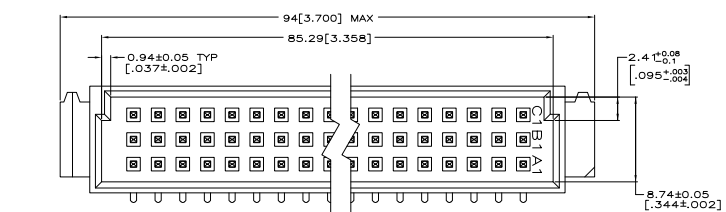
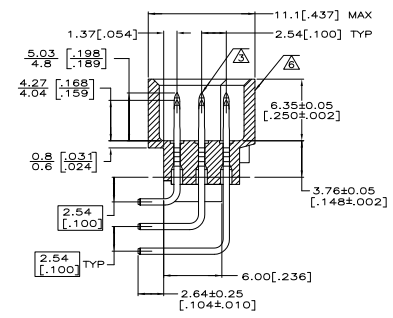


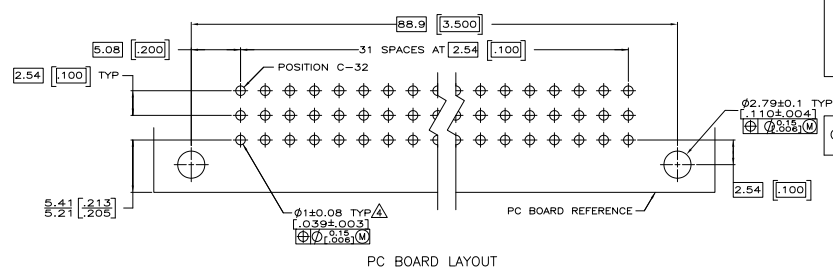
REV	DATE	DESCRIPTION	BY	CHK	APP
01		REVISED FOR ECO-07-018843		DH	DB
03		REVISED FOR ECO-08-017437		140CTOR	AEG DB



- △ HOUSING MATERIAL: GLASS-FILLED POLYMER.
- △ POST MATERIAL: COPPER ALLOY.
- △ POST FINISH: DIN 41612 CLASS 2 IN CONTACT AREA. TIN PLATE ON POSTS.
- △ RECOMMENDED HOLE SIZE FOR MANUAL APPLICATION OF CONNECTOR ONTO PC BOARD.
- △ [PART NUMBER, DATE CODE] MARKED THIS APPROXIMATE AREA.
- △ MARKING ON THIS SIDE.



ROW	NO. OF LOADED POSITION	ASSY PART NUMBER
2-31	1,32	C 32
1-32	NONE	B 32
2-32	1	A 32
2-4,7-32	NONE	C 29
1,9-31	8,32	B 26
1,2,4,6-9-32	NONE	A 29
1,5,7,32	2-4,6,8-31	C 32
6,8,14,16,18,20,26,28	1-5,7,9-13,15,17,19,21-25,27,29-32	B 32
1,32	2-31	A 32
3,6,9,12,15,18,31,32	1,2,4,5,7,8,10,11,13,14,16,17,19-30	C 32
2,3,6-28	1,4,5,27-32	B 32
2,5,8,11,14,17,20	1,3,4,6,7,9,10,12,13,15,16,18,19,21-32	A 32
1,32	2-31	C 32
NONE	1-32	B 32
1,32	2-31	A 32
9	1-8,10-32	C 32
20,23	1-19,21,22,24-32	B 32
9,11,15,17,19	1-8,10,12-14,16,18,20-32	A 32
1,32	2-31	C 32
1,32	2-31	B 32
1,32	2-31	A 32



POSITIONS LOADED WITH 4,3X[.194] CONTACTS	POSITIONS LOADED WITH 4,1X[.164] CONTACTS	ROWS	NO. OF LOADED POSITION	ASSY PART NUMBER
2-31	1,32	C	32	1-5536437-9
1-32	NONE	B	32	
2-32	1	A	32	1-5536437-7
2-4,7-32	NONE	C	29	
1,9-31	8,32	B	26	1-5536437-3
1,2,4,6-9-32	NONE	A	29	
1,5,7,32	2-4,6,8-31	C	32	
6,8,14,16,18,20,26,28	1-5,7,9-13,15,17,19,21-25,27,29-32	B	32	1-5536437-2
1,32	2-31	A	32	
3,6,9,12,15,18,31,32	1,2,4,5,7,8,10,11,13,14,16,17,19-30	C	32	1-5536437-1
2,3,6-28	1,4,5,27-32	B	32	
2,5,8,11,14,17,20	1,3,4,6,7,9,10,12,13,15,16,18,19,21-32	A	32	5536437-6
1,32	2-31	C	32	
NONE	1-32	B	32	
1,32	2-31	A	32	5536437-4
9	1-8,10-32	C	32	
20,23	1-19,21,22,24-32	B	32	
9,11,15,17,19	1-8,10,12-14,16,18,20-32	A	32	

THIS DRAWING IS A CONTROLLED DOCUMENT.

INCHES	MILLIMETERS	DATE	BY	CHKD	APP'D
1/16	1.588				
1/8	3.175				
3/16	4.763				
1/4	6.350				
5/16	7.938				
3/8	9.525				
7/16	11.113				
1/2	12.700				
5/8	15.875				
3/4	19.050				
7/8	22.225				
1	25.400				

ASSEMBLY, PIN, EUROCARD, TYPE C, 96 POSITION, 2.64[104] SOLDER POST, WITH MSL CONTACTS.

DATE: 01/00/79 DRAWING NO: A100779 Q=5536437

CUSTOMER DRAWING