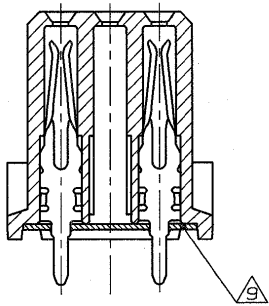
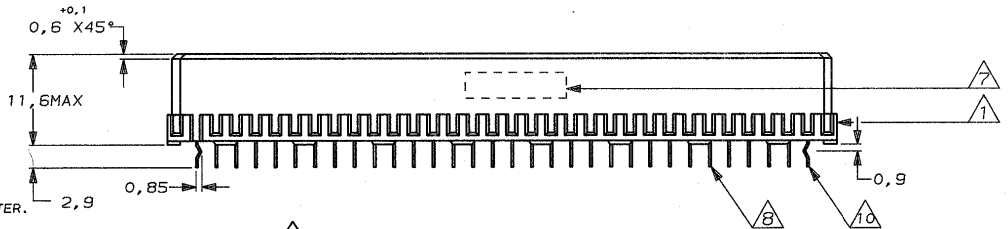
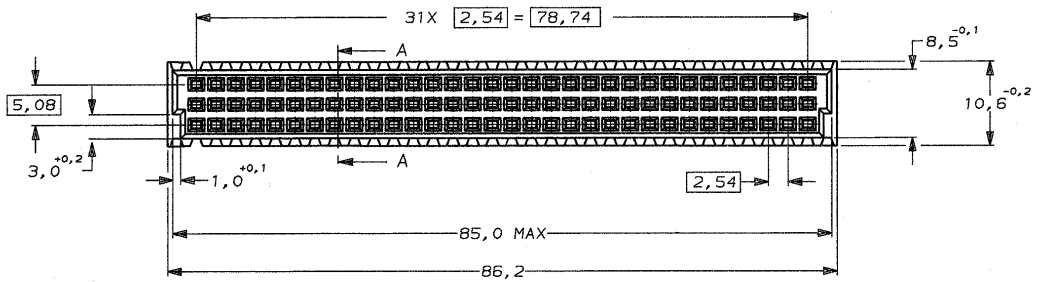


DO NOT SCALE
DIMENSIONS IN mm

METRIC



SECTION A-A



NOTES:

- 1 CONNECTOR MEETS THE REQUIREMENTS ACC. DIN 41612, PART 5.
- 2 MATERIAL CONTACT: PHOSPHORBRONZE. MATERIAL HOUSING: GLASSFILLED THERM. POLYESTER. COLOR: GREY.
- 3 AT CONTACT AREA 1,25 μm GOLD OVER 1,25 μm NICKEL AT SOLDER POST AREA 1,25 μm TIN-LEAD (93/7).
- 4 AT CONTACT AREA 0,8 μm GOLD OVER 1,25 μm NICKEL AT SOLDER POST AREA 1,25 μm TIN-LEAD (93/7).
- 5 CONTACT ARRANGEMENTS; AN ASTERISK "X" DENOTES A SIGNAL CONTACT. AN ASTERISK "⊗" DENOTES A KINKED SIGNAL CONTACT.
- 6 AT CONTACT AREA 0,4 μm GOLD OVER 1,25 μm NICKEL. AT SOLDER POST AREA 1,25 μm TIN LEAD (93/7).
- 7 CONNECTOR PRINTED WITH PARTNUMBER AND DATECODE ON OUTSIDE OF MATING AREA AT SIDE OF ROW c.
- 8 SOLDER POSTS SUITABLE FOR 1,0 NOM. P.C.B. HOLES.
- 9 FLUX RESISTANCE STRIP.
- 10 KINKED POSTS.
- 11 AT CONTACT AREA 0,1 μm GOLD OVER 0,7 μm PALLADIUM (DURAGOLD) OVER 1,25 μm NICKEL, AT SOLDERPOST AREA 1,25 μm TIN-LEAD (93/7).

c	b	a	5
⊗	⊗	⊗	1
X	X	X	2
X	X	X	3
X	X	X	4
X	X	X	5
X	X	X	6
X	X	X	7
X	X	X	8
X	X	X	9
X	X	X	10
X	X	X	11
X	X	X	12
X	X	X	13
X	X	X	14
X	X	X	15
X	X	X	16
X	X	X	17
X	X	X	18
X	X	X	19
X	X	X	20
X	X	X	21
X	X	X	22
X	X	X	23
X	X	X	24
X	X	X	25
X	X	X	26
X	X	X	27
X	X	X	28
X	X	X	29
X	X	X	30
X	X	X	31
⊗	⊗	⊗	32

WITH	WITHOUT	△	△	7-216202-4
WITH	WITH	△	△	6-216202-4
WITH	WITHOUT	△	△	1-216202-4
WITH	WITH	△	△	216202-8
WITH	WITH	△	△	216202-4
WITH	WITH	△	△	216202-1
△	△	FINISH	MATERIAL	PARTNUMBER
CUSTOMER DRAWING FOR REFERENCE ONLY WILL NOT BE UPDATED				
© COPYRIGHT 19- BY AMP-HOLLAND B.V. ALL INTERNATIONAL RIGHTS RESERVED. AMP PRODUCTS MAY BE COVERED BY U.S. AND FOREIGN AND/OR PATENTS PENDING.				
THIS DRAWING IS UNPUBLISHED RELEASED FOR PUBLICATION				
AMP AMP-HOLLAND B.V. 's-Hertogenbosch, The Netherlands.				
NAME 64 POS. C FEMALE B.T.B. CONN. ACC. DIN 41612 WITH SOLDER POSTS FOR 1,6mm. P.C. BOARD THK'S.				
LTR. REVISION RECORD		DR. CHK.	DATE	DWG. No.
DR. J.v.LIEMPT.	CHK. J. VAN DEN	APP. L.v. SOEST.	DATE 19 JUNE 1991	C-216202
DATE 19 JUNE 1991	DATE 12-2-93	DATE 14-3-93		REV. LTR. D
				SHEET 1 of 1
				A3