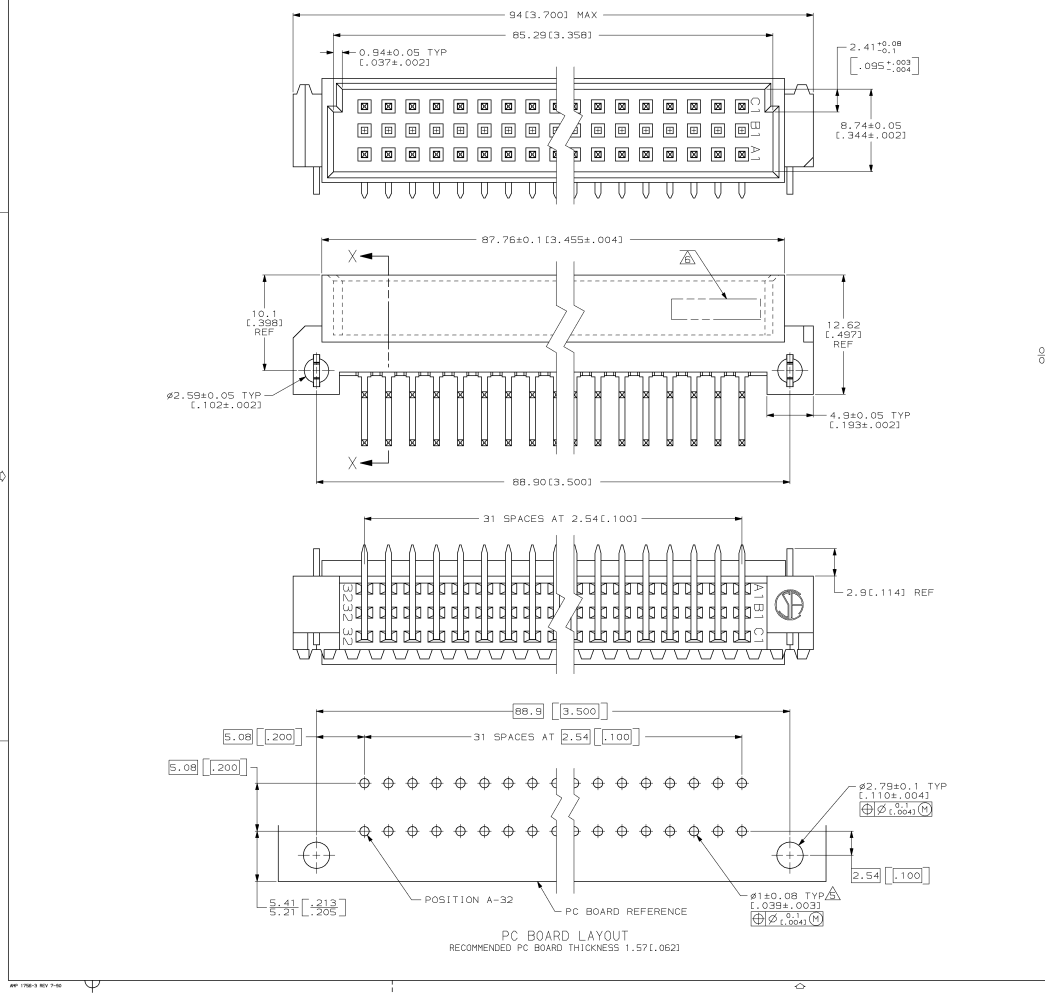
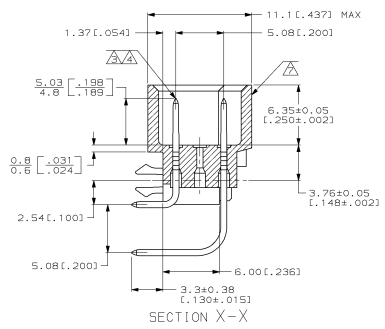


DRAWING MADE IN THIS WHOLE PROTECTION
THIS DRAWING IS UNPUBLISHED.
© Copyright 1982
RELEASED FOR PUBLICATION
BY AMP INCORPORATED. ALL INTERNATIONAL RIGHTS RESERVED.

REV. NO.		DATE	DESCRIPTION	DATE	APP.
AD	25			7/17/97	CR



- △ HOUSING MATERIAL, GLASS-FILLED POLYESTER. COLOR, GRAY.
- △ POST MATERIAL, BRASS.
- △ POST FINISH, DIN 41612 CLASS 2 IN CONTACT AREA. TIN-LEAD PLATE ON POSTS.
- △ POST FINISH, DIN 41612 CLASS 3 IN CONTACT AREA. TIN-LEAD PLATE ON POSTS.
- △ RECOMMENDED HOLE SIZE FOR MANUAL APPLICATION OF CONNECTOR ONTO PC BOARD.
- △ [PART NUMBER, DATE CODE] MARKED THIS APPROXIMATE AREA.
- △ MARKING ON THIS SIDE.



NOTES	POSITIONS LOADED	C	B	A	NO. OF LOADED POSITIONS	ASSY PART NUMBER
SUPERSEDED BY 536406-5	1-32	X	-	X	64	536406-9
	1-32	X	-	X	64	536406-5

DO NOT SCALE PRINT. UNLESS SPECIFIED DIMENSIONS IN mm (INCHES) TOLERANCES ON +		DR	DATE	AMP AMP Incorporated Harrisburg, PA 17105-3608	PART NO. PIN ASSEMBLY, EUROCARD, TYPE "C" WITH BOARD-LOCKS
1 P.L.C. DEC ± 0.131 (005) INCHES ±		L. BRINER	11/20/92		
MATERIAL		R. PATTERSON	12/11/92	NAME	
HSG: △ -		R. PATTERSON	12/11/92		
POST: △ -		APPROD		D.C. RUBENDALL	
FINISH		APPLICATION SPEC		SIZE	
POST: △ -		-		D	
WEIGHT		-		CAGE CODE	
-		-		00779	
-		-		DRAWING NO.	
-		-		536406	
-		-		SCALE	
-		-		5:1	
-		-		SHEET	
-		-		1 OF 1	

CUSTOMER DRAWING