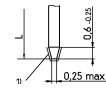


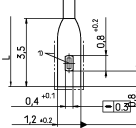
V42254-B7***-C9***

Termination Style

Solder/Wire-wrap pins



Solder lug



1) Cutting edges not plated
Terminations with galvanic Sn plating

L	A	B
3 -0.4	00	
2.9 ±0.3	01	
4.3 ±0.3	02	
13 ±0.5	40	
11 ±0.5	41	
17 ±0.5	42	
5.5 ±0.3	35	
10 -0.5		

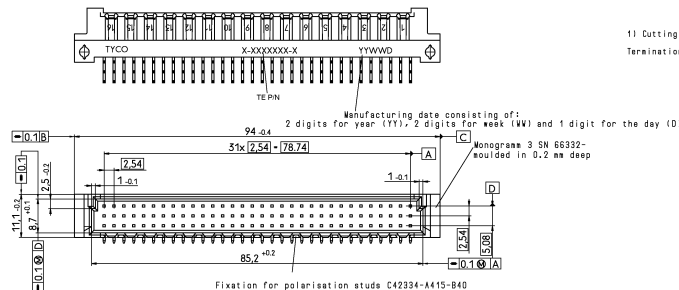
Contact assignment
0 every row every pitch
1 row a / every pitch
2 row a+b / every pitch
3 row a+c / every pitch
5 every row / every even pitch
6 row a / every even pitch
7 row a+b / every even pitch
8 row a+c / every even pitch

Version
1 with board locks for 1.6mm PCB
3 with standard preating *)
5 with board locks for 1.6mm PCB and with standard preating *)
6 basic version

*) First and last contact of each loaded row is a preating contact

Performance level	Noble metals	Plating thickness in reference area
Class I	Pd + Au or Au	1
	Au	4
Class II	Pd + Au or Au	2
	Au	5
Class III	Pd + Au or Au	3

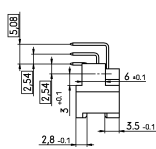
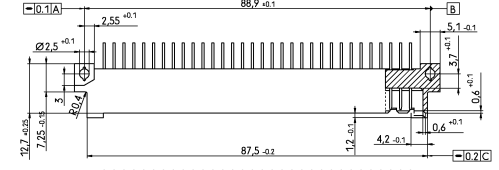
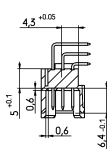
Nickel underlayer:
Protection film: HF-grease



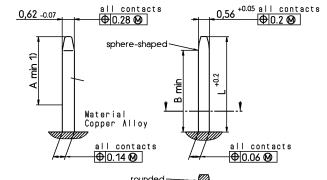
Manufacturing date consisting of:
2 digits for year (YY), 2 digits for week (WW) and 1 digit for the day (D)

Monogram 3 SN 66332-souided in 0.2 mm deep

Fixation for polarisation studs C42334-A415-B40

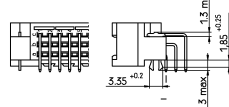


Contact: Dimensions, plating, material, preating



Reference area for plating thickness as used in table	L	A	B
normal contacts	4.8	3.5	4.2
pre-ating contacts	3.8	4.5	5.2

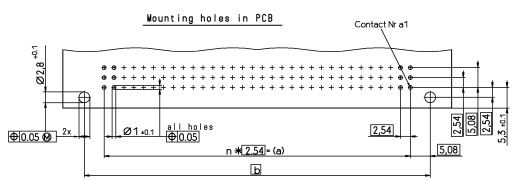
Male connector with board locks



Mounted in PC-boards of 1.5 to 1.8 mm
 $F_m \leq 50$ N
 $F_r \leq 20$ N, wenn soldered-in

Mounted in PC-boards over 1.8 mm
 $F_m \leq 60$ N
 $F_r \leq 18$ N

Inscription E 1,25-5 DIN 30640 souided in 0.2 mm deep
 Housing material: PBTP 30x glassfilled (UL94V-0) Pebble grey (similar RAL 7032)



TYPE	n	a	b
31	16	14	88.3

THIS INFORMATION IS CONFIDENTIAL AND PROPRIETARY TO TYCO ELECTRONICS CORPORATION AND ITS WORLDWIDE SUBSIDIARIES AND AFFILIATES. IT MAY NOT BE DISCLOSED TO ANYONE, OTHER THAN TYCO ELECTRONICS CORPORATION, WITHOUT WRITTEN AUTHORIZATION FROM TYCO ELECTRONICS CORPORATION, HARRISBURG, PENNSYLVANIA USA.

DATE	11/01/01	SCALE	1:1	WEDDF
DESIGNER	NAME	Customer	PIN Assembly Eurocard Type C	
DATE	11/01/01	SCALE	1:1	WEDDF
DESIGNER	NAME	Customer	Coding version with pre-centering	
DATE	11/01/01	SCALE	1:1	WEDDF
DESIGNER	NAME	Customer	V42254-B7***-C9***-7425	
DATE	11/01/01	SCALE	1:1	WEDDF
DESIGNER	NAME	Customer	C9-393464-3	

PROPRIETARY: THIS INFORMATION IS CONFIDENTIAL AND PROPRIETARY TO TYCO ELECTRONICS CORPORATION AND ITS WORLDWIDE SUBSIDIARIES AND AFFILIATES. IT MAY NOT BE DISCLOSED TO ANYONE OTHER THAN TYCO ELECTRONICS PERSONNEL WITHOUT WRITTEN AUTHORIZATION FROM TYCO ELECTRONICS CORPORATION, HARRISBURG, PENNSYLVANIA, USA.

Old Part Number	TE Part Number	Style & Number of Positions	Termination posts	Loaded Rows	Standard Pre-Mating (1mm 1)	Performance Level	Board Locks
V42254-B7100-C930	8-1393646-8	C96	right-angle solder leads	every row , every pitch	Yes	1	No
V42254-B7100-C933	8-1393646-9	C96	right-angle solder leads	row a+c , every pitch	Yes	1	No
V42254-B7100-C938	9-1393646-0	C96	right-angle solder leads	row a+c , every even pitch	Yes	1	No
V42254-B7200-C930	9-1393646-3	C96	right-angle solder leads	every row , every pitch	Yes	2	No
V42254-B7200-C933	9-1393646-4	C96	right-angle solder leads	row a+c , every pitch	Yes	2	No
V42254-B7200-C935	9-1393646-5	C96	right-angle solder leads	every row , every even pitch	Yes	2	No
V42254-B7200-C950	9-1393646-6	C96	right-angle solder leads	every row , every pitch	Yes	2	Yes
V42254-B7200-C953	9-1393646-7	C96	right-angle solder leads	row a+c , every pitch	Yes	2	Yes

OBSOLETE

OBSOLETE

1) First and last contact of each loaded row is a pre-mating (make first / break last) contact.

Active part numbers.
Contact Tyco Electronics for other configuration availability

		TYCO ELECTRONICS CORPORATION OOSTKAMP - BELGIUM	SCALE WEIGHT
DATE 11.01.96 NAME Cuvelier DEP. PD.COM		DIMENSIONS IN MM Loc GW	MATERIAL PART NAME PIN Assembly Eurocard Type C Coding version with pre-centering
C2 see page 1 REV. CHANGE ORDER DATE APP.		TOLERANCE UNLESS SPECIFIED OTHERWISE	PART NO. V42254-B7***-C9***-7626
Customer Drawing Nr. C 9-1393646-3		SHT. 2- OF 2	