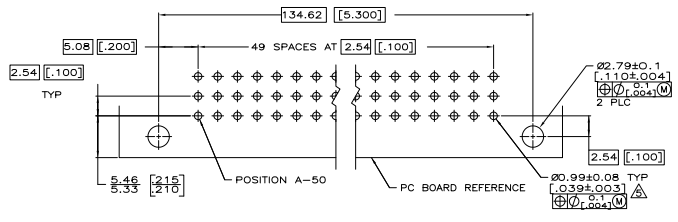
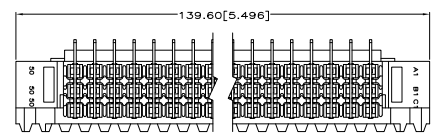
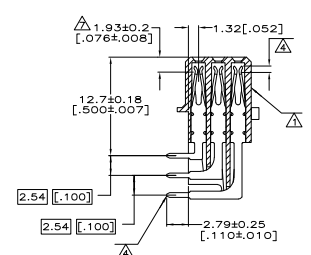
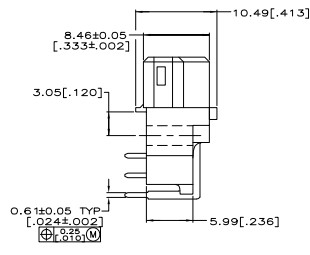
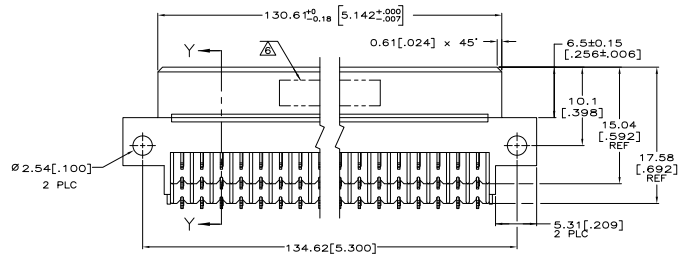
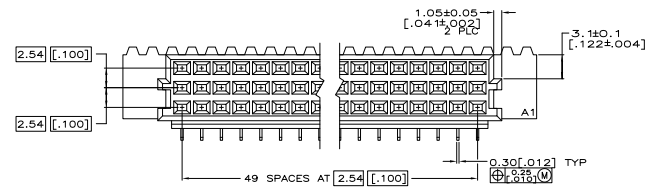


| REV | DATE | DESCRIPTION | BY | CHK | APP |
|-----|------|-----------------------------|--------|-----|-----|
| AD | 25 | RELEASE PER EC 0512-0082-05 | DMANNS | JDF | JMS |

- △ MARKING ON THIS SIDE.
- △ HOUSING MATERIAL: GLASS-FILLED POLYMER.
- △ CONTACT MATERIAL: COPPER ALLOY.
- △ CONTACT FINISH: DIN 41612 CLASS 2 IN CONTACT AREA. TIN PLATE ON POSTS.
- △ RECOMMENDED HOLE SIZE FOR MANUAL APPLICATION OF CONNECTOR ONTO PC BOARD.
- △ PART NUMBER, DATE CODE IDENTIFICATION, CSA LOGO, THIS APPROXIMATE AREA.
- △ CONTACT POINT.



PC BOARD LAYOUT

| | | | | | |
|------------------|------|--------|----------|--------|------------------|
| 1 THRU 50 | X | X | X | 150 | 5650875-5 |
| POSITIONS LOADED | C | S | A | LOADED | ASSY PART NUMBER |
| | ROWS | LOADED | POSITION | | |

THIS DRAWING IS A CONTROLLED DOCUMENT. DRAWING NO. 5650875-5. REV. 1. DATE 05/12/05. CUSTOMER DRAWING.

ASSEMBLY: RECEPTACLE, EUROCARD, TYPE R, LEAD-FREE, 150 POSITION, 2.78 (110) SOLDER POSTS.