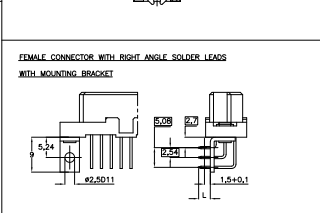
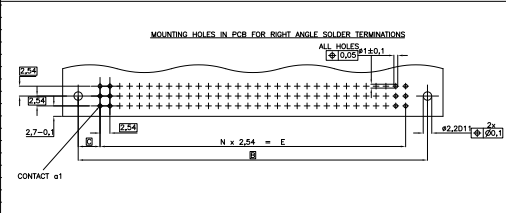
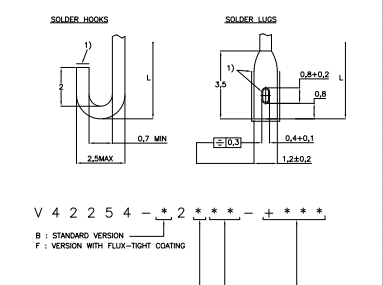
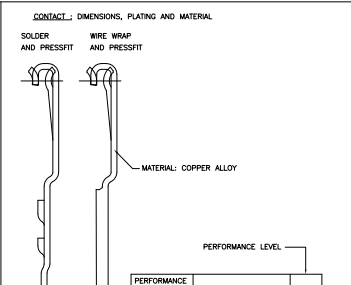
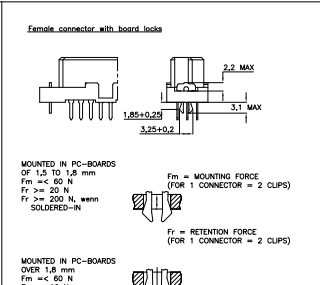
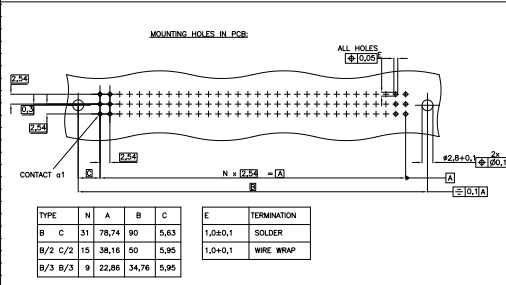


REV	DATE	DESCRIPTION	BY	CHK	APP
B6	08-01-2253				AEG/MKO
B7	08-08-012252				AEG/MKO
B8	10-02-0255				SMARVO/RV/MKO

SOLDER TERMINATIONS		TERMINATION STYLES		CODE
	SOLDER	L	2.9±0.3	01
	SOLDER	L	3.7±0.3	02
	SOLDER	L	4.5±0.3	03
	SOLDER	L	7.3±0.3	04
	WIRE WRAP	L	13±0.5	40
	SOLDER	L	5.5±0.3	30
	SOLDER HOOKS	L	10±0.5	35
	SOLDER HOOKS	L	5.5±0.3	30
	SOLDER LUGS	L	1.55-0.4	00
	SOLDER LUGS	L	3-0.4	10
	WITH MOUNTING BRACKET	L	13±0.5	60
	WITH MOUNTING BRACKET	L	17±0.5	61
	WITH MOUNTING BRACKET	L	4±0.5	63
	WITH MOUNTING BRACKET	L	13±0.5	64
	WITH MOUNTING BRACKET	L	17±0.5	65
	WITH MOUNTING BRACKET	L	6±0.5	67
	WITH MOUNTING BRACKET	L	6±0.5	70



THIS DRAWING IS A CONTROLLED DOCUMENT.

DATE	BY	CHK	APP

Customer Drawing: A1 00779 (G=1393640-1)

REVISIONS: 1, 2, BR

THIS DRAWING IS UNCLASSIFIED UNLESS INDICATED OTHERWISE

REVISIONS FOR INFORMATION

DATE BY DESCRIPTION

REV	DATE	DESCRIPTION	BY	APP
1		ISSUE		
2		SEE SHEET 1		

PRODUCT IDENTIFICATION CODE	TE / PIN	TYPE & NUMBER OF CONTACTS	TERMINATION CODES	LOADED RANGE	PERFORMANCE LEVEL	RAWD LOGS
V42254-R2100-C960	1393640-1	C96	RIGHT-ANGLE SOLDER LEADS	EVERY ROW, EVERY PITCH	1	NO
V42254-R2101-B640	1393640-4	B64	2.0mm STRAIGHT SOLDER LEADS	EVERY ROW, EVERY PITCH	1	NO
V42254-R2101-B845	1393640-5	B84	2.0mm STRAIGHT SOLDER LEADS	EVERY ROW, EVERY EVEN PITCH	1	NO
V42254-R2101-C300	1393640-6	C30	2.0mm STRAIGHT SOLDER LEADS	EVERY ROW, EVERY PITCH	1	NO
V42254-R2101-C480	1393640-7	C48	2.0mm STRAIGHT SOLDER LEADS	EVERY ROW, EVERY PITCH	1	NO
V42254-R2101-C483	1393640-8	C48	2.0mm STRAIGHT SOLDER LEADS	ROW A+C, EVERY PITCH	1	NO
V42254-R2101-C910	1393640-9	C96	2.0mm STRAIGHT SOLDER LEADS	EVERY ROW, EVERY PITCH	1	YES
V42254-R2101-C980	1393640-9	C96	2.0mm STRAIGHT SOLDER LEADS	ROW A+C, EVERY PITCH	1	NO
V42254-R2101-C983	1393640-9	C96	2.0mm STRAIGHT SOLDER LEADS	EVERY ROW, EVERY PITCH	1	NO
V42254-R2102-B320	1-1393640-6	B32	4.5mm STRAIGHT SOLDER LEADS	EVERY ROW, EVERY PITCH	1	NO
V42254-R2102-B323	1-1393640-6	B32	4.5mm STRAIGHT SOLDER LEADS	EVERY ROW, EVERY PITCH	1	NO
V42254-R2102-C303	1-1393640-4	C30	4.5mm STRAIGHT SOLDER LEADS	EVERY ROW, EVERY PITCH	1	NO
V42254-R2102-C360	1-1393640-4	C36	4.5mm STRAIGHT SOLDER LEADS	EVERY ROW, EVERY PITCH	1	NO
V42254-R2102-C363	1-1393640-4	C36	4.5mm STRAIGHT SOLDER LEADS	ROW A+C, EVERY PITCH	1	NO
V42254-R2102-B640	1-1393640-7	B64	4.5mm STRAIGHT SOLDER LEADS	EVERY ROW, EVERY PITCH	1	NO
V42254-R2102-B644	1-1393640-8	B64	4.5mm STRAIGHT SOLDER LEADS	ROW A, EVERY PITCH	1	NO
V42254-R2102-B845	1-1393640-8	B84	4.5mm STRAIGHT SOLDER LEADS	EVERY ROW, EVERY PITCH	1	NO
V42254-R2102-C480	1-1393640-4	C48	4.5mm STRAIGHT SOLDER LEADS	EVERY ROW, EVERY PITCH	1	NO
V42254-R2102-C910	1-1393640-3	C96	4.5mm STRAIGHT SOLDER LEADS	EVERY ROW, EVERY PITCH	1	YES
V42254-R2103-B840	1-1393640-3	B84	4.5mm STRAIGHT SOLDER LEADS	EVERY ROW, EVERY PITCH	1	NO
V42254-R2103-C960	1-1393640-4	C96	4.5mm STRAIGHT SOLDER LEADS	EVERY ROW, EVERY PITCH	1	NO
V42254-R2103-C963	1-1393640-4	C96	4.5mm STRAIGHT SOLDER LEADS	ROW A+C, EVERY EVEN PITCH	1	NO
V42254-R2103-C980	1-1393640-4	C96	4.5mm STRAIGHT SOLDER LEADS	EVERY ROW, EVERY PITCH	1	NO
V42254-R2103-C983	1-1393640-4	C96	4.5mm STRAIGHT SOLDER LEADS	ROW A+C, EVERY PITCH	1	NO
V42254-R2103-C985	1-1393640-4	C96	4.5mm STRAIGHT SOLDER LEADS	EVERY ROW, EVERY PITCH	1	NO
V42254-R2103-C986	1-1393640-4	C96	4.5mm STRAIGHT SOLDER LEADS	EVERY ROW, EVERY PITCH	1	NO
V42254-R2104-C960	1-1393640-5	C96	7.5mm STRAIGHT SOLDER LEADS	EVERY ROW, EVERY PITCH	1	NO
V42254-R2110-B840	1-1393640-7	B84	RIGHT-ANGLE SOLDER LEADS WITH MOUNTING BRACKET	EVERY ROW, EVERY PITCH	1	NO
V42254-R2110-C960	1-1393640-8	C96	RIGHT-ANGLE SOLDER LEADS WITH MOUNTING BRACKET	EVERY ROW, EVERY PITCH	1	NO
V42254-R2110-C963	1-1393640-9	C96	RIGHT-ANGLE SOLDER LEADS WITH MOUNTING BRACKET	ROW A+C, EVERY PITCH	1	NO
V42254-R2110-C980	1-1393640-9	C96	RIGHT-ANGLE SOLDER LEADS WITH MOUNTING BRACKET	EVERY ROW, EVERY PITCH	1	NO
V42254-R2110-C983	1-1393640-9	C96	RIGHT-ANGLE SOLDER LEADS WITH MOUNTING BRACKET	ROW A+C, EVERY PITCH	1	NO
V42254-R2130-B841	4-1393640-6	B84	5.5 10mm SOLDER HOOKS	ROW A, EVERY PITCH	1	NO
V42254-R2135-B840	4-1393640-7	B84	5.5 10mm SOLDER HOOKS	EVERY ROW, EVERY PITCH	1	NO
V42254-R2135-B841	4-1393640-7	B84	5.5 10mm SOLDER HOOKS	ROW A, EVERY PITCH	1	NO
V42254-R2135-C963	5-1393640-1	C96	5.5 10mm SOLDER LUGS	EVERY ROW, EVERY PITCH	1	NO
V42254-R2140-B840	6-1393640-7	B84	13mm STRAIGHT WIRE-WRAP PINS	EVERY ROW, EVERY PITCH	1	NO
V42254-R2140-C960	6-1393640-8	C96	13mm STRAIGHT WIRE-WRAP PINS	EVERY ROW, EVERY PITCH	1	NO
V42254-R2140-C963	6-1393640-8	C96	13mm STRAIGHT WIRE-WRAP PINS	ROW A+C, EVERY PITCH	1	NO
V42254-R2200-C960	7-1393640-0	C96	RIGHT-ANGLE SOLDER LEADS	EVERY ROW, EVERY PITCH	2	NO
V42254-R2200-C963	7-1393640-1	C96	RIGHT-ANGLE SOLDER LEADS	ROW A+C, EVERY PITCH	2	NO
V42254-R2201-B200	7-1393640-2	B20	2.0mm STRAIGHT SOLDER LEADS	EVERY ROW, EVERY PITCH	2	NO
V42254-R2201-B320	7-1393640-3	B32	2.0mm STRAIGHT SOLDER LEADS	EVERY ROW, EVERY PITCH	2	YES
V42254-R2201-B323	7-1393640-4	B32	2.0mm STRAIGHT SOLDER LEADS	EVERY ROW, EVERY PITCH	2	NO
V42254-R2201-B480	7-1393640-5	B48	2.0mm STRAIGHT SOLDER LEADS	EVERY ROW, EVERY PITCH	2	NO
V42254-R2201-B841	7-1393640-6	B84	2.0mm STRAIGHT SOLDER LEADS	ROW A, EVERY PITCH	2	NO
V42254-R2201-C300	8-1393640-0	C30	2.0mm STRAIGHT SOLDER LEADS	EVERY ROW, EVERY PITCH	2	NO
V42254-R2201-C313	8-1393640-2	C30	2.0mm STRAIGHT SOLDER LEADS	ROW A+C, EVERY PITCH	2	YES
V42254-R2201-C410	8-1393640-3	C48	2.0mm STRAIGHT SOLDER LEADS	EVERY ROW, EVERY PITCH	2	YES
V42254-R2201-C413	8-1393640-4	C48	2.0mm STRAIGHT SOLDER LEADS	EVERY ROW, EVERY PITCH	2	YES
V42254-R2201-C480	8-1393640-5	C48	2.0mm STRAIGHT SOLDER LEADS	EVERY ROW, EVERY PITCH	2	NO
V42254-R2201-C483	8-1393640-6	C48	2.0mm STRAIGHT SOLDER LEADS	ROW A+C, EVERY PITCH	2	NO
V42254-R2201-C913	9-1393640-0	C96	2.0mm STRAIGHT SOLDER LEADS	EVERY ROW, EVERY PITCH	2	YES
V42254-R2201-C985	9-1393640-1	C96	2.0mm STRAIGHT SOLDER LEADS	ROW A+C, EVERY PITCH	2	NO
V42254-R2201-C986	9-1393640-1	C96	2.0mm STRAIGHT SOLDER LEADS	EVERY ROW, EVERY PITCH	2	NO
V42254-R2202-B320	1-1393641-0	B32	4.5mm STRAIGHT SOLDER LEADS	EVERY ROW, EVERY PITCH	2	NO
V42254-R2202-B323	1-1393641-1	B32	4.5mm STRAIGHT SOLDER LEADS	ROW A, EVERY PITCH	2	NO
V42254-R2202-B640	1-1393641-4	B64	4.5mm STRAIGHT SOLDER LEADS	EVERY ROW, EVERY PITCH	2	NO
V42254-R2202-B840	1-1393641-5	B84	4.5mm STRAIGHT SOLDER LEADS	EVERY ROW, EVERY PITCH	2	NO
V42254-R2202-B841	1-1393641-6	B84	4.5mm STRAIGHT SOLDER LEADS	ROW A, EVERY PITCH	2	NO
V42254-R2202-B841N	1-1393641-7	B84	4.5mm STRAIGHT SOLDER LEADS	ROW A, EVERY PITCH	2	NO
V42254-R2202-B845	1-1393641-8	B84	4.5mm STRAIGHT SOLDER LEADS	EVERY ROW, EVERY PITCH	2	NO

PRODUCT IDENTIFICATION CODE	TE / PIN	TYPE & NUMBER OF CONTACTS	TERMINATION CODES	LOADED RANGE	PERFORMANCE LEVEL	RAWD LOGS
V42254-R2202-C300	2-1393641-0	C30	4.5mm STRAIGHT SOLDER LEADS	EVERY ROW, EVERY PITCH	2	NO
V42254-R2202-C303	2-1393641-1	C30	4.5mm STRAIGHT SOLDER LEADS	ROW A+C, EVERY PITCH	2	NO
V42254-R2202-C310	2-1393641-2	C30	4.5mm STRAIGHT SOLDER LEADS	EVERY ROW, EVERY PITCH	2	YES
V42254-R2202-C410	2-1393641-3	C48	4.5mm STRAIGHT SOLDER LEADS	EVERY ROW, EVERY PITCH	2	NO
V42254-R2202-C413	2-1393641-4	C48	4.5mm STRAIGHT SOLDER LEADS	ROW A+C, EVERY PITCH	2	YES
V42254-R2202-C480	2-1393641-5	C48	4.5mm STRAIGHT SOLDER LEADS	EVERY ROW, EVERY PITCH	2	NO
V42254-R2202-C483	2-1393641-6	C48	4.5mm STRAIGHT SOLDER LEADS	ROW A+C, EVERY PITCH	2	NO
V42254-R2202-C910	2-1393641-7	C96	4.5mm STRAIGHT SOLDER LEADS	EVERY ROW, EVERY PITCH	2	YES
V42254-R2202-C913	2-1393641-8	C96	4.5mm STRAIGHT SOLDER LEADS	ROW A+C, EVERY PITCH	2	YES
V42254-R2202-C918	3-1393641-0	C96	4.5mm STRAIGHT SOLDER LEADS	EVERY ROW, EVERY PITCH	2	NO
V42254-R2202-C960	3-1393641-1	C96	4.5mm STRAIGHT SOLDER LEADS	EVERY ROW, EVERY PITCH	2	NO
V42254-R2202-C960B	3-1393641-2	C96	4.5mm STRAIGHT SOLDER LEADS	EVERY ROW, EVERY PITCH	2	NO
V42254-R2202-C960N	3-1393641-3	C96	4.5mm STRAIGHT SOLDER LEADS	EVERY ROW, EVERY PITCH	2	NO
V42254-R2202-C963	3-1393641-5	C96	4.5mm STRAIGHT SOLDER LEADS	ROW A+C, EVERY PITCH	2	NO
V42254-R2202-C963B	3-1393641-6	C96	4.5mm STRAIGHT SOLDER LEADS	ROW A+C, EVERY PITCH	2	NO
V42254-R2202-C963N	3-1393641-7	C96	4.5mm STRAIGHT SOLDER LEADS	ROW A+C, EVERY PITCH	2	NO
V42254-R2202-C965	3-1393641-8	C96	4.5mm STRAIGHT SOLDER LEADS	EVERY ROW, EVERY EVEN PITCH	2	NO
V42254-R2202-C968	3-1393641-9	C96	4.5mm STRAIGHT SOLDER LEADS	ROW A+C, EVERY EVEN PITCH	2	NO
V42254-R2202-C988N	4-1393641-0	C96	4.5mm STRAIGHT SOLDER LEADS	ROW A+C, EVERY EVEN PITCH	2	NO
V42254-R2204-B640	6-1393641-7	B64	7.5mm STRAIGHT SOLDER LEADS	EVERY ROW, EVERY PITCH	2	NO
V42254-R2204-C960	6-1393641-8	C96	7.5mm STRAIGHT SOLDER LEADS	EVERY ROW, EVERY PITCH	2	NO
V42254-R2204-C963	6-1393641-9	C96	7.5mm STRAIGHT SOLDER LEADS	ROW A+C, EVERY PITCH	2	NO
V42254-R2205-C960	7-1393641-0	C96	3.7mm STRAIGHT SOLDER LEADS	EVERY ROW, EVERY PITCH	2	NO
V42254-R2210-B330	7-1393641-2	B32	RIGHT-ANGLE SOLDER LEADS WITH MOUNTING BRACKET	EVERY ROW, EVERY PITCH	2	NO
V42254-R2210-C483	7-1393641-8	C48	RIGHT-ANGLE SOLDER LEADS WITH MOUNTING BRACKET	ROW A+C, EVERY PITCH	2	NO
V42254-R2210-C960	7-1393641-7	C96	RIGHT-ANGLE SOLDER LEADS WITH MOUNTING BRACKET	EVERY ROW, EVERY PITCH	2	NO
V42254-R2210-C963	7-1393641-8	C96	RIGHT-ANGLE SOLDER LEADS WITH MOUNTING BRACKET	ROW A+C, EVERY PITCH	2	NO
V42254-R2210-C983	7-1393641-9	C96	RIGHT-ANGLE SOLDER LEADS WITH MOUNTING BRACKET	EVERY ROW, EVERY PITCH	2	NO
V42254-R2220-C960	8-1393641-5	C96	5.5 10mm SOLDER HOOKS	EVERY ROW, EVERY PITCH	2	NO
V42254-R2230-C963	8-1393641-6	C96	5.5 10mm SOLDER HOOKS	ROW A+C, EVERY PITCH	2	NO
V42254-R2230-C965	8-1393641-7	C96	5.5 10mm SOLDER HOOKS	EVERY ROW, EVERY PITCH	2	NO
V42254-R2235-C483	9-1393641-1	C48	5.5 10mm SOLDER LUGS	ROW A+C, EVERY PITCH	2	NO
V42254-R2235-C980	9-1393641-3	C96	5.5 10mm SOLDER LUGS	EVERY ROW, EVERY PITCH	2	NO
V42254-R2235-C983	9-1393641-4	C96	5.5 10mm SOLDER LUGS	ROW A+C, EVERY PITCH	2	NO
V42254-R2235-C985	9-1393641-5	C96	5.5 10mm SOLDER LUGS	EVERY ROW, EVERY PITCH	2	NO
V42254-R2235-C988	9-1393641-6	C96	5.5 10mm SOLDER LUGS	ROW A+C, EVERY EVEN PITCH	2	NO
V42254-R2240-B320	9-1393641-1	B20	13mm STRAIGHT WIRE-WRAP PINS	EVERY ROW, EVERY PITCH	2	NO
V42254-R2240-B330	9-1393641-2	B32	13mm STRAIGHT WIRE-WRAP PINS	EVERY ROW, EVERY PITCH	2	NO
V42254-R2240-B640	9-1393641-3	B64	13mm STRAIGHT WIRE-WRAP PINS	EVERY ROW, EVERY PITCH	2	NO
V42254-R2240-B640N	9-1393641-4	B64	13mm STRAIGHT WIRE-WRAP PINS	EVERY ROW, EVERY PITCH	2	NO
V42254-R2240-C300	9-1393641-7	C30	13mm STRAIGHT WIRE-WRAP PINS	EVERY ROW, EVERY PITCH	2	NO
V42254-R2240-C303	9-1393641-8	C30	13mm STRAIGHT WIRE-WRAP PINS	ROW A+C, EVERY PITCH	2	NO
V42254-R2240-C480	9-1393641-9	C48	13mm STRAIGHT WIRE-WRAP PINS	EVERY ROW, EVERY PITCH	2	NO
V42254-R2240-C483	1-1393642-3	C48	13mm STRAIGHT WIRE-WRAP PINS	ROW A+C, EVERY PITCH	2	NO
V42254-R2240-C960	1-1393642-1	C96	13mm STRAIGHT WIRE-WRAP PINS	EVERY ROW, EVERY PITCH	2	NO
V42254-R2240-C960B	1-1393642-2	C96	13mm STRAIGHT WIRE-WRAP PINS	EVERY ROW, EVERY PITCH	2	NO
V42254-R2240-C960N	1-1393642-3	C96	13mm STRAIGHT WIRE-WRAP PINS	EVERY ROW, EVERY PITCH	2	NO
V42254-R2240-C981B	1-1393642-4	C96	13mm STRAIGHT WIRE-WRAP PINS	ROW A, EVERY PITCH	2	NO
V42254-R2240-C982	1-1393642-5	C96	13mm STRAIGHT WIRE-WRAP PINS	ROW A+B, EVERY PITCH	2	NO
V42254-R2240-C983	1-1393642-6	C96	13mm STRAIGHT WIRE-WRAP PINS	ROW A+C, EVERY PITCH	2	NO
V42254-R2240-C981B	1-1393642-7	C96	13mm STRAIGHT WIRE-WRAP PINS	ROW A+C, EVERY PITCH	2	NO
V42254-R2240-C985	1-1393642-8	C96	13mm STRAIGHT WIRE-WRAP PINS	EVERY ROW, EVERY PITCH	2	NO
V42254-R2240-C988	1-1393642-9	C96	13mm STRAIGHT WIRE-WRAP PINS	ROW A+C, EVERY EVEN PITCH	2	NO
V42254-R2302-C913	6-1393642-7	C96	4.5mm STRAIGHT SOLDER LEADS	ROW A+C, EVERY PITCH	3	YES
V42254-R2302-C960	6-1393642-8	B64	4.5mm STRAIGHT SOLDER LEADS	EVERY ROW, EVERY PITCH	3	NO
V42254-R2302-C963	6-1393642-9	C96	4.5mm STRAIGHT SOLDER LEADS	ROW A+C, EVERY PITCH	3	NO
V42254-R2302-C983	6-1393642-9	C96	4.5mm STRAIGHT SOLDER LEADS	EVERY ROW, EVERY PITCH	3	NO
V42254-R2302-C985	6-1393642-9	C96	4.5mm STRAIGHT SOLDER LEADS	EVERY ROW, EVERY PITCH	3	NO
V42254-F2101-B640	9-1393642-0	B64	4.5mm STRAIGHT SOLDER LEADS	EVERY ROW, EVERY PITCH	1	NO
V42254-F2101-C310	9-1393642-1	C30	2.0mm STRAIGHT SOLDER LEADS	EVERY ROW, EVERY PITCH	2	YES
V42254-F2101-C480	9-1393642-3	C48	2.0mm STRAIGHT SOLDER LEADS	EVERY ROW, EVERY PITCH	2	NO
V42254-F2201-C910	9-1393642-4	C96	2.0mm STRA			