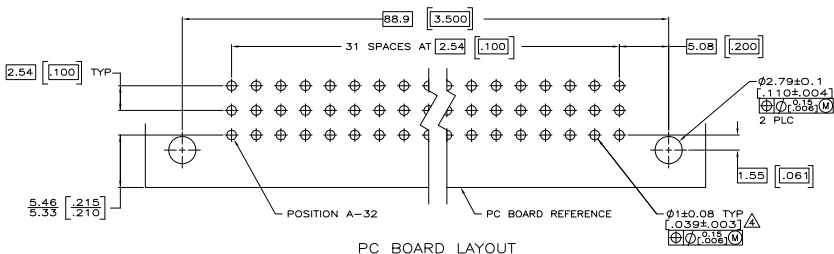
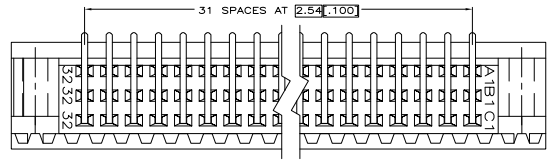
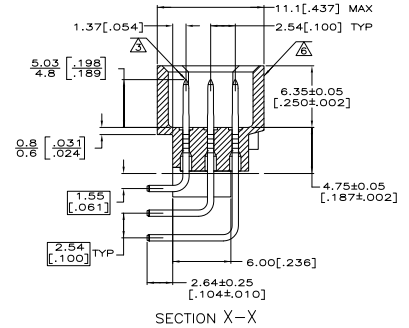
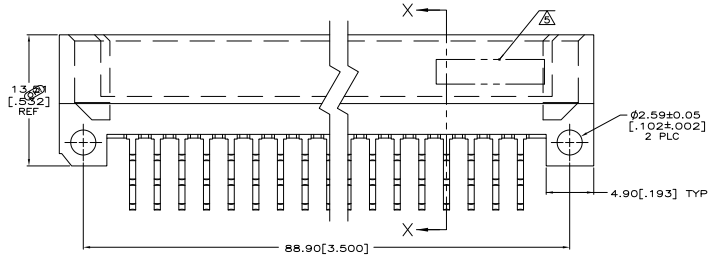
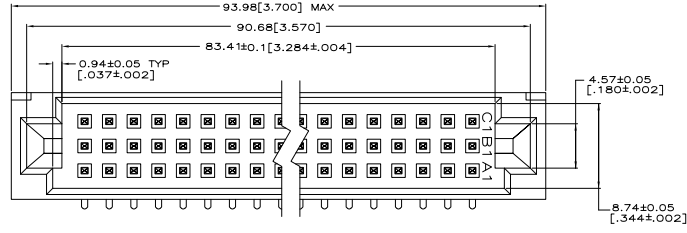


REV	DATE	DESCRIPTION	BY	CHK	APP
AD 00					
01		REV PER ESD-07-001987			CBM#2007 BC AS



- △ HOUSING MATERIAL: GLASS-FILLED POLYMER.
- △ POST MATERIAL: COPPER ALLOY.
- △ POST FINISH: DIN 41612 CLASS 2 IN CONTACT AREA. TIN PLATE ON POSTS.
- △ RECOMMENDED HOLE SIZE FOR MANUAL APPLICATION OF CONNECTOR ONTO PC BOARD.
- △ [PART NUMBER, DATE CODE] MARKED THIS APPROXIMATE AREA.
- △ MARKING ON THIS SIDE.

5148003-5
PART NO.

THIS DRAWING IS A CONTROLLED DOCUMENT.		REV	DATE	DESCRIPTION	BY	CHK	APP
INCHES	MILLIMETERS	AD	00				
1" = 25.4mm	1:1						
DATE	SIZE	REV	DATE	DESCRIPTION	BY	CHK	APP
01/07/05	A1	00	07/07/05	ASSEMBLY, PIN, EUROCARD, TYPE C, 96 POSITION, 2.64(.104) SOLDER POST WITH GUIDE FEATURES.			
DATE	SIZE	REV	DATE	DESCRIPTION	BY	CHK	APP
01/07/05	A1	00	07/07/05	ASSEMBLY, PIN, EUROCARD, TYPE C, 96 POSITION, 2.64(.104) SOLDER POST WITH GUIDE FEATURES.			
DATE	SIZE	REV	DATE	DESCRIPTION	BY	CHK	APP
01/07/05	A1	00	07/07/05	ASSEMBLY, PIN, EUROCARD, TYPE C, 96 POSITION, 2.64(.104) SOLDER POST WITH GUIDE FEATURES.			