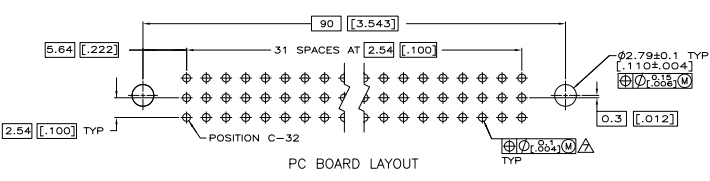
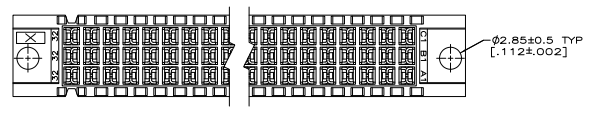
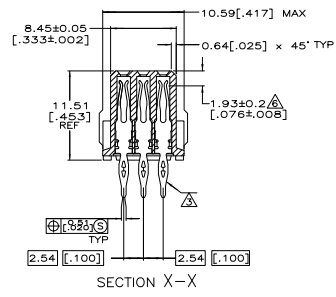
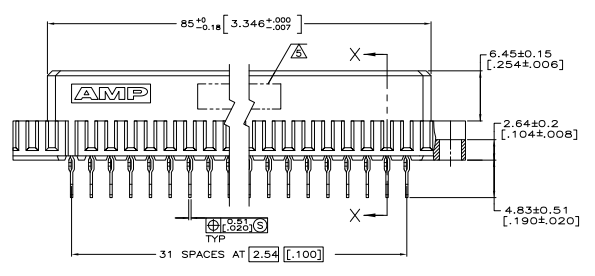
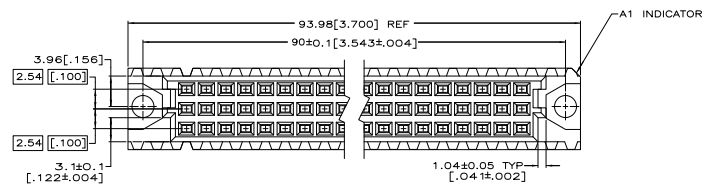


THIS DRAWING IS UNPUBLISHED
 ALL RIGHTS RESERVED

REV	DATE	DESCRIPTION	BY	CHK	APP
AD	25	REVISED PER EDD-11-004835			

- △ HOUSING MATERIAL: GLASS-FILLED POLYMER. COLOR: GRAY.
- △ CONTACT MATERIAL: COPPER ALLOY.
- △ CONTACT FINISH: DIN 41612 CLASS 2 IN CONTACT AREA. TIN PLATE ON POSTS.
- △ CONTACT FINISH: DIN 41612 CLASS 3 IN CONTACT AREA. TIN PLATE ON POSTS.
- △ PART NUMBER, DATE CODE IDENTIFICATION, CSA LOGO IN THIS APPROXIMATE AREA. POINT OF MEASUREMENT FOR FINISH.
- △ ACTION PIN POSTS REQUIRE 1.57[.062] MINIMUM THICK PC BOARD. RECOMMENDED PC BOARD HOLES ARE 1.51 ± 0.2 [.0453 ± .001] DRILLED HOLE WITH 0.02-0.07 [.001-.003] COPPER AND 0.008 [.0003] MINIMUM TIN-LEAD PLATING. FINISHED HOLE AFTER PLATING, $0.94-1.09$ [.037-.043].



FINISH	POSITIONS LOADED	C	B	A	ROWS LOADED	POSITION	ASSY PART NUMBER
△	1 THRU 32	X	X	X	X	96	5535032-9
△	1 THRU 32	X	X	X	X	96	5535032-5
△	1 THRU 32	X	X	X	X	96	5535032-4

THIS DRAWING IS A CONTROLLED DOCUMENT.

TE Connectivity

ASSEMBLY: RECEPTACLE, EUROCARD, TYPE C, LEAD-FREE, 96 POSITION, 4.83(190) TOUCHLESS, PRESS-FIT

DATE: 00779 (G) 5535032

CUSTOMER DRAWING