

Female Style 1/2 R High Temperature

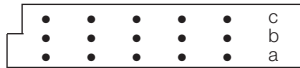
Series 8577 – 3 rows (3 x 16) Inverted



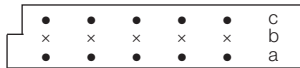
Contact Design and Termination Length	Number of Contacts	Loading Description	Part Number Performance classes according to DIN 41612	
			II	I
0.6 x 0.6 mm Post Profile 3.0 mm (Y) Right Angled	48	a + b + c fully loaded	20 8577 048 002 025	20 8577 048 002 049
	32	a + c fully loaded	20 8577 048 002 026	20 8577 048 002 050
	16	a + c even loading	20 8577 048 002 033	20 8577 048 002 057
	16	a loading only	20 8577 048 002 027	20 8577 048 002 051

NB: Alternative Prefix Variations Available: 26, please refer to Page 10.
 Additional Plating & Loading Variations: Please contact your local AVX sales office or distributor.

LOADING DESCRIPTION



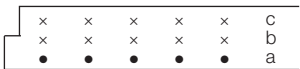
48 contacts, rows a + b + c fully loaded



32 contacts, rows a + c fully loaded

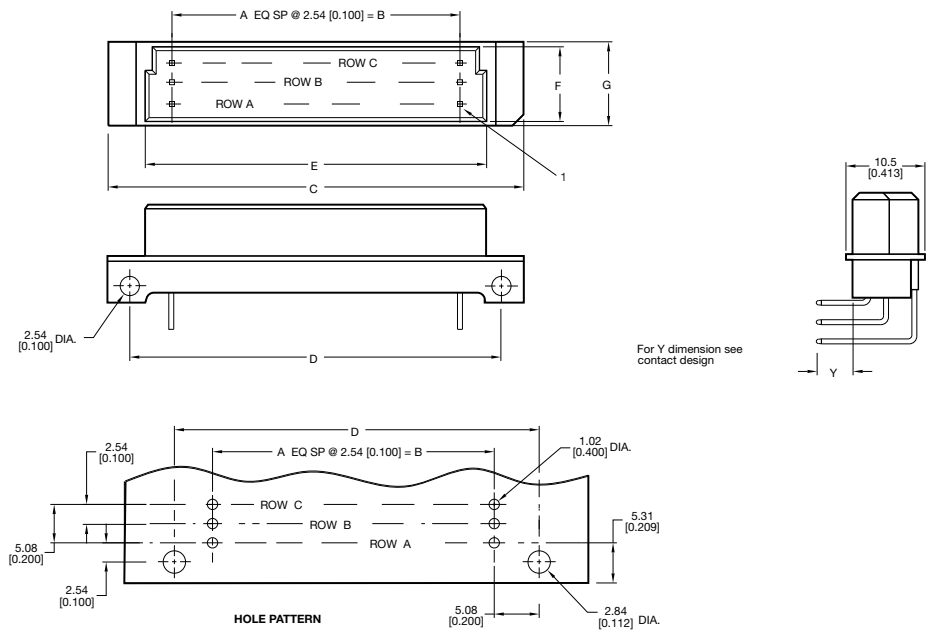


16 contacts, rows a + c even loading



16 contacts, rows a loading only

DIMENSIONS



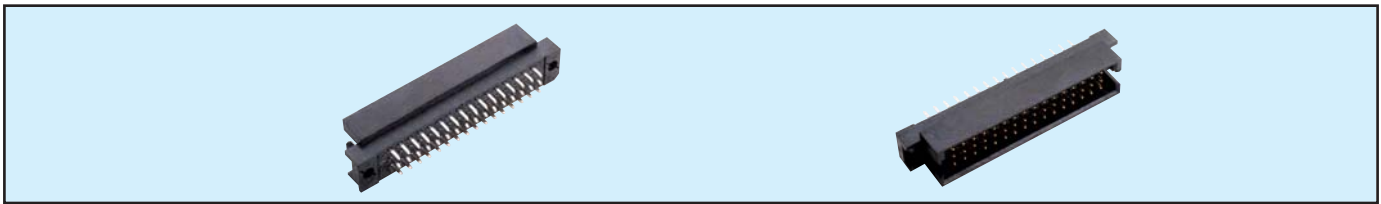
Unit: millimeters (inches)

No. Contact Positions	Contact Rows	A	B	C	D	E	F	G
48	3 (3 x 16)	15	38.10 (1.500)	53.90 (2.122)	48.26 (1.900)	44.30 (1.744)	8.48 (0.334)	10.50 (0.413)

Male Style 1/2 R High Temperature



Series 8577 – 3 rows (3 x 16) Inverted



Contact Design and Termination Length	Number of Contacts	Loading Description	Part Number Performance classes according to DIN 41612		
			II	I	
2.9 mm (Y) Straight		48	a + b + c fully loaded	10 8577 048 001 025	10 8577 048 001 049
		32	a + c fully loaded	10 8577 048 001 026	10 8577 048 001 050
		16	a + c even loading	10 8577 048 001 033	10 8577 048 001 057
		16	a loading only	10 8577 048 001 027	10 8577 048 001 051
		46 + 2	fully loaded + ground	10 8577 048 101 025	10 8577 048 101 049
4.5 mm (Y) Straight		48	a + b + c fully loaded	10 8577 048 002 025	10 8577 048 002 049
		32	a + c fully loaded	10 8577 048 002 026	10 8577 048 002 050
		16	a + c even loading	10 8577 048 002 033	10 8577 048 002 057
		16	a loading only	10 8577 048 002 027	10 8577 048 002 051
		46 + 2	fully loaded + ground	10 8577 048 102 025	10 8577 048 102 049

NB: Alternative Prefix Variations Available: 16, please refer to Page 10.

Additional Plating & Loading Variations: Please contact your local AVX sales office or distributor.

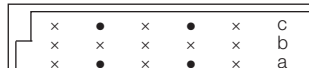
LOADING DESCRIPTION



48 contacts, rows a + b + c fully loaded



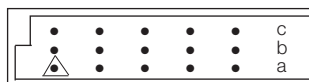
32 contacts, rows a + c fully loaded



16 contacts, rows a + c even loading



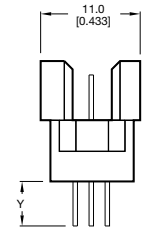
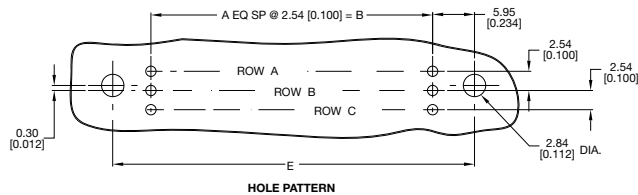
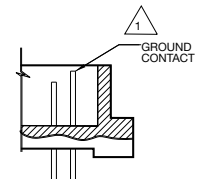
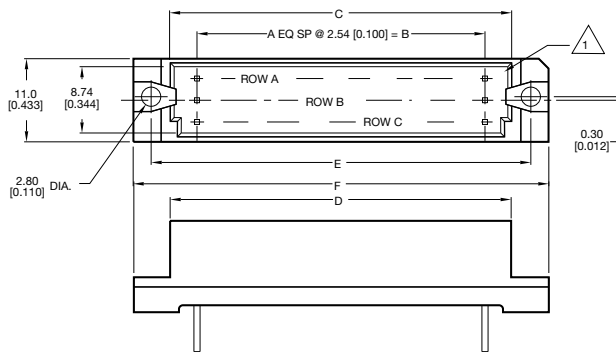
16 contacts, row a loading only



46 + 2 contacts, fully loaded with ground in A1 & A16

△ denotes ground pin

DIMENSIONS



For Y dimension see contact design

Unit: millimeters (inches)

No. Contact Positions	Contact Rows	A	B	C	D	E	F
48	3 (3 x 16)	15	38.10 (1.500)	44.70 (1.760)	47.29 (1.862)	49.99 (1.968)	54.91 (2.162)

Female Style R High Temperature



Series 8577 – 3 rows (3 x 32) Inverted



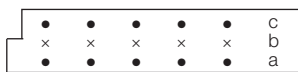
Contact Design and Termination Length	Number of Contacts	Loading Description	Part Number	
			Performance classes according to DIN 41612	
			II	I
0.6 x 0.6 mm Post Profile 3.0 mm (Y) Right Angled	96	a + b + c fully loaded	20 8577 096 002 025	20 8577 096 002 049
	64	a + c fully loaded	20 8577 096 002 026	20 8577 096 002 050
	32	a + c even loading	20 8577 096 002 033	20 8577 096 002 057
	32	a loading only	20 8577 096 002 027	20 8577 096 002 051

NB: Alternative Prefix Variations Available: 26, please refer to Page 10.
 Additional Plating & Loading Variations: Please contact your local AVX sales office or distributor.

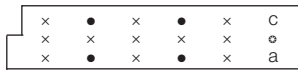
LOADING DESCRIPTION



96 contacts, rows a + b + c fully loaded



64 contacts, rows a + c fully loaded

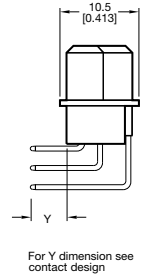
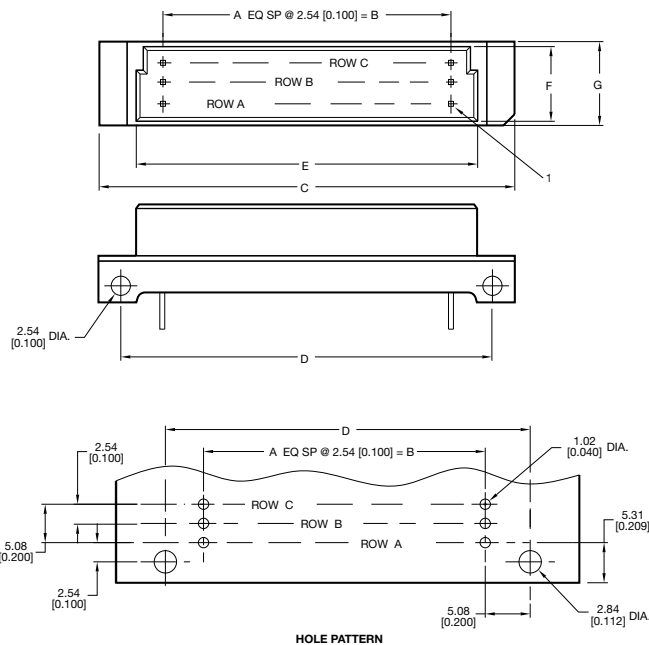


32 contacts, rows a + c even loading



32 contacts, rows a loading only

DIMENSIONS



For Y dimension see contact design

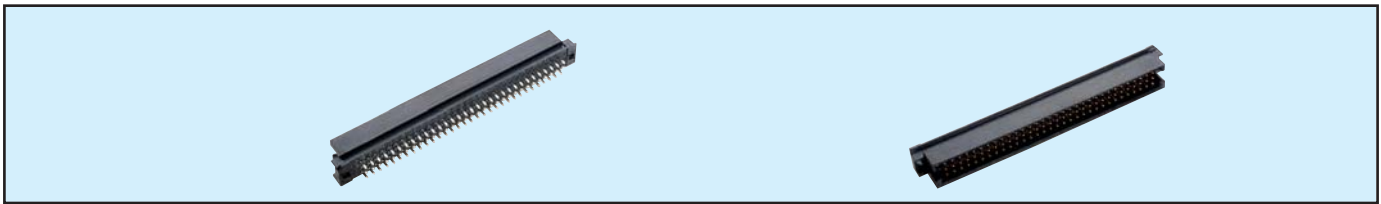
Unit: millimeters (inches)

No. Contact Positions	Contact Rows	A	B	C	D	E	F	G
96	3 (3 x 32)	31	78.74 (3.100)	93.90 (3.697)	88.90 (3.500)	84.90 (3.343)	8.48 (0.334)	10.50 (0.413)

Male Style R High Temperature



Series 8577 – 3 rows (3 x 32) Inverted

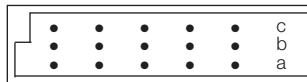


Contact Design and Termination Length	Number of Contacts	Loading Description	Part Number	
			Performance classes according to DIN 41612	
			II	I
2.9 mm (Y) Straight	96	a + b + c fully loaded	10 8577 096 001 025	10 8577 096 001 049
	64	a + c fully loaded	10 8577 096 001 026	10 8577 096 001 050
	32	a + c even loading	10 8577 096 001 033	10 8577 096 001 057
	32	a loading only	10 8577 096 001 027	10 8577 096 001 051
	46 + 2	fully loaded + ground	10 8577 096 101 025	10 8577 096 101 049
4.5 mm (Y) Straight	48	a + b + c fully loaded	10 8577 096 002 025	10 8577 096 002 049
	32	a + c fully loaded	10 8577 096 002 026	10 8577 096 002 050
	16	a + c even loading	10 8577 096 002 033	10 8577 096 002 057
	16	a loading only	10 8577 096 002 027	10 8577 096 002 051
	46 + 2	fully loaded + ground	10 8577 096 102 025	10 8577 096 102 049

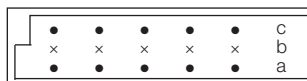
NB: Alternative Prefix Variations Available: 16, please refer to Page 10.

Additional Plating & Loading Variations: Please contact your local AVX sales office or distributor.

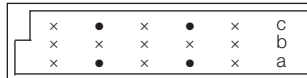
LOADING DESCRIPTION



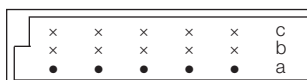
96 contacts, rows a + b + c fully loaded



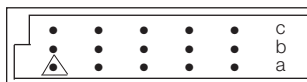
64 contacts, rows a + c fully loaded



32 contacts, rows a + c even loading



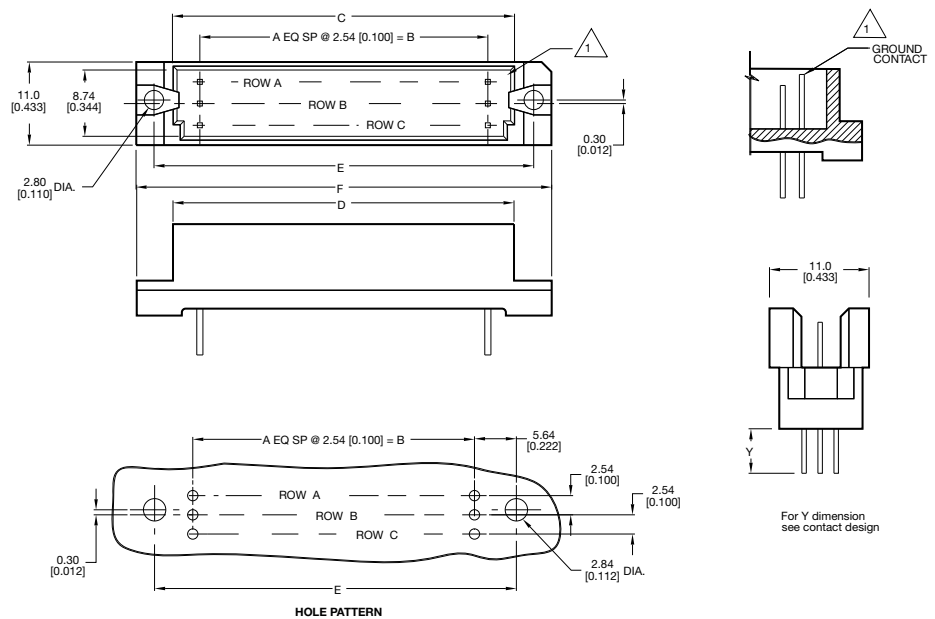
32 contacts, row a loading only



96 + 2 contacts, fully loaded with ground in A1 & A32

△ denotes ground pin

DIMENSIONS



Unit: millimeters (inches)

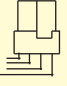
No. Contact Positions	Contact Rows	A	B	C	D	E	F
96	3 (3 x 32)	31	78.74 (3.100)	85.29 (3.358)	87.91 (3.461)	90.00 (3.543)	94.89 (3.736)

Female Style R

Expanded High Temperature

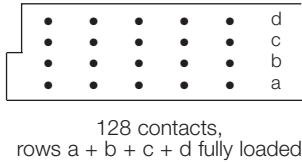
Series 8577 – 4 rows (4 x 32) Inverted



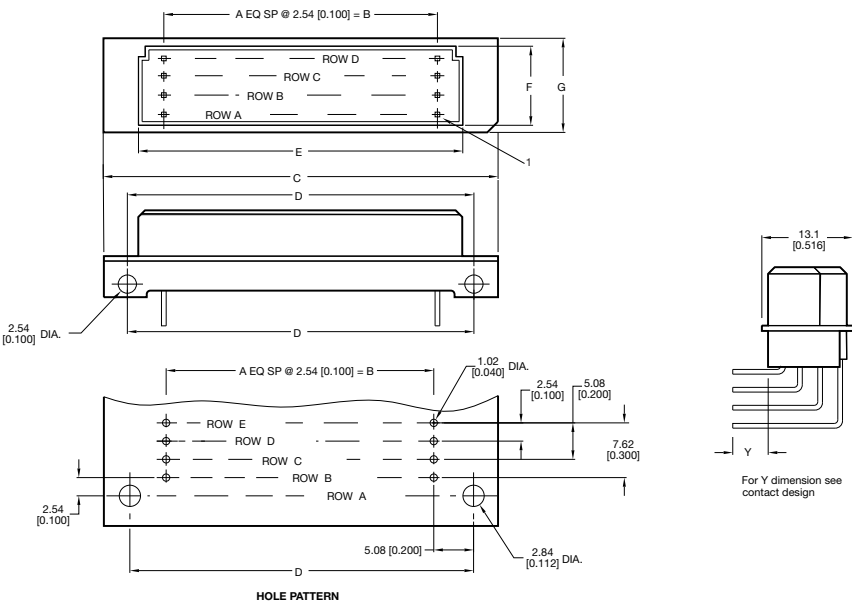
Contact Design and Termination Length	Number of Contacts	Loading Description	Part Number Performance classes according to DIN 41612	
			II	I
0.6 x 0.6 mm Post Profile 3.0 mm (Y) Right Angled 	128	a + b + c + d fully loaded	20 8577 128 002 025	20 8577 128 002 049

NB: Alternative Prefix Variations Available: 26, please refer to Page 10.
 Additional Plating & Loading Variations: Please contact your local AVX sales office or distributor.

LOADING DESCRIPTION



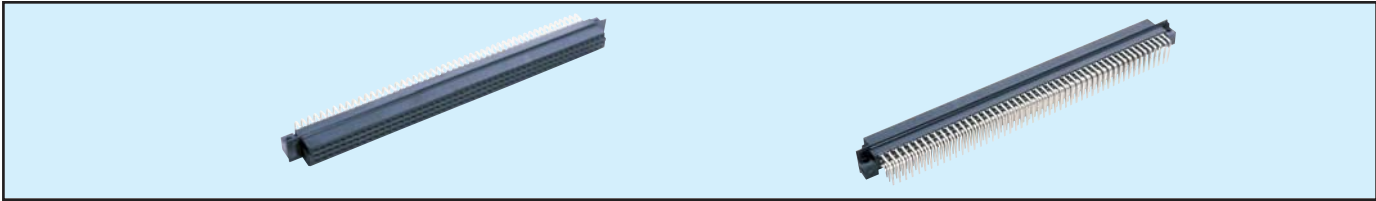
DIMENSIONS




Unit: millimeters (inches)

No. Contact Positions	Contact Rows	A	B	C	D	E	F	G
128	4 (4 x 32)	31	78.74 (3.100)	93.90 (3.697)	88.90 (3.500)	84.90 (3.343)	11.10 (0.437)	13.10 (0.516)

Female Style R Expanded High Temperature Series 8577 – 3 rows (3 x 50) Inverted



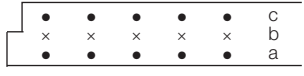
Contact Design and Termination Length	Number of Contacts	Loading Description	Part Number Performance classes according to DIN 41612	
			II	I
0.6 x 0.6 mm Post Profile 2.8 mm (Y) Right Angled 	150	a + b + c fully loaded	20 8577 150 001 025	20 8577 150 001 049
	100	a + c fully loaded	20 8577 150 001 026	20 8577 150 001 050

NB: Alternative Prefix Variations Available: 26, please refer to Page 10.
 Additional Plating & Loading Variations: Please contact your local AVX sales office or distributor.

LOADING DESCRIPTION

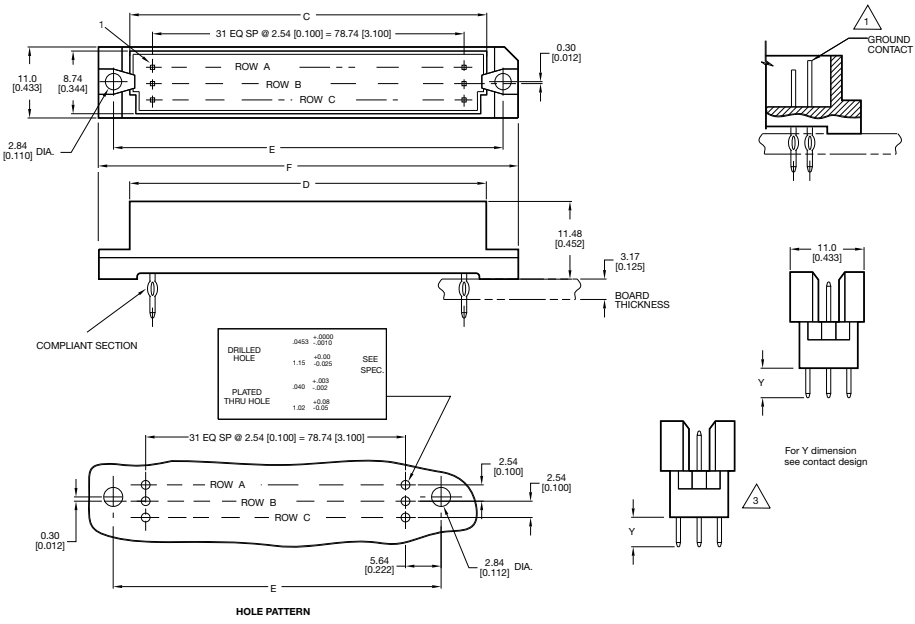


150 contacts, rows a + b + c fully loaded



100 contacts, rows a + c fully loaded

DIMENSIONS



Unit: millimeters (inches)

No. Contact Positions	Contact Rows	A	B	C	D	E	F
150	3 (3 x 50)	49	125.50 (4.941)	130.90 (5.154)	133.60 (5.260)	135.70 (5.343)	140.60 (5.536)