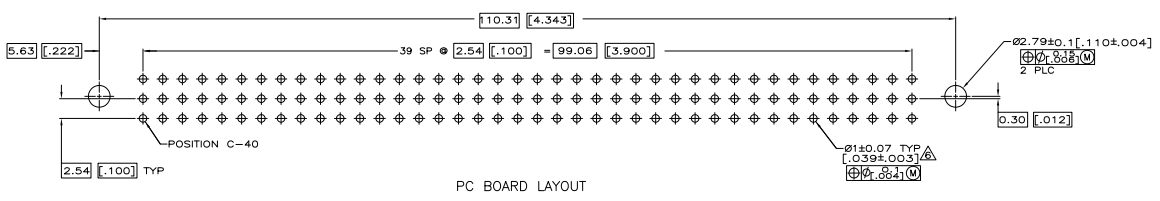
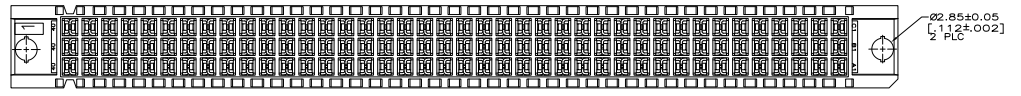
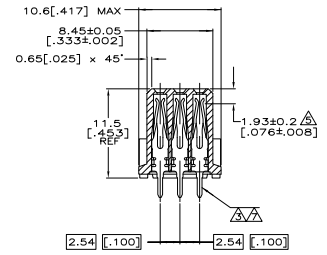
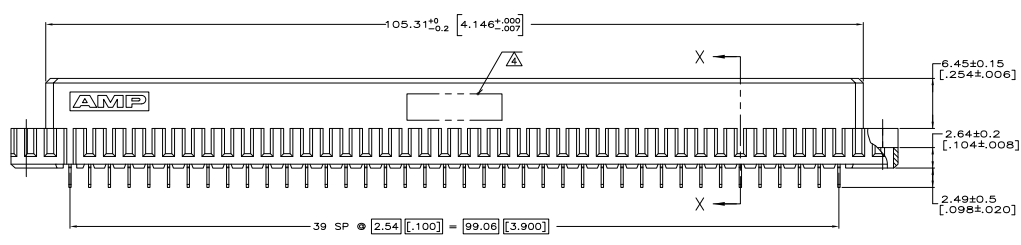
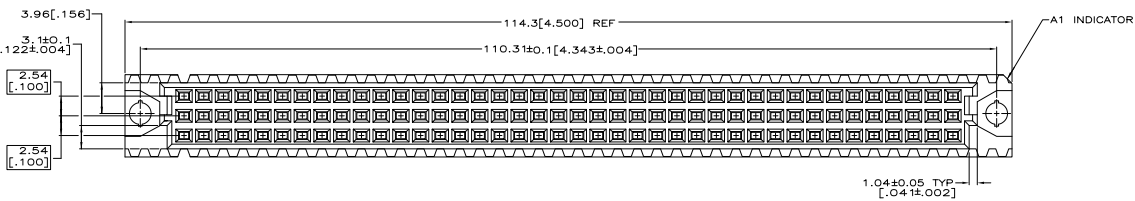


THIS DRAWING IS UNPUBLISHED
 ALL RIGHTS RESERVED

REV	DATE	DESCRIPTION	BY	CHK
0	RELEASED PER EC 0512-002-05		27MWT05	JDP/AMS
01	REVISED PER ECO-10-000444		19MWH10	KK/HMR

- △ HOUSING MATERIAL: GLASS-FILLED POLYMER.
- △ CONTACT MATERIAL: COPPER ALLOY.
- △ CONTACT FINISH: DIN 41612 CLASS 2 IN CONTACT AREA. TIN PLATE ON POSTS.
- △ PART NUMBER, DATE CODE IDENTIFICATION, CSA LOGO IN THIS APPROXIMATE AREA.
- △ CONTACT POINT.
- △ RECOMMENDED HOLE SIZE FOR MANUAL APPLICATION OF CONNECTOR ONTO PC BOARD.
- △ CONTACT FINISH: DIN 41612 CLASS 3 IN CONTACT AREA. TIN PLATE ON POSTS.
- △ OBSOLETE PARTS: OBSOLETE CIS STREAMLINING PER D.RENAUD/D.SINISI



POSITIONS LOADED	ROWS LOADED	POSITION	ASSY PART NUMBER
1 THRU 40	X X X	120	5535097-9
1 THRU 40	X X X	120	5535097-5

THIS DRAWING IS A CONTROLLED DOCUMENT.		REV	DATE	DESCRIPTION	BY	CHK
REV	DATE	DESCRIPTION	BY	CHK		
0		RELEASED PER EC 0512-002-05	27MWT05	JDP/AMS		
01		REVISED PER ECO-10-000444	19MWH10	KK/HMR		