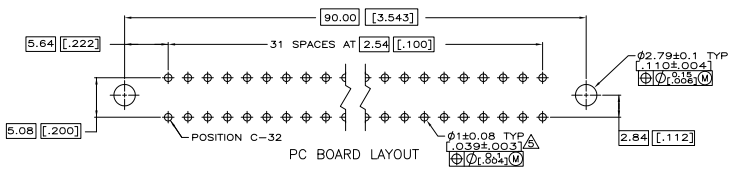
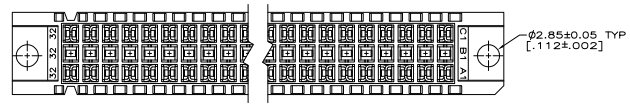
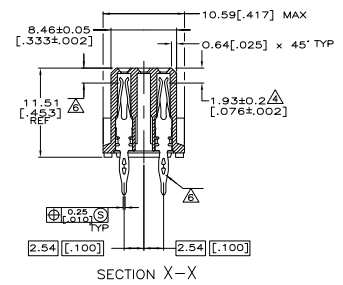
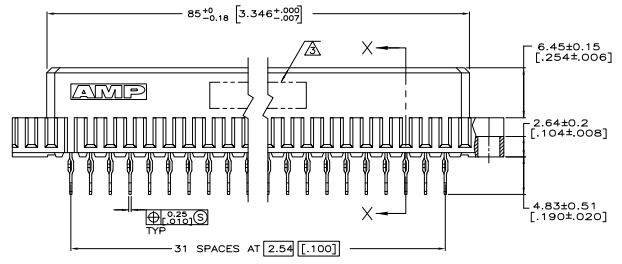
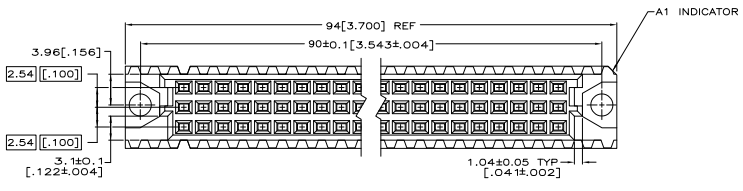


- △ HOUSING MATERIAL: GLASS-FILLED POLYMER.
- △ CONTACT MATERIAL: COPPER ALLOY.
- △ PART NUMBER, DATE CODE IDENTIFICATION, CSA LOGO IN THIS APPROXIMATE AREA.
- △ POINT OF MEASUREMENT FOR GOLD.
- △ ACTION PIN POSTS REQUIRE 1.57[.062] MIN THICK PC BOARD. RECOMMENDED PC BOARD HOLES ARE Ø 1.91±0.2 [.0453±.001] DRILLED HOLE WITH 0.2-0.07[.001-0.003] COPPER AND 0.008[.0003] MIN TIN-LEAD PLATING. FINISHED HOLE AFTER PLATING: Ø0.94-1.09[.057-.043].
- △ CONTACT FINISH: DIN 41612 CLASS 2 ON CONTACT AREA. TIN PLATE ON POSTS.



| | | | | | |
|-----------|------------------|------|--------|----|------------------|
| 1 THRU 32 | X | - | X | 64 | 5535059-5 |
| 1 THRU 32 | X | - | X | 64 | 5535059-4 |
| FINISH | POSITIONS LOADED | C | B | A | LOADED POSITION |
| | | ROWS | LOADED | | ASSY PART NUMBER |

THIS DRAWING IS A CONTROLLED DOCUMENT. IN POLYCHROME SEARCH **Extron** TDS Electronics Corporation
 Haverhill, Pa 17105-3608

ASSEMBLY, RECEPTACLE, EUROCARD, TYPE C, LEAD-FREE, R and G, 64/96 POSITION, 4.83[.190] TOOLLESS PRESS-FIT.

DATE: 05/05/90 DRAWING NO: A100779[G]=5535059 REVISIONS TO: -

CUSTOMER DRAWING: DATE: 4/1 YEAR: 1 # 1 REV: O