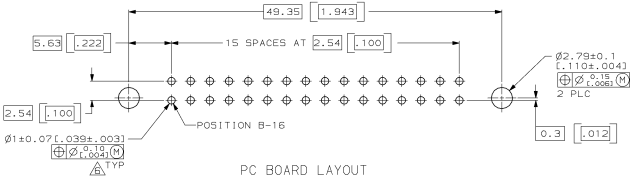
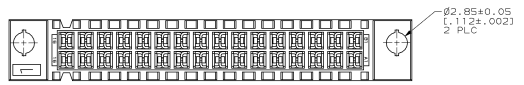
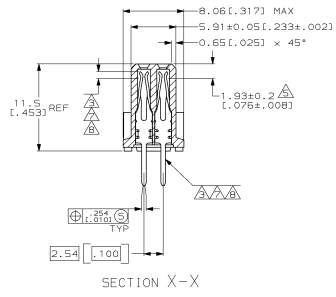
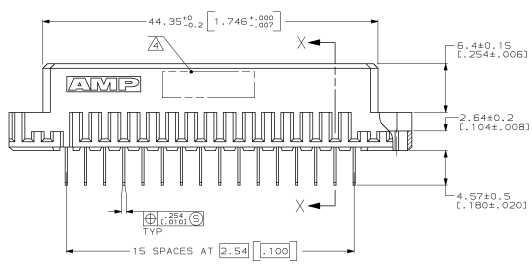
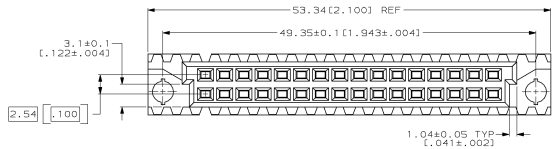


DRAWING MADE IN THIRD ANGLE PROJECTION
 THIS DRAWING IS UNPUBLISHED. RELEASED FOR PUBLICATION
 © COPYRIGHT 19 BY AMP INCORPORATED. ALL INTERNATIONAL RIGHTS RESERVED.

REV	DATE	DESCRIPTION	DATE	APP
0		DRAWN	-	-
A	ECN A05986		10/19/94	L5B
B	ECN A06495		10/19/94	L5B
C	EC 0010-0613-93		5/28/93	L5B
D	EC 0010-1455-95		1/23/96	CR
E	EC 0010-1484-95		4/1/96	CR



- △ HOUSING MATERIAL: GLASS-FILLED POLYESTER. COLOR: GRAY.
- △ CONTACT MATERIAL: PHOSPHOR BRONZE.
- △ CONTACT FINISH: DIN 41612 CLASS 2 IN CONTACT AREA. NICKEL UNDERPLATE ALL OVER. TIN-LEAD ON POSTS.
- △ PART NUMBER, DATE CODE IDENTIFICATION, CSA LOGO IN THIS APPROXIMATE AREA, ON REVERSE SIDE.
- △ POINT OF MEASUREMENT FOR GOLD.
- △ RECOMMENDED HOLE SIZE FOR MANUAL APPLICATION OF CONNECTOR ONTO PC BOARD.
- △ CONTACT FINISH: DIN 41612 CLASS 3 IN CONTACT AREA. NICKEL UNDERPLATE ALL OVER. TIN-LEAD ON POSTS.
- △ CONTACT FINISH: DIN 41612 CLASS 2 IN CONTACT AREA. NICKEL UNDERPLATE ALL OVER. TIN-LEAD ON POSTS.

OBSELETE	1 THRU 16	X	X	32	650858-9
△	1 THRU 16	X	X	32	650858-5
△	1 THRU 16	X	X	32	650858-4

NOTE	POSITIONS LOADED	R	A	NO. OF ROWS LOADED	ASSY PART NUMBER
DO NOT SCALE PRINT. UNLESS SPECIFIED, DIMENSIONS IN MM (INCHES). TOLERANCES ON: 1. P.C. DEC = 2. P.L.C. DEC = 0.13(.005) MILLIS =	DR L: BRINER 6/27/90 DR L: BROWN 7/18/90 APPD L: BROWN 7/18/90 MATERIAL HSG L: BROWN 7/19/90 CONT L: BROWN				RECEPTACLE ASSEMBLY, EUROCARD, TYPE "B"



CUSTOMER DRAWING