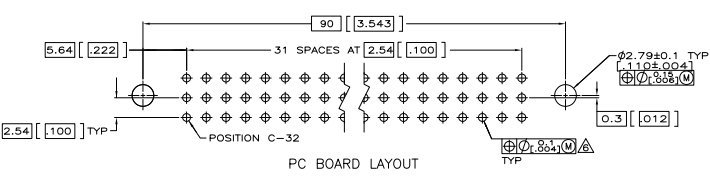
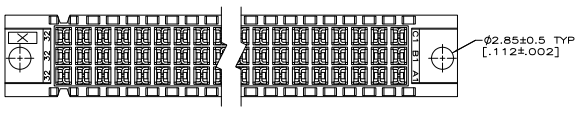
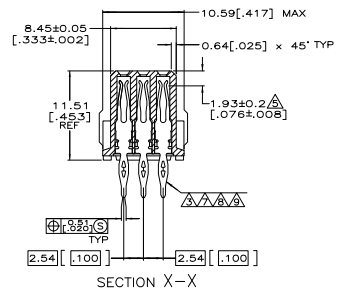
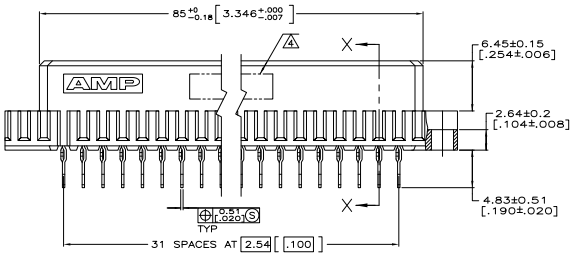
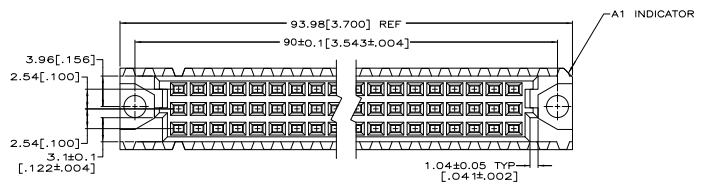


REV	DATE	DESCRIPTION	BY	CHK	APP
AD 25					
R1		REVISED PER EDD-11-004835	11MMR11	RK	HMR

- △ HOUSING MATERIAL: GLASS-FILLED POLYESTER. COLOR: GRAY.
- △ CONTACT MATERIAL: PHOSPHOR BRONZE.
- △ CONTACT FINISH: DIN 41612 CLASS 2 IN CONTACT AREA. TIN ON POSTS.
- △ PART NUMBER, DATE CODE IDENTIFICATION, CSA LOGO IN THIS APPROXIMATE AREA.
- △ POINT OF MEASUREMENT FOR GOLD.
- △ ACTION: PIN POSTS REQUIRE 1.57[.062] MINIMUM THICK PC BOARD. RECOMMENDED PC BOARD HOLES ARE Ø1.15[.045] Ø1.045[.041] DRILLED HOLE WITH 0.02-0.07[.001-.003] COPPER AND 0.008[.0003] MINIMUM TIN-LEAD PLATING. FINISHED HOLE AFTER PLATING: Ø0.94-1.09[.037-.043].
- △ CONTACT FINISH: 0.00127[.000050] GOLD IN CONTACT AREA. 0.00127[.000050] NICKEL UNDERPLATE ALL OVER. TIN-LEAD ON POSTS.
- △ CONTACT FINISH: DIN 41612 CLASS 3 IN CONTACT AREA. TIN-LEAD ON POSTS.
- △ CONTACT FINISH: DIN 41612 CLASS 2 IN CONTACT AREA. TIN-LEAD ON POSTS.



NOTES	POSITIONS LOADED	ROWS LOADED	POSITION	ASSY PART NUMBER
1 THRU 32	X X X	X	96	7-535032-4
1 THRU 32	X X X	X	96	535032-9
1 THRU 32	X X X	X	96	535032-5
1 THRU 32	X X X	X	96	535032-4
1 THRU 32	X X X	X	96	535032-1

THIS DRAWING IS A CONTROLLED DOCUMENT.		DATE	12/24/98	REV	1
DESIGNED BY	APPROVED BY	DATE	12/27/98	REV	1
PROJECT NAME		TE Connectivity			
PROJECT FILE		ASSEMBLY, RECEPTACLE, EUROCARD, TOOLLESS PRESSFIT,			
OPERATION SPEC		96 POSITION			
SIZE	DATE	ISSUE	DRAWING NO	REV	REWORKED TO
A1	00779	G	535032		
CUSTOMER DRAWING		SCALE	4:1	SHEET	1 OF 1