

4

3

2

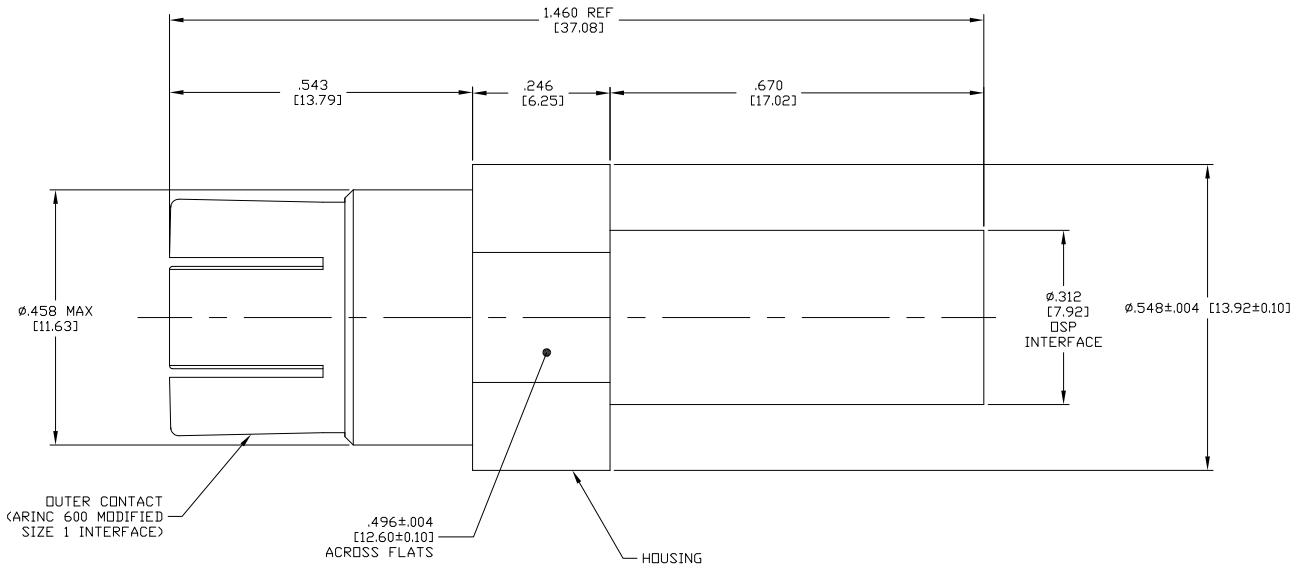
1

THIS DRAWING IS UNPUBLISHED. RELEASED FOR PUBLICATION N/A, N/A.

© COPYRIGHT N/A BY TYCO ELECTRONICS CORPORATION. ALL RIGHTS RESERVED.

LOC	DIST	REVISIONS				
DF	XO	P	LR	DATE	MIN	APD
		A		REV PER 0H14-0115-03	11-03	CT RG

COMPONENT	MATERIAL	FINISH
HOUSING	STAINLESS STEEL PER ASTM-A-484 OR ASTM-A-582 TYPE 303	PASSIVATED
DIELECTRIC	PTFE FLUOROCARBON PER ASTM-D-1457	-
OUTER CONTACT	BERYLLIUM COPPER PER ASTM-B-196 ALLOY C17300	GOLD PLATED PER ASTM-B-488
OSP CONTACT RING AND SHIM	BERYLLIUM COPPER PER ASTM-B-196 ALLOY C17300 & C17200	GOLD PLATED PER ASTM-B-488
CENTER CONTACT	BERYLLIUM COPPER PER ASTM-B-196 OR 197 ALLOY C17300, COND H	GOLD PLATED PER ASTM-B-488
BUSHING	STAINLESS STEEL PER ASTM-A-484 OR ASTM-A-582 TYPE 303	GOLD PLATED PER ASTM-B-488



1. FOR USE IN ARINC 600 MODIFIED SIZE 1 PIN CONTACT CAVITY.

1218713-1
PART NO.

THIS DRAWING IS A CONTROLLED DOCUMENT.		DR C. C. THOMAS 8-5-03	 Tyco Electronics Corporation Harrisburg, Pa 17105-3608	SIZE CASE CODE DRAWING NO. A2 00779 C=1218713	RESTRICTED TO -
DIMENSIONS: INCHES [mm] 0 PLG ± .005 1 PLG ± .005 2 PLG ± .005 (0.15) 3 PLG ± .005 (0.15) 4 PLG ± .005 (0.15) ANGLES ± .5°		OK S. GLATFELTER 8-5-03 APPD S. GLATFELTER 8-5-03 PRODUCT SPEC APPLICATION SPEC HEIGHT FINISH			
MATERIAL SEE TABLE		CUSTOMER DRAWING		SCALE 10:1	SHEET 1 OF 1