

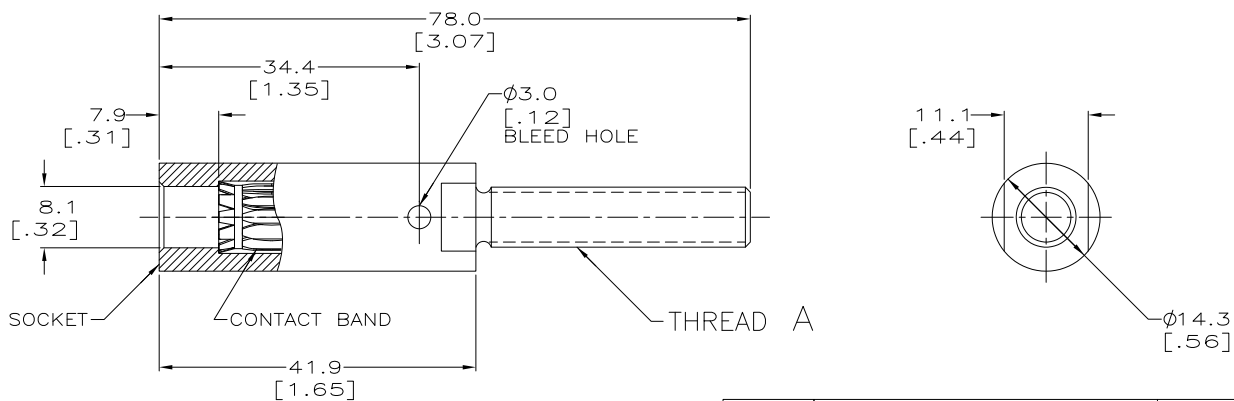
DRAWING MADE IN THIRD ANGLE PROJECTION

THIS DRAWING IS UNPUBLISHED. RELEASED FOR PUBLICATION
 © COPYRIGHT 19 BY AMP INCORPORATED. ALL INTERNATIONAL RIGHTS RESERVED.

LOC	DIST	ZONE	LTR	REVISIONS	DATE	APPD
CH	11			A	ECN 92102701	
				B	EC 0B20-1551-98	20/NOV/98 RNP
				B1	REVISED PER ECO-09-020935	09SEP99 AEG

1. WIRE RACK MARKS PERMISSIBLE IN THREAD RELIEF AFTER PLATING.

2. OBSOLETE PARTS: OBSOLETE CIS STREAMLINING PER D.RENAUD/D.SINISI



△	M8 X 1.25-6g	192271-3
OBSOLETE	5/16-24UNF-2A W/HARDWARE	192271-2
	5/16-24UNF-2A	192271-1

		THREAD A	PART NO
DO NOT SCALE PRINT. UNLESS SPECIFIED DIMENSIONS IN mm [INCHES] TOLERANCES ON: 1. PLC DEC ± 0.5 [.02] 2. PLC DEC ± 0.25 [.010] ANGLES ± -	DR D. WILSON 03-12-92 CHK R. JAYNE 03-13-92 APPD S. SIEGRIST 03-17-92 APPD P. GLASER 03-17-92	AMP	AMP Incorporated Harrisburg, PA 17105-3608
MATERIAL BRASS	PRODUCT SPEC -	NAME SOCKET ASSY, 8mm	
FINISH SILVER PLATE 200-400 μ THK	APPLICATION SPEC -	SIZE B	CAGE CODE 00779
	WEIGHT -	SCALE 2:1	DRAWING NO 192271
			SHEET 1 OF 1

AMP 1470-15 REV 7-90
 Tronics/061031.024944 (YYMDD.HHMMSS) from
 CompServision, Inc., Medusa Revision 12.2.51

CUSTOMER DRAWING