

THIS DRAWING IS UNPUBLISHED. RELEASED FOR PUBLICATION. COPYRIGHT - By - ALL RIGHTS RESERVED.

LOC	REV	REVISIONS	DATE	OWN	APPD
CH	11				
		D2	REVISED PER ECO-11-004917	11MAR11	RK HMR

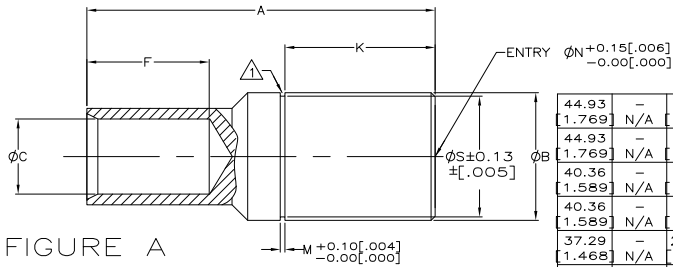


FIGURE A

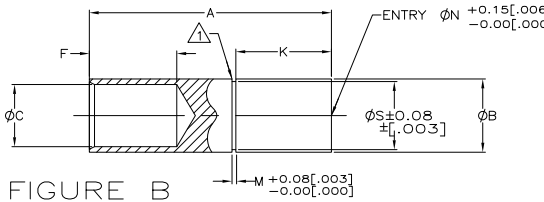


FIGURE B

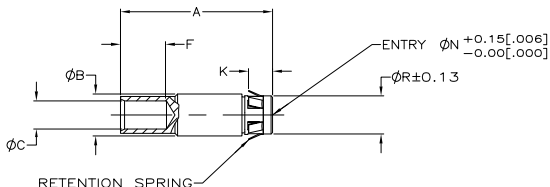


FIGURE D

ØS	ØR	ØN	M	K	F	ØC	ØB	A	FIGURE	MATING Ø PIN	WIRE AWG	PART NUMBER
44.93	-	35.10	1.73	55.88	53.6	36.19	47.62	140.5	A	35mm	1000 MCM	1-193673-9
1.769	N/A	1.382	0.068	2.200	2.11	1.425	1.875	5.53				
44.93	-	35.10	1.73	55.88	45	30.43	47.62	129.5	A	35mm	700 MCM	1-193673-8
1.769	N/A	1.382	0.068	2.200	1.77	1.198	1.875	5.10				
40.36	-	30.12	1.73	55.88	53.6	36.19	42.80	139.4	B	30mm	1000 MCM	1-193673-7
1.589	N/A	1.186	0.068	2.200	2.11	1.425	1.685	5.49				
40.36	-	30.12	1.73	55.88	45	30.43	42.80	127.2	A	30mm	700 MCM	1-193673-6
1.589	N/A	1.186	0.068	2.200	1.77	1.198	1.685	5.01				
37.29	-	25.09	1.73	55.88	50.8	34.98	40.66	135.4	B	25mm	900 MCM	1-193673-5
1.468	N/A	0.988	0.068	2.200	2.00	1.377	1.601	5.33				
37.29	-	25.09	1.73	55.88	41.7	27.94	40.66	123.4	A	25mm	600 MCM	1-193673-4
1.468	N/A	0.988	0.068	2.200	1.64	1.100	1.601	4.86				
25.35	-	20.09	1.42	35.56	32.5	23.11	27.23	89.9	B	20mm	400 MCM	1-193673-3
0.998	N/A	0.791	0.056	1.400	1.28	0.910	1.072	3.54				
25.35	-	20.09	1.42	35.56	25.9	18.31	27.23	80.5	A	20mm	250 MCM	1-193673-2
0.998	N/A	0.791	0.056	1.400	1.02	0.721	1.072	3.17				
22.40	-	16.10	1.17	33.02	28.4	20.04	23.57	80	B	16mm	300 MCM	1-193673-1
0.882	N/A	0.634	0.046	1.300	1.12	0.789	0.928	3.15				
22.40	-	16.10	1.17	33.02	24.1	16.94	23.57	73.9	A	16mm	4/0	1-193673-0
0.882	N/A	0.634	0.046	1.300	0.95	0.677	0.928	2.91				
18.62	-	12.09	1.17	30.48	24.1	17.22	20.19	70.1	B	12mm	4/0	1-193673-9
0.733	N/A	0.476	0.046	1.200	0.95	0.678	0.795	2.76				
18.62	-	12.09	1.17	30.48	19.6	13.74	20.19	63.7	A	12mm	2/0	193673-8
0.733	N/A	0.476	0.046	1.200	0.77	0.541	0.795	2.51				
SEE SHEET 2										8mm	1/0	193673-7
-	13.51	8.10	-	5.2	14.2	9.91	14.45	57.4	D	8mm	2	193673-6
N/A	0.532	0.319	N/A	0.21	0.56	0.390	0.569	2.26				
-	9.45	6.04	-	5.2	11.4	7.36	10.41	37.6	D	6mm	4	193673-5
N/A	0.372	0.238	N/A	0.21	0.45	0.290	0.410	1.48				
-	9.45	6.04	-	5.2	9.4	5.97	10.41	36.1	D	6mm	6	193673-4
N/A	0.372	0.238	N/A	0.21	0.37	0.235	0.410	1.42				
-	6.65	4.09	-	6.2	9.1	4.60	7.62	33.3	D	4mm	8	193673-3
N/A	0.262	0.161	N/A	0.25	0.36	0.181	0.300	1.31				
-	6.65	4.09	-	6.2	9.1	3.68	7.62	33.3	D	4mm	10	193673-2
N/A	0.262	0.161	N/A	0.25	0.36	0.145	0.300	1.31				
-	4.75	2.23	-	5.2	9.1	2.54	5.89	28.7	D	2mm	12/14	193673-1
N/A	0.187	0.088	N/A	0.21	0.36	0.105	0.232	1.13				

- 1. OBSOLETE PARTS: OBSOLETE CIS STREAMLINING PER D.RENAUD/D.SINISI
- 2. ALL DIMENSIONS ARE REFERENCE ONLY.
- 3. GROOVE PROVIDED FOR USE WITH COMMERCIALY AVAILABLE RETAINING RINGS, I.E. MS-16624 TYPE.

THIS DRAWING IS A CONTROLLED DOCUMENT FOR AIR PROPRIETARY. IT IS SUBJECT TO CHANGE AND THE CONTROLLING ENGINEERING ORGANIZATION SHOULD BE CONTACTED FOR THE LATEST REVISION.

THIS DRAWING IS A CONTROLLED DOCUMENT.		OWN	TURNER	09-10-93
DIMENSIONS: (MM/INCHES)		APPD	A.L.G.	09-10-93
TOLERANCES UNLESS OTHERWISE SPECIFIED:		DATE	09-10-93	REV
Ø P/C	±	PRODUCT SPEC		
Ø P/C	±	APPLICATION SPEC		
Ø P/C	±	WEIGHT		
Ø P/C	±	CUSTOMER DRAWING		
MATERIAL: BODY-COPPER ALLOY; RETENTION SPRING: STAINLESS STEEL; CONTACT BAND: INCU.		FINISH: BODY AND BAND: SILVER OVER NICKEL; SPRING: NONE.		
SIZE		CASE CODE		DRAWING NO
A2		00779		193673
RESTRICTED TO		SCALE		SHEET
D2		NTS		1 of 2

4

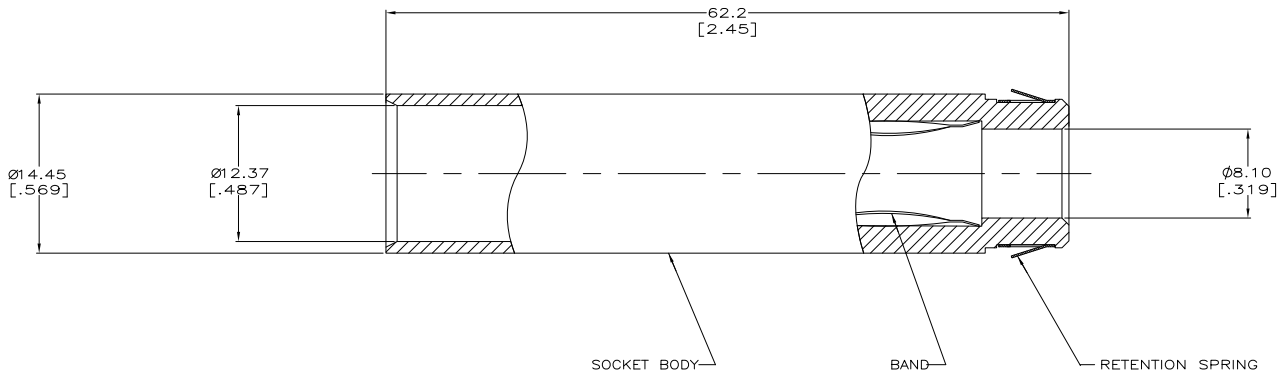
3

2

1

THIS DRAWING IS UNPUBLISHED. RELEASED FOR PUBLICATION
 © COPYRIGHT - By - ALL RIGHTS RESERVED.

LOC	DIST	REVISIONS			
F	LR	DESCRIPTION	DATE	DRN	APD
CH	11	SEE SHEET 1	-	-	-



THIS DRAWING IS A CONTROLLED DOCUMENT.		DRN	R. N. POLK	17/OCT/97	TE Connectivity	
DIMENSIONS: mm(0.1)		CHK	-	-	SOCKET ASSY, 2-35mm, CRIMP	
TOLERANCES UNLESS OTHERWISE SPECIFIED:		NAME	-	-	RESTRICTED TO	
0 P.L.C.	±	PRODUCT SPEC	-	-	-	
1 P.L.C.	±	APPLICATION SPEC	-	SIZE	CAGE CODE	DRAWING NO.
2 P.L.C.	±	WEIGHT	-	A2	00779	C=193673
3 P.L.C.	±	CUSTOMER DRAWING	-	SCALE	-	SHEET 2 of 2
4 P.L.C.	±					REV D2
ANGLES	±					
FINISH	-					

1471-9 (3/11)

193673