

4

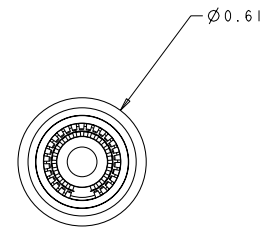
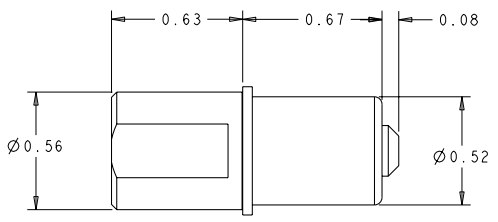
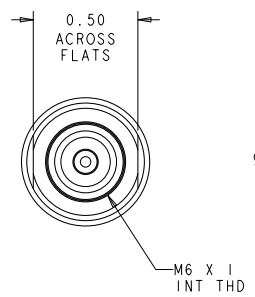
3

2

1

THIS DRAWING IS UNPUBLISHED. RELEASED FOR PUBLICATION BY TYCO ELECTRONICS CORPORATION. ALL RIGHTS RESERVED. COPYRIGHT 20

REVISIONS			
P	LYR	DESCRIPTION	DATE
A		NEW RELEASE	21OCT2008



1. PART NUMBER CHANGES AND/OR DESIGN CHANGES AFFECTING INTERCHANGEABILITY REQUIRE PRIOR TYCO ELECTRONICS APPROVAL AND AUTHORIZATION BY REVISION TO THIS DRAWING
2. ITEMS PROVIDED TO THIS SPECIFICATION TO BE PERMANENTLY IDENTIFIED PER THE FOLLOWING IDENTIFIER LABEL

YEAR | WEEK

TYCO ELECTRONICS P/N DATE CODE (e.g. 0106)

XXXXXX-X XXXX

△ MATERIALS:
 CONTACT: COPPER ALLOY
 CROWN BANDS: COPPER ALLOY

△ FINISHES:
 CONTACT: SILVER PLATE: .000200/.000300 THK OVER
 NICKEL PLATE: .000040 MIN THK
 CROWN BANDS: GOLD: .000040 MIN THK OVER
 NICKEL: .000040 THK

AS SHOWN	6648429-1
DESCRIPTION	PART NO.

<small>TOP DIMENSIONS CONTROLLED BY THE CUSTOMER'S DIMENSIONAL CONTROL PLAN. ALL DIMENSIONS ARE UNLESS OTHERWISE SPECIFIED.</small>		DWG: C. ROHLER 21OCT2008 CDR: D. ORRIS 21OCT2008 APPR: M. PERCHERRE 21OCT2008	Tyco Electronics Harrisburg, PA 17105-3608
DIMENSIONS: INCHES	TOLERANCES UNLESS OTHERWISE SPECIFIED: 0 PLC ±.01 1 PLC ±.01 2 PLC ±.01 3 PLC ±.005 4 PLC ±.01 ANGLES ±.5	PRODUCT SPEC: APPLICATION SPEC	NAME: CONTACT, SOCKET, SIZE #0 DOUBLE CROWN, FEMALE THD STYLE DRAWERS
MATERIAL: FINISH:	WEIGHT: CUSTOMER DRAWING	SIZE: A2 CASE CODE: 00779 DRAWING NO: 6648429	RESTRICTED TO: SCALE: 3:1 SHEET 1 OF 1 REV A