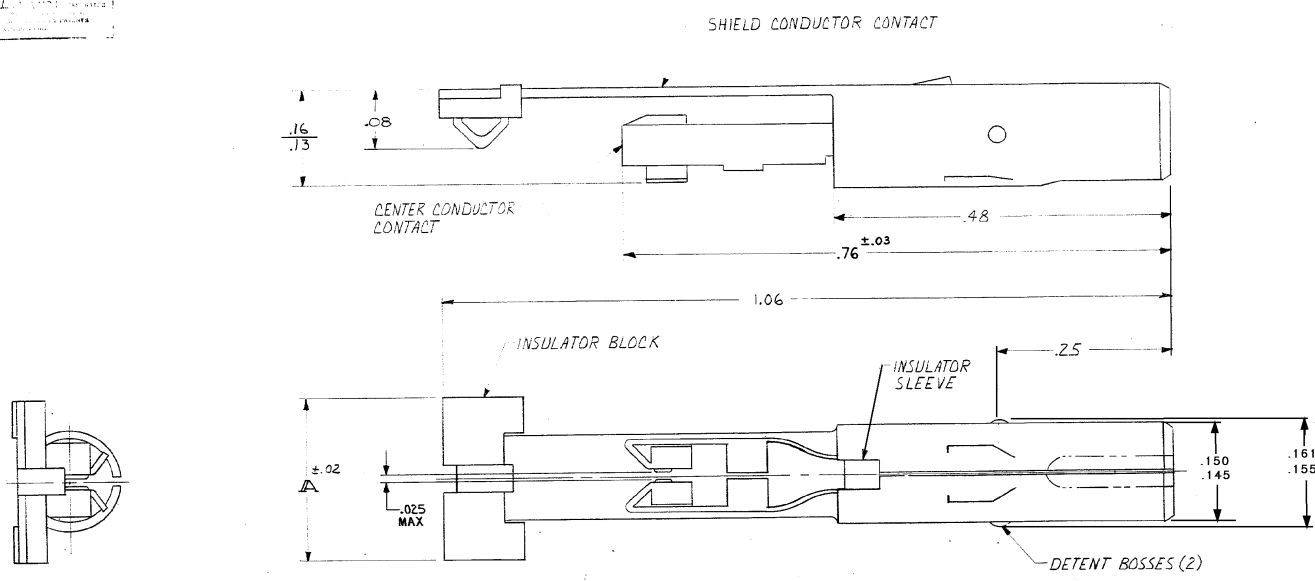


DRAWING MADE IN AMERICAN PROJECTION

NUMBER 422972 3/2



1. INSULATOR BLOCK IS ABS PER MIL-M-22544.
INSULATOR SLEEVE IS POLYCARBONATE PER MIL. SPEC. L-P-393.
2. CENTER CONDUCTOR CONTACT IS PER AMP P/N 422353-2.
3. SHIELD CONDUCTOR CONTACT IS BERYLLIUM COPPER,
PLATED WITH .000630 GOLD OVER .000050 NICKEL.
4. THIS ASSEMBLY MATES WITH RECEPTLES IN AMP P/N 425475-3.

1-422972-3	.200	GRAY	MICD
1-422972-1	.240	BLACK	COAXIAL
PART NO.	A	INSULATOR BLOCK COLOR	SYSTEM TYPE

QTY	NUMBER	NAME	REMARKS	ITEM NO.
1	1-422972-3	GRAY	MICD	
1	1-422972-1	BLACK	COAXIAL	
1	A	INSULATOR BLOCK COLOR	SYSTEM TYPE	

REV	DATE	BY	CHKD	DESCRIPTION
F	ECO-08-014134	PY	DE	
E	REVISED	ECN 5-31-44		
D	REVISED	FOR LOCAL		
C	REVISED	FOR LOCAL		
B	REVISED	FOR LOCAL		
A	REVISED	FOR LOCAL		

REMOVABLE CONTACT

AMP INCORPORATED

LOC 56 422972

10:1 REAR RECEPTACLE SUB-ASSY

CUSTOMER DRAWING