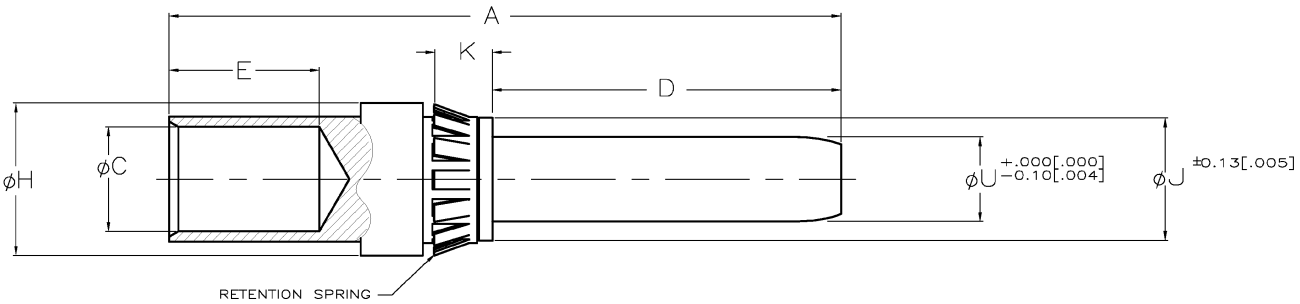


THIS DRAWING IS UNPUBLISHED. RELEASED FOR PUBLICATION  
 COPYRIGHT BY TYCO ELECTRONICS CORPORATION. ALL RIGHTS RESERVED.

LOC	DEF	REV	DESCRIPTION	DATE	BY	APP
FT	0	E	REVISED PER 0030-0149-02	8/23/02	SS	GS



	4	5.3	6.65	7.62	9.1	19.1	4.60	38.9	8	4 mm	193837-8
	[.157]	[.21]	[.262]	[.300]	[.36]	[.75]	[.181]	[1.53]			
	8	5.3	13.51	14.48	17.5	33	12.37	66.8	1/0	8 mm	193837-7
	8	5.3	13.51	14.48	14.2	33	9.91	63.5	2	8 mm	193837-6
	6	5.3	9.45	10.41	11.7	19.3	7.36	43.9	4	6 mm	193837-5
	6	5.3	9.45	10.41	9.4	19.3	5.97	41.7	6	6 mm	193837-4
	4	5.3	6.65	7.62	9.1	19.1	4.60	38.9	8	4 mm	193837-3
	4	5.3	6.65	7.62	9.1	19.1	3.68	38.9	10	4 mm	193837-2
	2	5.3	4.75	5.72	9.1	16.3	2.54	35.6	12/14	2 mm	193837-1
	[.079]	[.21]	[.187]	[.225]	[.36]	[.64]	[.105]	[1.40]			
	$\phi U$	K	$\phi J$	$\phi H$	E	D	$\phi C$	A	WIRE AWG	PIN SIZE	PART NO.

- NOTES:
- △ LUBRICATED AT ASSY
  - △ PRELIMINARY PART NO.
  - △ PIN FINISH: .200  $\mu$ IN MIN. THICK SILVER OVER .500  $\mu$ IN MIN THICK NICKEL

THIS DRAWING IS A CONTROLLED DOCUMENT.		DATE: 08-10-03	BY: [Signature]	TYCO ELECTRONICS CORPORATION Harrisburg, PA 17105
DIMENSIONS: INCHES	TOLERANCES UNLESS OTHERWISE SPECIFIED	DATE: 08-10-03	MT	NAME: ASSY, PIN, 2-8mm, CRIMP
0 P.L.C. ± .005	1 P.L.C. ± .005	PRODUCT SPEC	APPLIC. SPEC	SIZE: A2
2 P.L.C. ± .010	3 P.L.C. ± .010	WEIGHT	RESTRICTED TO	DATE CODE: 00779
4 P.L.C. ± .015	ANGLES ± .5°	CUSTOMER DRAWING	SCALE: 4:1	DRAWING NO: 193837
PINISH				SHEET 1 OF 1

CUSTOMER DRAWING

H:\dm\_mod\

193837

A

F