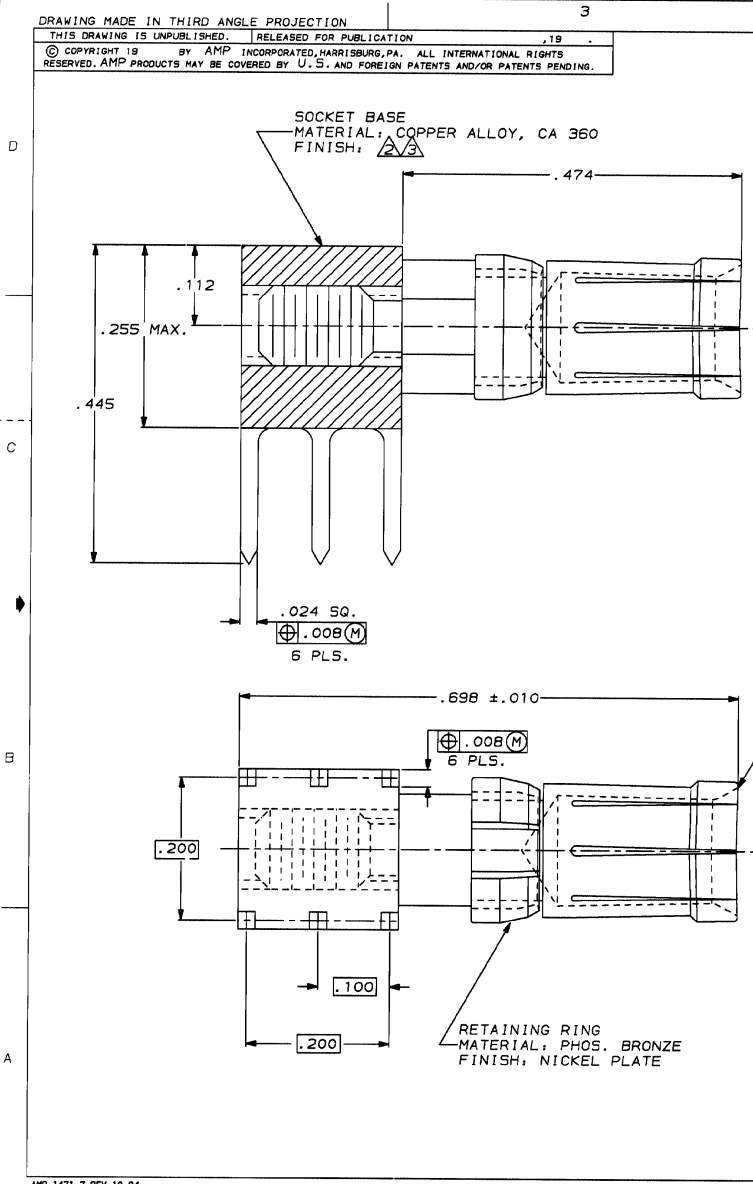


DRAWING MADE IN THIRD ANGLE PROJECTION

THIS DRAWING IS UNPUBLISHED. RELEASED FOR PUBLICATION
 © COPYRIGHT 19 BY AMP INCORPORATED, HARRISBURG, PA. ALL INTERNATIONAL RIGHTS RESERVED. AMP PRODUCTS MAY BE COVERED BY U.S. AND FOREIGN PATENTS AND/OR PATENTS PENDING.

LOC	DIST	P	F	ZONE	LTR	DESCRIPTION	DATE	APPROVED
	25			B		ECN AB1530, REDRAWN	8/8/98	RKS
				C		ECN AD2246	1/21/99	DLH
				D		ECN AD2557		DLH
				D1		SUPERSEDES #534137 ECN AD2665	7/11/99	DLH
				E		REV. PER ECN AD5734	08/09/01	TH



- Δ CONTACT FINISH : .000030 GOLD PLATE OVER .000050 THK. NICKEL UNDERPLATE .
- $\Delta/2$ SOCKET BASE FINISH : GOLD FLASH OVER .000050 NICKEL UNDERPLATE .
- $\Delta/3$ SOCKET BASE FINISH : .000150 MATTE TIN-LEAD OVER .000050 NICKEL UNDERPLATE .

Δ	532823-2
$\Delta/2$	532823-1
FINISH	PART NUMBER

UNLESS OTHERWISE SPECIFIED DIMENSIONS ARE IN INCHES TOLERANCES ON : 2 PL DEC ± - 3 PL DEC ± .005 ANGLES ± -	DR 1/19/88 D. HOFFMAN	AMP INCORPORATED Harrisburg, Pa. 17105	NAME		
	CHK 01/23/92 J.D. WEARY		RECEPTACLE ASSEMBLY, POWER CONTACT, HDi		
	APPD 01/23/92 J.D. WEARY		SIZE	FSCM NO	DRAWING NO
	MATERIAL		C	00779	532823
FINISH	APPLICATION SPEC	SCALE	10:1	SHEET 1 of 1	
Δ $\Delta/2$ $\Delta/3$	WGT				

AMP 1471-7 REV 10-84
 23 JAN 1992 09:37:13 AMP18235 4U10260-DEPT1322-AMP18235

CUSTOMER DRAWING