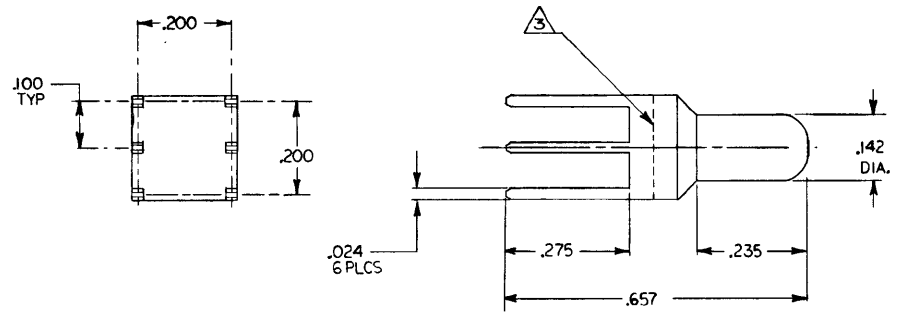


DRAWING MADE IN THIRD ANGLE PROJECTION

THIS DRAWING IS UNPUBLISHED. RELEASED FOR PUBLICATION 19
 © COPYRIGHT 19 BY AMP INCORPORATED, HARRISBURG, PA. ALL INTERNATIONAL RIGHTS RESERVED. AMP PRODUCTS MAY BE COVERED BY U.S. AND FOREIGN PATENTS AND/OR PATENTS PENDING.

REVISIONS						
P	F	ZONE	LTR	DESCRIPTION	DATE	APPROVED
✓	✓		B	REV PER ECN # AB2143	11-20-90	1+44 / J.C.
✓	✓		C	REVISED AD-3199	ms 3-89	



- △ COPPER ALLOY
- △ FINISH-.000030 MIN. GOLD OVER
.000050 -.000150 NICKEL UNDERPLATE
- △ SOLID OR WELD CONSTRUCTION AT AMP'S
OPTION, SOLDER TAILS MAY BE TIN PLATED.

△	532824-1
FINISH	PART NO

UNLESS OTHERWISE SPECIFIED DIMENSIONS ARE IN INCHES. TOLERANCES ON: DECIMALS ± .005 ANGLES ±	CONTRACT NO	AMP AMP INCORPORATED Harrisburg, Pa.		
	DR			
	CHK	NAME		
	APPR	HDI POWER CONTACT PIN		
MATERIAL	APPR	SIZE	FSCM NO	DRAWING NO
FINISH	APPR	B	00779	532824
	OTHER APPD	SCALE	5:1	SHEET

AMP 1470-15 REV 2-81

CUSTOMER DRAWING