

4

3

2

1

THIS DRAWING IS UNPUBLISHED.

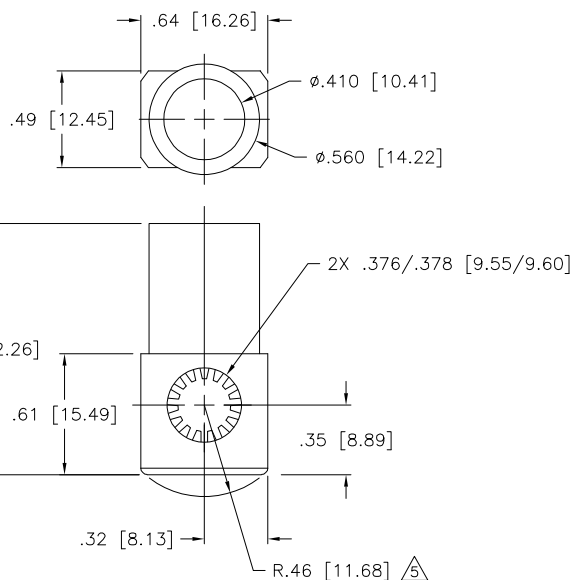
RELEASED FOR PUBLICATION

COPYRIGHT - BY TYCO ELECTRONICS CORPORATION. ALL RIGHTS RESERVED.

LOC
GP 00

REVISIONS

P	LTR	DESCRIPTION	DATE	DWN	APVD
	A	RELEASED	02MAR06	RG	MP



6. FOR TERMINATION REFER TO 1926079-1

5 ROTATION ARC.

4. FINISH:

SOCKET HOUSING - SILVER PLATED .000200 MIN THK.
OVER ELECTROLESS NICKEL PLATE .000040 MIN THK.

CROWN - GOLD PLATED .000030 MIN THK OVER
ELECTROLESS NICKEL PLATE .000040 MIN. THK

3. MATERIAL:

CROWN CONTACT - BERYLLIUM COPPER
SOCKET HOUSING - TELLURIUM COPPER ALLOY
INSULATOR - THERMOPLASTIC, 94V-0, COLOR PER TABLE

2. ITEMS PROVIDED TO THIS SPECIFICATION SHALL BE IDENTIFIED ON THE CONTAINER WITH THE FOLLOWING INFORMATION: PART NUMBER AND DATE CODE OF MANUFACTURE.

1. PART NUMBER CHANGES AND/OR DESIGN CHANGES AFFECTING ITEM INTERCHANGEABILITY REQUIRE PRIOR TYCO APPROVAL AND AUTHORIZATION BY REVISION TO THIS DRAWING.

BLUE	6648238-3
RED	6648238-2
BLACK	6648238-1
COLOR	PART NUMBER

THIS DRAWING IS A CONTROLLED DOCUMENT.		DWN R.GRZYBOWSKI 03MAR2006	Tyco Electronics Corporation Harrisburg, PA 17105-3608	
DIMENSIONS: INCHES		CHK M.PERCHERKE 02MAR06	NAME	
TOLERANCES UNLESS OTHERWISE SPECIFIED:		APVD M.PERCHERKE 02MAR06	JUMPER, CROWN SOCKET SIZE #2 WITH #2 CRIMP BARREL	
0 PLC ± -		PRODUCT SPEC	-	
1 PLC ± -		APPLICATION SPEC	-	
2 PLC ± .02		WEIGHT	-	
3 PLC ± .006		CUSTOMER DRAWING	-	
4 PLC ± -		SCALE	1:1	
ANGLES ± .5		SHEET	1 of 1	
FINISH		REV	A	
MATERIAL		RESTRICTED TO		

SIZE	CAGE CODE	DRAWING NO	RESTRICTED TO
A3	00779	C=6648238	-

RAPID LOCK ELCON

AMP 1470-19 REV 31MAR2000

03MAR06 9:26am us021428

H:\autocad\6648238_1A.DWG