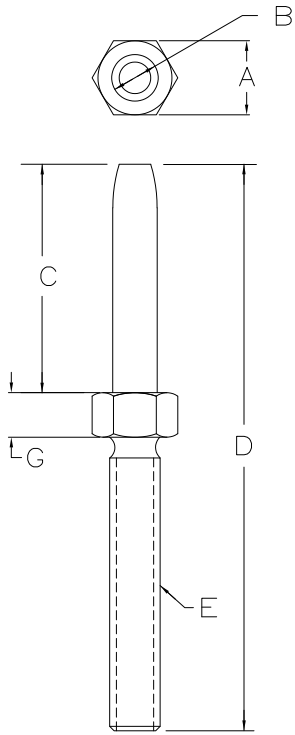


DRAWING MADE IN THIRD ANGLE PROJECTION
 THIS DRAWING IS UNPUBLISHED. RELEASED FOR PUBLICATION
 © COPYRIGHT 19 BY AMP INCORPORATED. ALL INTERNATIONAL RIGHTS RESERVED.

LOC	DIST	P	F	ZONE	LTR	DESCRIPTION	DATE	APPD
CH	11			A1		REV'D AND REDRAWN		
				B		ECN CH-0141		
				C		ECN OB20-1046-98		RAR
				D		ECN OB20-1046-98	14/AUG/98	RAR
				E		ECN OB20-1048-98	14/AUG/98	RAR
				F		REVISED PER ECO-09-020935	08SEP99	AEG



NOTE:
 ⚠ OBSOLETE PARTS: OBSOLETE CIS STREAMLINING PER D.RENAUD/D.SINISI

OBSOLETE	SUPERCEDED TO 192293-1											1-192161-1
	NOT AVAILABLE											1-192161-0
	NOT AVAILABLE											192161-9
	NOT AVAILABLE											192161-8
	NOT AVAILABLE											192161-7
OBSOLETE	10264	NICKEL	BRASS	5/16	3.8 [.15]	19.8 [.78]	51.6 [2.03]	1/4-28	6.0 [.236]			192161-6
	SUPERCEDED TO 192244-1											192161-5
	09038	SIL	BRASS	5/16	3.8 [.15]	19.8 [.78]	51.6 [2.03]	M6 X 1-6g	6.0 [.236]			192161-4
	10962	SIL	BRASS	1/4	3.8 [.15]	19.6 [.77]	33.8 [1.33]	10-32	4.0 [.157]			192161-3
	09027	SIL	BRASS	1/4	3.8 [.15]	19.6 [.77]	48.5 [1.91]	M5 X 0.8-6g	4.0 [.157]			192161-2
	09174	SIL	BRASS	1/4	3.8 [.15]	19.6 [.77]	48.5 [1.91]	10-32	4.0 [.157]			192161-1

HUGIN NO.	FINISH	MATERIAL	HEX SIZE A	HEX LENGTH G	PIN LENGTH C	TOT. LENGTH D	THREAD E	PIN DIAM B	PART NO
DO NOT SCALE PRINT. UNLESS SPECIFIED DIMENSIONS IN mm [INCHES] TOLERANCES ON : 1 PLC DEC ± 0.5 [.02] 2 PLC DEC ± 0.25 [.010] ANGLES ± -									
SEE TABLE					DR D. BABOW 10-17-91		AMP AMP Incorporated Harrisburg, PA 17105-3608		
SEE TABLE					APPD -		NAME		
SEE TABLE					PRODUCT SPEC		PIN, THREAD MOUNT		
SEE TABLE					APPLICATION SPEC		SIZE CAGE CODE DRAWING NO		
SEE TABLE					WEIGHT -		SCALE NTS SHEET 1 OF 1		

METRIC

AMP 1471-6 REV 9-89 Translated from 061031.020502 (YMMQD368MSS) from Computerized, Inc., Medium Revision 12.2.97

CUSTOMER DRAWING