

4

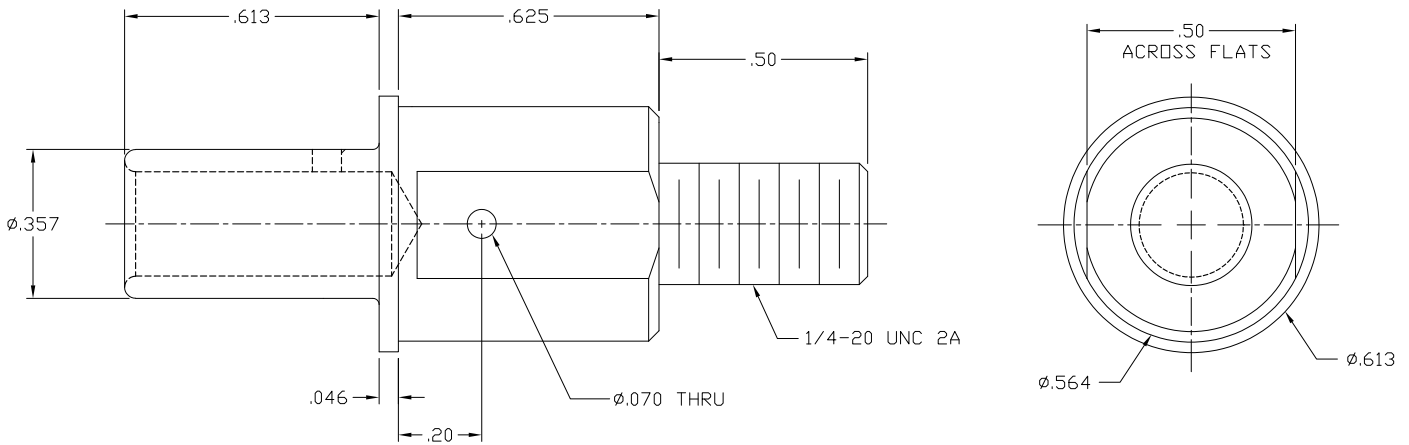
3

2

1

THIS DRAWING IS UNPUBLISHED. RELEASED FOR PUBLICATION
 © COPYRIGHT - BY TYCO ELECTRONICS CORPORATION. ALL RIGHTS RESERVED.

LOC	DIST	REVISIONS					
GP	00	P	LTR	DESCRIPTION	DATE	DWN	APVD
		C		REV PER ECO-08-000391	8JAN2008	RG	DO



3. FINISHES:
 PIN CONTACT: SILVER PLATE, .000200 MIN THICK
 OVER NICKEL, .000050 MIN THICK
2. MATERIAL:
 PIN CONTACT: COPPER ALLOY.
1. PART NUMBER CHANGES AND OR DESIGN CHANGES AFFECTING
 ITEM INTERCHANGEABILITY REQUIRE PRIOR TYCO ELECTRONICS
 APPROVAL AND AUTHORIZATION BY REVISION TO THIS DRAWING.

AS SHOWN	1766270-1
DESCRIPTION	PART NUMBER

THIS DRAWING IS A CONTROLLED DOCUMENT.		DWN	3/24/06		Tyco Electronics		Tyco Electronics Corporation		
DIMENSIONS: INCHES		CHK	RFA/GRZYBOWSKI		NAME		Harrisburg, PA 17105-3608		
TOLERANCES UNLESS OTHERWISE SPECIFIED:		APVD	S.FLICKINGER		PRODUCT SPEC		CONTACT, PIN, SIZE NO. 0		
0 PLC ± -		APPLICATION SPEC	-		DRAWING NO		1/4-20 EXT THD.		
1 PLC ± -		WEIGHT	-		SIZE		DOUBLE CROWN, DRAWERS		
2 PLC ± .02		CUSTOMER DRAWING	-		CAGE CODE		RESTRICTED TO		
3 PLC ± .010		SCALE	4:1		DRAWING NO		-		
4 PLC ± -		SHEET	1 OF 1		DRAWING NO		-		
ANGLES ± .5		REV	C		DRAWING NO		-		
FINISH		-		-		-		-	
MATERIAL		-		-		-		-	
-		-		-		-		-	