

4

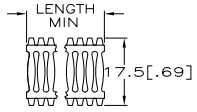
3

2

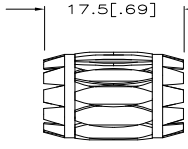
1

THIS DRAWING IS UNPUBLISHED. RELEASED FOR PUBLICATION  
 BY TYCO ELECTRONICS CORPORATION. ALL RIGHTS RESERVED.

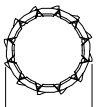
LOC	DIST	REVISIONS					
FT	0	F	LR	DESCRIPTION	DATE	BY	APPD
		P1		REVISED PER ECO-09-020935		OSSEPOB	KK AEG



STYLE C  
 (STRIP)



STYLE B



- NOTES:
1. FINISH: GOLD PLATE 10uIN MINIMUM.
  2. FINISH: SILVER PLATE 200 uIN MINIMUM.
  3. FINISH: NICKEL PLATE 40 uIN MINIMUM.
  4. FINISH: NICKEL PLATE 100 uIN MINIMUM.
  - 5.
  - 6.
  - 7.
  8. NESTED AND WELDED 13 AND 14 LOUVERED BAND.
  - 9.
  - 10.
  11. PLATING NOTES ARE TO BE INTERPRETED AS FOLLOWS:  
 6-8 AS 6 OVER 8.
  12. PRODUCT IS SOLD BY THE FOOT. MINIMUM ORDER LENGTH IS 3 FEET.

- 13 PRELIMINARY PART NUMBER.  
 14 OBSOLETE PARTS: OBSOLETE CIS STREAMLINING PER D.RENAUD/D.SINISI

QTY	DESCRIPTION	UNIT	PLATING	FINISH	REF	DATE	BY	APPD
13	OBSOLETE	[.72]	B	[.050]	BeCu	19.7[.775]		
		[.72]	B	[.052]	BeCu	19.7[.775]		
			C	[.052]	BeCu			
		[.50]	A	B	--	BeCu	12.7[.500]	
		1.42	B	[.048]	BeCu	38.1[1.500]		
		1.04	B	[.048]	BeCu	28.5[1.121]		
		.82	B	[.048]	BeCu	22.2[.875]		
		1.42	B	[.050]	BeCu	38.1[1.500]		
		1.71	B	[.050]	BeCu	44.4[1.750]		
		1.42	B	[.048]	BeCu	38.1[1.500]		
		1.39	B	[.050]	BeCu	34.9[1.375]		
		1.32	B	[.050]	BeCu	34.9[1.375]		
		1.07	B	[.050]	BeCu	28.6[1.129]		
		1.04	B	[.048]	BeCu	28.5[1.121]		
		1.00	B	[.050]	BeCu	27.1[1.068]		
		.94	B	[.052]	BeCu	25.4[1.000]		
		.94	B	[.050]	BeCu	25.4[1.000]		
		.94	B	[.050]	BeCu	25.4[1.000]		
		1.70	B	[.050]	BeCu	22.2[.875]		
		.78	B	[.050]	BeCu	22.2[.875]		
		.81	B	[.050]	BeCu	22.2[.875]		
		.81	B	[.048]	BeCu	22.2[.875]		
		.69	B	[.052]	BeCu	19[.750]		
		.65	B	[.050]	BeCu	17.4[.687]		
		.56	B	[.050]	BeCu	15.9[.625]		
		.53	B	[.052]	BeCu	15.7[.620]		
			C	[.050]	BeCu			
		.53	B	[.050]	BeCu	15.7[.620]		
		.53	B	[.050]	BeCu	15.7[.620]		
		.50	B	[.050]	BeCu	12.7[.500]		
		.50	B	[.050]	BeCu	12.7[.500]		
		.50	B	[.050]	BeCu	12.7[.500]		
		.50	B	[.046]	BeCu	12.7[.500]		
		.43	B	[.050]	BeCu	11.1[.437]		
		.34	B	[.050]	BeCu	7.9[.312]		
		.30	B	[.050]	BeCu	7.9[.312]		
			C	[.050]	BeCu			
			C	[.050]	BeCu			
			C	[.050]	BeCu			
			C	[.050]	BeCu			
			C	[.046]	BeCu			
			C	[.046]	BeCu			

THIS DRAWING IS A CONTROLLED DOCUMENT.

DIMENSIONS: MM	TO DIMENSIONS UNLESS OTHERWISE SPECIFIED	DRN: S. JURICH 25JAN01	CHK: G. STEINHAUER 25JAN01	APPD: G. STEINHAUER 25JAN01	NAME: Tyco Electronics Corporation
MATERIAL: SEE TABLE	FINISH: SEE TABLE	LENGTH: 4.90 IN	PLATING: 2-3	NUM LOUVER: 49	MAT'L THK: 0.15
					REF: 01038
					PART NUMBER: 192007

CONTACT BAND, MALE  
 SIZE: A2  
 CASE CODE: 00779  
 DRAWING NO: 192007  
 CUSTOMER DRAWING  
 SCALE: NTS  
 SHEET: 1 OF 1  
 REV: P1