

4

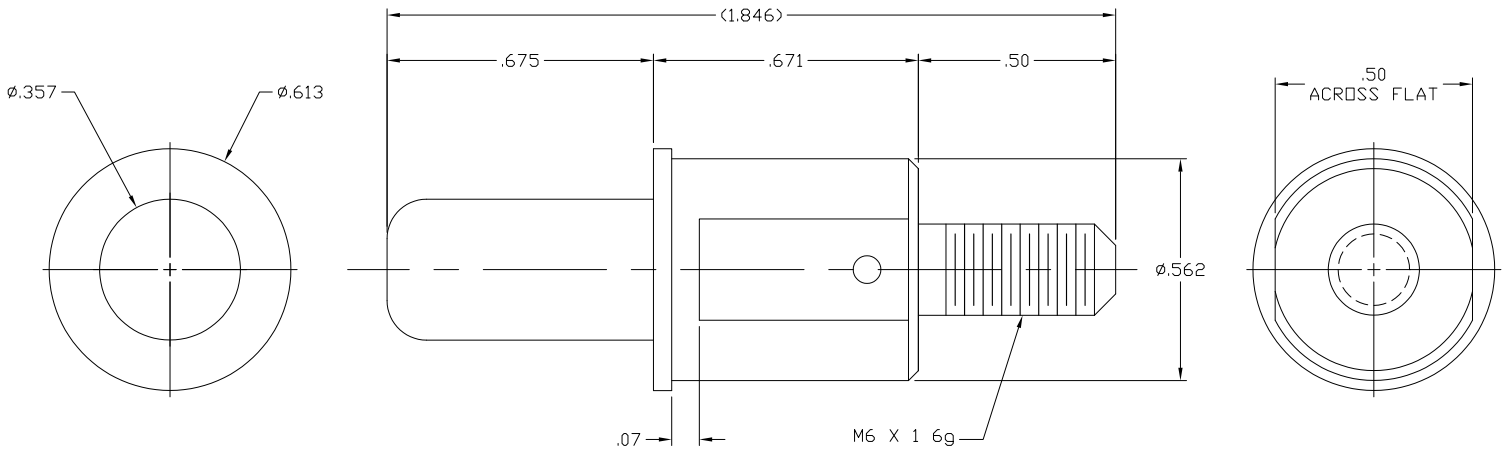
3

2

1

THIS DRAWING IS UNPUBLISHED. RELEASED FOR PUBLICATION  
 © COPYRIGHT - BY TYCO ELECTRONICS CORPORATION. ALL RIGHTS RESERVED.

LOC	DIST	REVISIONS					
GP	00	P	LTR	DESCRIPTION	DATE	DWN	APVD
		B		REV PER ECO-07-018527	14AUG07	RG	DO



1. PART NUMBER CHANGES AND OR DESIGN CHANGES AFFECTING ITEM INTERCHANGEABILITY REQUIRE PRIOR TYCO ELECTRONICS APPROVAL AND AUTHORIZATION BY REVISION TO THIS DRAWING.
2. ITEMS PROVIDED TO THIS SPECIFICATION SHALL BE IDENTIFIED ON THE CONTAINER WITH THE FOLLOWING INFORMATION:  
PART NUMBER & DATE CODE OF MANUFACTURE.
3. MATERIAL: COPPER ALLOY.
4. FINISH: SILVER PLATED, .000200 MIN THICK,  
OVER ELECTROLESS NICKEL PLATED, .000050 MIN THICK.

AS SHOWN	1766231-1
DESCRIPTION	PART NUMBER

THIS DRAWING IS A CONTROLLED DOCUMENT.		DWN	14AUG2007	Tyco Electronics		Tyco Electronics Corporation Harrisburg, PA 17105-3608																			
DIMENSIONS: INCHES		CHK	-	NAME		CONTACT, PIN, SIZE #0 M6 X 1 6g EXTERNAL THREAD DRAWER																			
TOLERANCES UNLESS OTHERWISE SPECIFIED:		APVD	14AUG07	PRODUCT SPEC		RESTRICTED TO																			
<table border="1"> <tr><td>0</td><td>PLC</td><td>± -</td></tr> <tr><td>1</td><td>PLC</td><td>± -</td></tr> <tr><td>2</td><td>PLC</td><td>± .02</td></tr> <tr><td>3</td><td>PLC</td><td>± .010</td></tr> <tr><td>4</td><td>PLC</td><td>± -</td></tr> <tr><td colspan="2">ANGLES</td><td>± 5</td></tr> </table>		0	PLC	± -	1	PLC	± -	2	PLC	± .02	3	PLC	± .010	4	PLC	± -	ANGLES		± 5	APPLICATION SPEC		SIZE		CAGE CODE	
0	PLC	± -																							
1	PLC	± -																							
2	PLC	± .02																							
3	PLC	± .010																							
4	PLC	± -																							
ANGLES		± 5																							
MATERIAL		WEIGHT		A3		00779																			
FINISH		CUSTOMER DRAWING		DRAWING NO		C=1766231																			
				SCALE		SHEET																			
				1:1		1 of 1																			
						REV B																			

AMP 1470-19 REV 31MAR2000