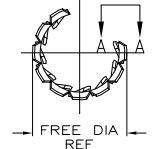
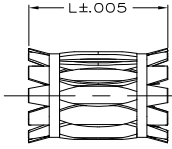
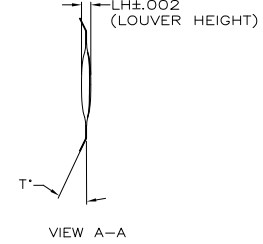


THIS DRAWING IS UNPUBLISHED. RELEASED FOR PUBLICATION
 © COPYRIGHT BY TYCO ELECTRONICS CORPORATION. ALL RIGHTS RESERVED.

LOC	DIST	REVISIONS					
FT	0	P	LR	DESCRIPTION	DATE	MIN	APD
		F2		REVISED PER ECO-06-27030	11/17/06	SS	GS
		F3		REVISED PER ECO-09-020935		OBSEPO9	KK AEG

T	L	LH	(FREE DIA)	MAT'L (NOTE)	MATING PIN REF	PLATING NOTE NO.	NUM LOUV	MAT'L THK	REF	PART NO.	
15°	.690	.050	[.0.69]	6	12.7[.500]	9-2	16	0.15[.006]	--	5-192033-3	△
15°	.690	.052	[.1.18]	6	--	PREPL	32	0.20[.008]	--	5-192033-2	
15°	.690	.052	[.4.00]	7	--	5-2	150	0.20[.008]	--	5-192033-1	△
45°	.700	.052	[.95]	7	--	5-2	25	0.20[.008]	--	5-192033-0	
15°	.69	.052	[.90]	7	--	5-2	22	0.20[.008]	--	4-192033-9	
15°	.69	.052	[.55]	7	--	5-2	13	0.20[.008]	--	4-192033-8	
15°	.69	.050	[.3.00]	7	26.21[1.032]	UNPL	41	0.10[.004]	--	4-192033-7	△
15°	.69	.050	[.99]	7	20.32[.800]	UNPL	26	0.15[.006]	--	4-192033-6	△
15°	.69	.050	[.1.35]	7	28.57[1.125]	5	35	0.10[.004]	--	4-192033-5	
45°	.70	.050	[.4.00]	7	44.45[1.750]	5	55	0.15[.006]	--	4-192033-4	
45°	.70	.050	[.95]	7	20.06[.790]	--	25	0.15[.006]	01321	4-192033-3	
45°	.70	.050	[.3.00]	7	34.92[1.375]	5	44	0.15[.006]	01230	4-192033-2	
15°	.69	.050	[.3.00]	7	34.92[1.375]	5	44	0.15[.006]	01229	4-192033-1	
15°	.69	.050	[.3.00]	7	34.92[1.375]	5	44	0.10[.004]	01199	4-192033-0	
15°	.69	.050	[.3.00]	7	33.40[1.315]	5	42	0.15[.006]	01233	3-192033-9	△
									01306	3-192033-8	
15°	.69	.050	[.3.00]	7	32.25[1.270]	4-2	41	0.15[.006]	01262	3-192033-7	△
15°	.69	.050	[.3.00]	7	32.25[1.270]	5	41	0.15[.006]	01260	3-192033-6	
15°	.69	.050	[.1.02]	7	22.22[.875]	UNPL	27	0.15[.006]	--	3-192033-5	
15°	.69	.050	[.1.50]	7	31.75[1.250]	5	39	0.15[.006]	01232	3-192033-4	
15°	.69	.050	[.3.00]	7	30.15[1.187]	5	L	0.15[.006]	01192	3-192033-3	
15°	.69	.050	[.2.50]	7	26.21[1.032]	4-2	32	0.10[.004]	01261	3-192033-2	△
									--	3-192033-1	△
15°	.69	.050	[.2.50]	7	26.21[1.032]	5	32	0.10[.004]	01185	3-192033-0	△
15°	.69	.050	[.2.50]	7	26.21[1.032]	UNPL	32	0.10[.004]	01265	2-192033-9	
45°	.70	.050	[.1.18]	7	25.40[1.000]	5	32	0.15[.006]	01179	2-192033-8	△
15°	.69	.050	[.1.15]	8	25.40[1.000]	UNPL	31	0.15[.006]	01269	2-192033-7	
15°	.69	.050	[.1.15]	7	25.40[1.000]	5	31	0.15[.006]	01175	2-192033-6	
									01174	2-192033-5	△
15°	.69	.050	[.1.15]	7	24.13[.950]	UNPL	31	0.15[.006]	01173	2-192033-4	△
15°	.69	.050	[.1.11]	7	23.36[.920]	5	30	0.15[.006]	--	2-192033-3	△
15°	.69	--	--	--	--	--	--	--	01254	2-192033-2	△
15°	.69	.052	[.1.05]	7	22.22[.875]	5	28	0.20[.008]	01168	2-192033-1	△
15°	.69	.050	[.1.05]	7	22.22[.875]	5	28	0.15[.006]	01167	2-192033-0	
15°	.69	.050	[.1.02]	7	22.22[.875]	3-2	27	0.15[.006]	01310	1-192033-9	
									01250	1-192033-8	SUPERSEDED △
									01251	1-192033-7	△
									01253	1-192033-6	△
15°	.69	.050	[.2.00]	7	22.22[.875]	5	27	0.10[.004]	01257	1-192033-5	△
15°	.69	.050	[.1.02]	7	22.22[.875]	UNPL	27	0.10[.004]	01256	1-192033-4	△
									01267	1-192033-3	△
									01204	1-192033-2	△
									01166	1-192033-1	△
15°	.69	.050	[.1.02]	7	21.38[.842]	5	27	0.15[.006]	01164	1-192033-0	
15°	.69	.050	[.99]	7	21.38[.842]	5	26	0.15[.006]	01287	192033-9	△
15°	.69	.050	[.95]	7	20.62[.812]	5	25	0.15[.006]	01252	192033-8	△
									01239	192033-7	△
									01161	192033-6	△
									01314	192033-5	△
									01156	192033-4	△
									01155	192033-3	△
									01224	192033-2	△
									01249	192033-1	△



1. FINISH: GOLD PLATE 10uIN MIN THICK.
2. FINISH: NICKEL PLATE 40uIN MIN THICK.
3. FINISH: GOLD PLATE 30uIN MIN THICK.
4. FINISH: SILVER PLATE 500uIN MIN THICK.
5. FINISH: SILVER PLATE 200uIN MIN THICK.
6. PLATING NOTES ARE TO BE INTERPRETED AS FOLLOWS, 4-2 AS 4 OVER 2.
7. MATERIAL: CDA172, BeCu.
8. MATERIAL: STAINLESS STEEL.
9. FINISH: GOLD PLATE 50uIN MIN THICK.
- △ 10. PRELIMINARY PART NUMBER.
- △ 11. OBSOLETE PARTS: OBSOLETE CIS STREAMLINING PER D.RENAUD/D.SINISI

THIS DRAWING IS A CONTROLLED DOCUMENT. DRN: RJA JAYNE 07-24-92

TYCO ELECTRONICS Corporation
 Harrisburg, PA 17105-3608

CONTACT BAND, FEMALE

DIMENSIONS: INCHES	PLATING: 0 PL C 1 PL C 2 PL C 3 PL C 4 PL C ANGLES FINISH	APPLIC. SPEC: --	SIZE: A2	CAGE CODE: 00779	DRAWING NO: C=192033	RESTRICTED TO: --
SEE TABLE	SEE TABLE	WEIGHT: --	CUSTOMER DRAWING		SCALE: NTS	SHEET: 1 of 1