

4

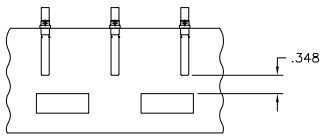
3

2

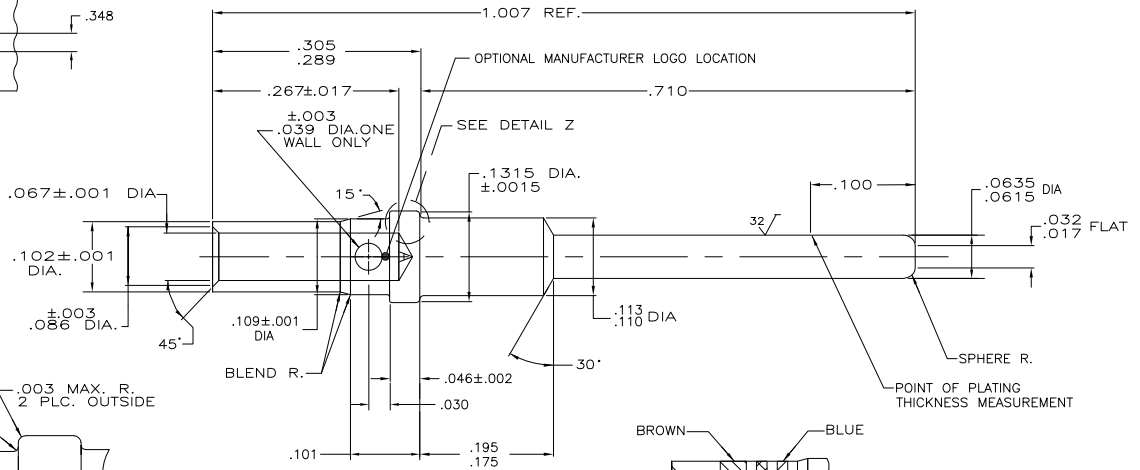
1

THIS DRAWING IS UNPUBLISHED. RELEASED FOR PUBLICATION  
 © COPYRIGHT BY TYCO ELECTRONICS CORPORATION. ALL RIGHTS RESERVED.

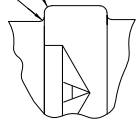
LOC	DIST	REVISIONS		
P	LTR	DESCRIPTION	DATE	MIN
DF	A3			
P		REV PER EC 0414-0154-04	25JAN06	TK CT



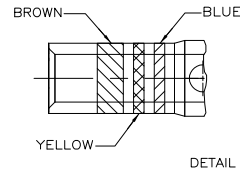
DETAIL A  
TAPE MOUNTED  
ASSEMBLY  
(-4 ONLY)



.003 MAX. R.  
2' PLC. INSIDE



DETAIL Z  
SCALE 20:1



DETAIL

1. DIMENSIONS AFTER PLATING.

WHEN ORDERING CONTACT ON TAPE, ORDER BY THE TAPE NUMBER PLUS THE PACKAGING CODE AS FOLLOWS:

- FOR USE WITH AMP TAPETRONIC, PNEUMATIC TOOL—  
A. 1000 PARTS TO A BOX. ADD PACKAGING CODE: 1MBOX
- FOR USE WITH 418 INDENT STRIPPER CRIMPER—  
A. 1000 PARTS TO A BOX. ADD PACKAGING CODE: 1MBOX  
B. 5000 PARTS TO A REEL. ADD PACKAGING CODE RMREEL

- 204978-2 1. SAME AS -1 EXCEPT:  
2. FINISH: PLATED GOLD PER MIL-6-45204  
OVERE NICKEL PER QQ-N-290
- 204978-3 1. AS SHOWN
- OBSOLETE 204978-4 1. SAME AS -3 EXCEPT:  
2. MOUNTED ON MYLAR TAPE
- OBSOLETE 204978-5 1. SAME AS -3 EXCEPT:  
2. GRAPHITE COATED  
3. NO COLOR BANDS
- OBSOLETE 204978-6 1. SAME AS -3 EXCEPT:  
2. COLOR CODE TO BE SINGLE BLUE BAND
- OBSOLETE 204978-8 1. SEE SHEET 2 OF 2

THIS DRAWING IS A CONTROLLED DOCUMENT.		DATE	2-10-93	Tyco Electronics Corporation Harrisburg, PA 17105-3608
DIMENSIONS: INCHES		DESIGNED BY	J. LINDERMAN	
MATERIAL: SEE DASH NO.		CHECKED BY	A. SHARPE	PIN CONTACT, SIZE 16, ARINC 600 SIZE: 00779C-204978 SCALE: 10:1 SHEET 1 of 1 REV P
FINISH:		DATE	2-24-93	
APPLICATION SPEC:		PRODUCT SPEC:		RESTRICTED TO:

AMP 1471-9 REV 31MM2000

25JAN2006 8:12am US071105 H:\dmmod\204978\_1--c.dwg

204978

B

A