

4

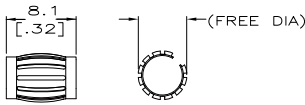
3

2

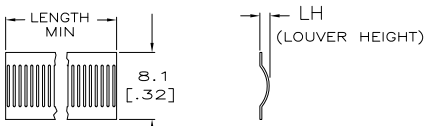
1

THIS DRAWING IS UNPUBLISHED. RELEASED FOR PUBLICATION
 BY TYCO ELECTRONICS CORPORATION. ALL RIGHTS RESERVED.

LOC	DIST	REVISIONS					
FT	0	F	LR	DESCRIPTION	DATE	BY	APP'D
		R		REVISE PER ECN 0038-0945-04	10/25/04	SS	GS
		R1		REVISED PER ECO-09-020935	10SEP09	KK	AEG



STYLE B
(MALE)



STYLE C
(STRIP)

1. FINISH-SILVER PLATE 200 μ IN MIN THICK.
2. FINISH-NICKEL PLATE 40 μ IN MIN THICK.
3. FINISH-GOLD PLATE 10 μ IN MIN THICK.
4. FINISH-GOLD PLATE 50 μ IN MIN THICK.
5. FINISH-CADMIUM PLATE 300 μ IN MIN THICK.
6. FINISH-NICKEL PLATE 100 μ IN MIN THICK.
7. FINISH-TIN PLATE 300 μ IN MIN THICK.
- 8.
- 9.
- 10.
11. PLATING NOTES ARE TO BE INTERPRETED AS FOLLOWS, 6-8 AS 6 OVER 8.
12. PRODUCT IS SOLD BY THE FOOT.
13. 12 FOOT STRIP WOUND TO A ONE INCH INSIDE DIAMETER.
14. MATERIAL-BeCu (CDA172).
15. MATERIAL-STAINLESS STEEL.
16. CUT LENGTH 508.0 [20.00] APPROXIMATELY 714 LOUVERS.

- 17 BAND WIDTH .310 \pm .005 FOR P/N 6-192042-6.
- 18 FINISH - GOLD PLATE 30 μ IN MIN THICK.
- 19 OVERLAPPED WITH GAP.
- 20 OBSOLETE PARTS: OBSOLETE CIS STREAMLINING PER D.RENAUD/D.SINISI

QTY	DESCRIPTION	UNIT	DATE	BY	APP'D								
OBSOLETE	.022	--	B	[.40]	14	9.5	[.375]	36	3-2	0.20	[.008]	04133	4-192042-7
OBSOLETE	.022	--	B	[.40]	14	9.5	[.375]	36	1-2	0.15	[.006]	04054	4-192042-6
OBSOLETE	.022	--	B	[.40]	14	9.5	[.375]	36	5	0.15	[.006]	04100	4-192042-5
OBSOLETE	.022	--	B	[.40]	14	9.5	[.375]	36	UNPL	0.15	[.006]	04156	4-192042-4
OBSOLETE	.022	--	B	[.40]	14	9.5	[.375]	36	UNPL	0.15	[.006]	04101	4-192042-3
OBSOLETE	.022	--	B	[.40]	14	9.5	[.375]	36	UNPL	0.15	[.006]	04132	4-192042-2
OBSOLETE	.024	--	B	[.30]	14	7.1	[.280]	26	3-2	0.15	[.006]	04131	4-192042-1
OBSOLETE	.024	--	B	[.30]	14	7.1	[.280]	26	UNPL	0.15	[.006]	04048	4-192042-0
OBSOLETE	.024	--	B	[.30]	14	7.1	[.280]	26	UNPL	0.15	[.006]	04173	3-192042-9
OBSOLETE	.026	--	B	[.23]	14	5.5	[.216]	19	6	0.20	[.008]	04043	3-192042-8
OBSOLETE	.026	--	B	[.23]	14	5.5	[.216]	19	3-2	0.20	[.008]	04135	3-192042-7
OBSOLETE	.026	--	B	[.23]	14	5.5	[.216]	19	1-2	0.20	[.008]	04039	3-192042-6
OBSOLETE	.026	--	B	[.23]	14	5.5	[.216]	19	1-2	0.20	[.008]	04134	3-192042-5
OBSOLETE	.032	--	B	[.20]	14	4.7	[.185]	15	3-2	0.15	[.006]	04034	3-192042-4
OBSOLETE	.032	--	B	[.20]	14	4.7	[.185]	15	3-2	0.15	[.006]	04033	3-192042-3
OBSOLETE	.032	--	B	[.20]	14	4.7	[.185]	15	1-2	0.15	[.006]	04032	3-192042-2
OBSOLETE	.032	--	B	[.20]	14	4.7	[.185]	15	UNPL	0.15	[.006]	04063	3-192042-1
OBSOLETE	.022	--	B	[.17]	14	4.0	[.157]	13	4-2	0.15	[.006]	04130	3-192042-0
OBSOLETE	.022	--	B	[.17]	14	4.0	[.157]	13	3-2	0.15	[.006]	04155	2-192042-9
OBSOLETE	.022	--	B	[.17]	14	4.0	[.157]	13	3-2	0.15	[.006]	04088	2-192042-8
OBSOLETE	.022	--	B	[.17]	14	4.0	[.157]	13	6	0.15	[.006]	04087	2-192042-7
OBSOLETE	.022	--	B	[.17]	14	4.0	[.157]	13	1-2	0.15	[.006]	04089	2-192042-6
OBSOLETE	.022	--	B	[.17]	14	4.0	[.157]	13	UNPL	0.15	[.006]	04089	2-192042-5
OBSOLETE	.022	--	B	[.15]	14	3.5	[.138]	12	3-2	0.15	[.006]	04026	2-192042-4
OBSOLETE	.022	--	B	[.14]	14	3.0	[.118]	10	3-2	0.15	[.006]	04022	2-192042-3
OBSOLETE	.022	--	B	[.14]	14	3.0	[.118]	10	UNPL	0.15	[.006]	04021	2-192042-2
OBSOLETE	.022	--	B	[.13]	14	2.8	[.110]	10	3-2	0.12	[.005]	04018	2-192042-1
OBSOLETE	.022	--	B	[.13]	14	2.5	[.098]	9	3-2	0.15	[.006]	04016	2-192042-0
OBSOLETE	.026	--	B	[.13]	14	2.3	[.091]	9	3-2	0.20	[.008]	04014	1-192042-9
OBSOLETE	.022	--	B	[.11]	14	2.0	[.080]	6	6	0.15	[.006]	04012	1-192042-8
OBSOLETE	.022	--	B	[.11]	14	2.0	[.080]	6	3-2	0.15	[.006]	04011	192042-7
OBSOLETE	.026	--	B	[.11]	14	2.0	[.080]	6	3-2	0.12	[.005]	04152	1-192042-6
OBSOLETE	.026	--	B	[.11]	14	2.0	[.080]	6	6	0.12	[.005]	04171	1-192042-5
OBSOLETE	.026	--	B	[.11]	14	2.0	[.080]	6	6	0.12	[.005]	04219	1-192042-4
OBSOLETE	.026	--	B	[.11]	14	2.0	[.080]	6	UNPL	0.12	[.005]	04153	1-192042-3
OBSOLETE	.020	--	B	[.10]	14	2.0	[.080]	6	6	0.10	[.004]	04150	1-192042-2
OBSOLETE	.020	--	B	[.10]	14	2.0	[.080]	6	UNPL	0.10	[.004]	04151	1-192042-1
OBSOLETE	.026	NOTE 13	C	--	14	--	--	3-2	0.12	[.005]	04175	1-192042-0	
OBSOLETE	.028	NOTE 12	C	--	14	--	--	3-2	0.20	[.008]	04127	192042-9	
OBSOLETE	.028	NOTE 12	C	--	14	--	--	1-2	0.20	[.008]	04160	192042-8	
OBSOLETE	.028	NOTE 12	C	--	14	--	--	UNPL	0.20	[.008]	04161	192042-7	
OBSOLETE	.026	NOTE 12	C	--	14	--	--	3-2	0.15	[.006]	04003	192042-6	
OBSOLETE	.026	NOTE 12	C	--	14	--	--	1-2	0.15	[.006]	04217	192042-5	
OBSOLETE	.026	NOTE 12	C	--	14	--	--	UNPL	0.15	[.006]	04085	192042-4	
OBSOLETE	.026	NOTE 12	C	--	14	--	--	1-2	0.12	[.005]	04141	192042-3	
OBSOLETE	.026	NOTE 12	C	--	14	--	--	UNPL	0.12	[.005]	--	192042-2	
OBSOLETE	.016	NOTE 12	C	--	15	--	--	UNPL	0.12	[.005]	04181	192042-1	

THIS DRAWING IS A CONTROLLED DOCUMENT.		DATE: 08-12-92	BY: SA JAYNE
DIMENSIONS: mm		DATE: 07-21-93	BY: J. TURNER
TOLERANCES UNLESS OTHERWISE SPECIFIED:		Tyco Electronics Corporation Harrisburg, Pa 17105-3608	
0 PLG ± .01	1 PLG ± .01	CONTACT BAND, MALE	
2 PLG ± .01	3 PLG ± .01	APPLICATION SPEC: --	
4 PLG ± .01	ANGLES ± .01	SIZE: A2	
MATERIAL: FINISH		CASE CODE: C=192042	
CUSTOMER DRAWING		RESTRICTED TO: --	
SCALE: 1:1		SHEET: 1 OF 2	
REV: R1			

192042

A

