

**Specification Status: Released**

**Maximum Electrical Rating**

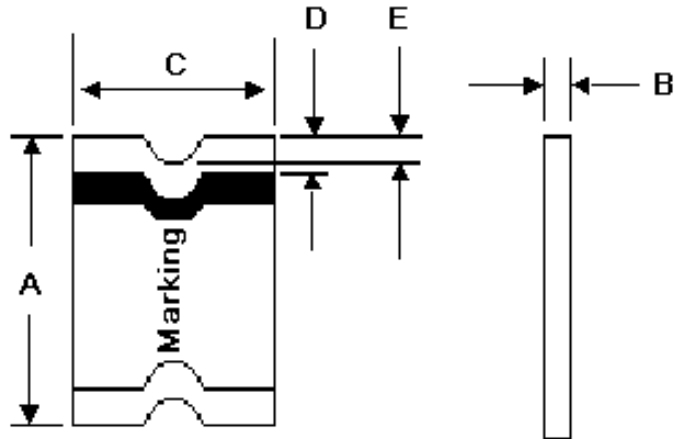
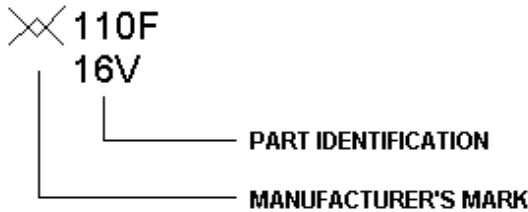
**Voltage: 16V<sub>DC</sub>**

**Short Circuit Current: 100A**

**Notes:**

- 1. All terminations are tin plated.
- 2. Drawing not to scale

**Marking:**



**TABLE I. DIMENSIONS:**

	A		B		C		D		E
	MIN	MAX	MIN	MAX	MIN	MAX	MIN	MAX	MIN
mm:	4.37	4.83	0.28	0.48	3.07	3.41	0.25	0.95	0.20
in:	(0.172)	(0.190)	(0.011)	(0.019)	(0.121)	(0.134)	(0.010)	(0.040)	(0.008)

**TABLE II. PERFORMANCE RATINGS:**

CURRENT RATINGS**						TIME TO TRIP**	RESISTANCE VALUES		TRIPPED-STATE POWER DISSIPATION**
AMPERES AT 0°C		AMPERES AT 20°C		AMPERES AT 60°C		SECONDS AT 20°C, 8.0A MAX	OHMS AT 20°C		WATTS AT 20°C, 16V MAX
HOLD	TRIP	HOLD	TRIP	HOLD	TRIP		MIN	MAX*	
1.3	2.5	1.1	2.2	0.75	1.4	0.3	0.06	0.18	0.8

\* Maximum resistance is measured 1 hour after reflow

\*\* Values Specified were determined using PCB's with 0.030"X1.5 ounce copper traces.

Agency Recognitions:

UL, CSA, TÜV

Reference Documents:

PS300

Precedence:

This specification takes precedence over documents referenced herein.

Effectivity:

Reference documents shall be the issue in effect on the date of invitation for bid.

CAUTION:

Operation beyond the rated voltage or current may result in rupture, electrical arcing or flame.

**Materials Information**

**ROHS Compliant**

Directive 2002/95/EC  
Compliant

**ELV Compliant**

Directive 2000/53/EC  
Compliant

**Pb-Free**



**Halogen Free\***



\* Halogen Free refers to: Br≤900ppm, Cl≤900ppm, Br+Cl≤1500ppm

© 2006, 2009 Tyco Electronics Corporation. All rights reserved.