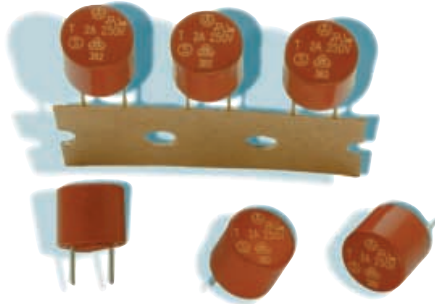
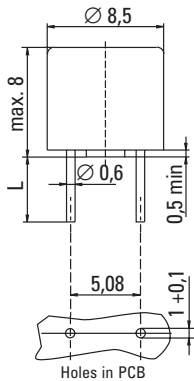


# TR5® / No. 384



### Dimensions (mm)



Long Leads (L=18.8mm)



## IEC 60127-3/IV, 250V, T

### Time-Current Characteristic

Time Lag (T)

### Standard

IEC 60127-3/IV

### Approvals

VDE: License No. 137847  
 SEMKO: Certificate No. 0135203 / 300454  
 cULus Recognized: File No. E 67006  
 METI: File No. 32-1926, JET0381-31007-1001  
 CCC: pending

### Features

- Enhanced breaking capacity
- Lead-Free construction
- Suitable for Lead-Free soldering
- Reduced PCB space requirements
- Low internal resistance
- Shocksafe casing
- Vibration resistant

### WebLinks

#### Data Sheet - latest version

[www.wickmannusa.com/products/384.pdf](http://www.wickmannusa.com/products/384.pdf)

#### Approval Certificates

[www.wickmannusa.com/approvals](http://www.wickmannusa.com/approvals)

#### Time-Current Curve

[www.wickmannusa.com/itcurves](http://www.wickmannusa.com/itcurves)

#### Packaging

[www.wickmannusa.com/pack](http://www.wickmannusa.com/pack)

#### For Application Information refer to

[www.wickmannusa.com/download/fuseology.pdf](http://www.wickmannusa.com/download/fuseology.pdf)

## Specifications

### Packaging Code and Info

000: Tape/Ampopack (1000 pcs.)

### Materials

Base/Cap: Brown Thermoplastic  
 Polyamide PA 6.6, UL 94V0  
 Round Pins: Copper alloy, tin plated

### Operating Temperature

-40°C to +85°C (consider de-rating)

### Climatic Category

-25°C/+70°C/21 days (IEC 60068-2-1..3)

### Stock Conditions

+10°C to +60°C  
 relative humidity ≤ 75% yearly average,  
 without dew, maximum value for 30 days-95%

### Vibration Resistance

24 cycles at 15 min. each (IEC 60068-2-6)  
 10 - 60Hz at 0.75mm amplitude  
 60 - 2000Hz at 10g acceleration

### Lead Pull Strength

10N (IEC 60068-2-21)

### Solderability

260°C, ≤ 3 sec. (Wave)  
 350°C, ≤ 1 sec. (Hand)

### Soldering Heat Resistance

260°C, 10 sec. (IEC 60068-2-20)

### Marking

 , 384, 250V, T, Current Rating, Approvals

### Unit Weight

0.82g (approx.)

### Limits for Pre-arcing Time

Rated Current	1.5 x I <sub>Rated</sub>	2.1 x I <sub>Rated</sub>	2.75 x I <sub>Rated</sub>	4 x I <sub>Rated</sub>	10 x I <sub>Rated</sub>
1.00A / 3.15A	> 1h	< 2 min	400ms ... 10s	150ms ... 3s	20ms ... 150ms



### Permissible continuous operating current is ≤ 100% at ambient temperature of 23°C (73.4°F).

Rated Current	Amp Code	Voltage Rating	Breaking Capacity	Voltage Drop 1.0 x I <sub>Rated</sub> max. (mV)	Power Dissipation 1.5 x I <sub>Rated</sub> max. (mW)	Melting Integral 10 x I <sub>Rated</sub> min. (A <sup>2</sup> s)	Approvals				
							VDE	SEMKO	cURus	METI	CCC
1.00A	1100	250V		140	400	2.8	•	•	•	•	P
1.25A	1125	250V		130	500	5	•	•	•	•	P
1.60A	1160	250V	150A / 250VAC <sup>1</sup> 50-60Hz cos φ = 1.0	115	600	8	•	•	•	•	P
2.00A	1200	250V		100	650	14	•	•	•	•	P
2.50A	1250	250V		100	850	32	•	•	•	•	P
3.15A	1315	250V		95	1100	45	•	•	•	•	P

<sup>1</sup> Breaking capacity ratings per approval agencies:

- VDE: 35 A at 250V  
150 A at 250V; Expert Report
- SEMKO: 150 A at 250V
- UL: 50 A at 250V
- METI: 100 A at 250V

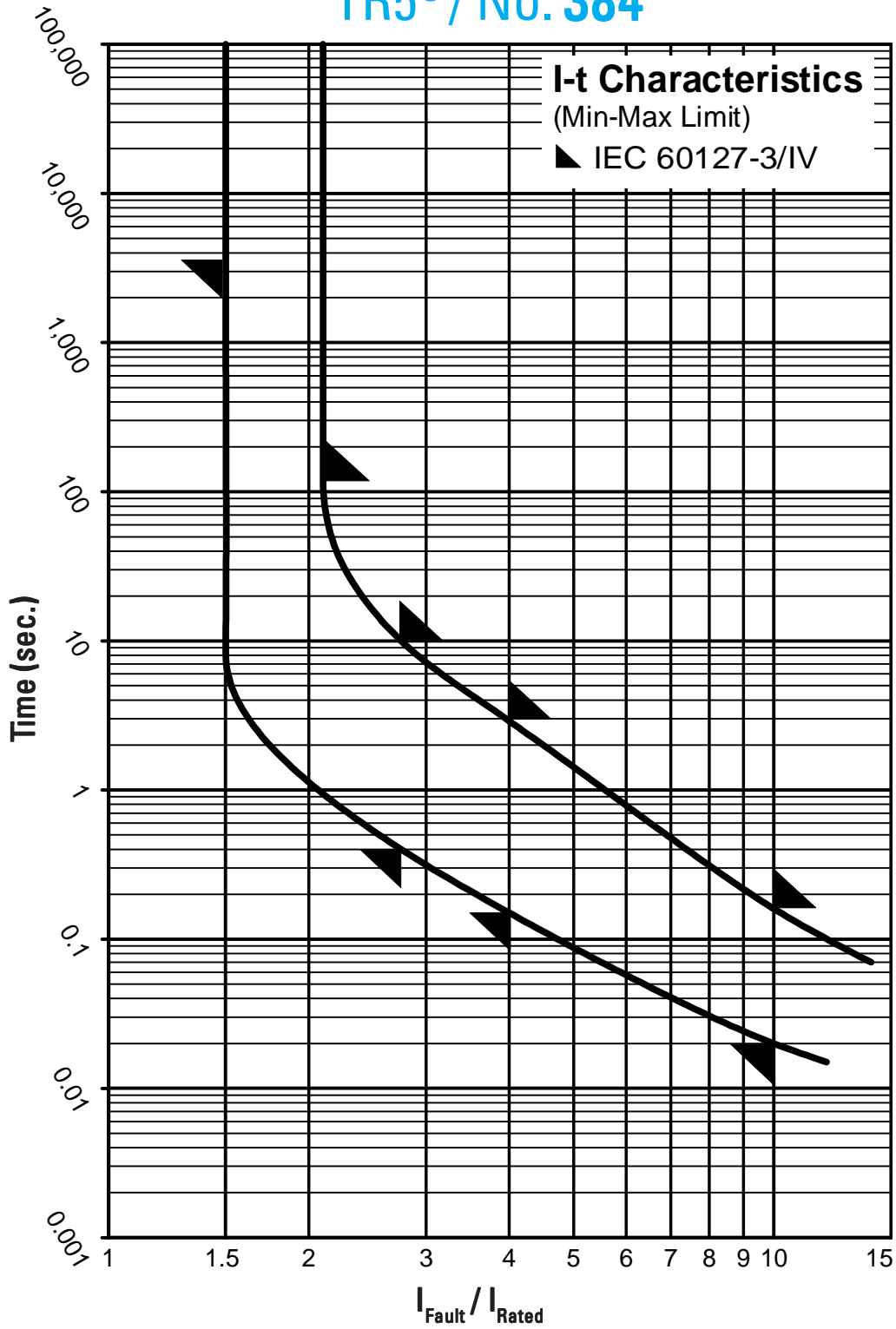
P Pending

### Order Information

Qty.	Order-Number	Series	Amp Code	Pack. Code
		384		

Specifications are subject to change without notice.

# TR5<sup>®</sup> / No. 384



Contact WICKMANN for individual I-t curves