

CONFIDENTIAL. THE INFORMATION CONTAINED IN THIS DOCUMENT IS THE PROPERTY OF COOPER INDUSTRIES, INC. IT IS NOT FOR PUBLIC DISCLOSURE. POSSESSION OF THE INFORMATION DOES NOT CONVEY ANY RIGHT TO LOAN, SELL OR DISCLOSE THE INFORMATION. UNAUTHORIZED REPRODUCTION OR USE OF THE INFORMATION IS PROHIBITED. THIS DOCUMENT IS TO BE RETURNED TO COOPER INDUSTRIES, INC. UPON COMPLETION OF THE PURPOSE FOR WHICH IT IS LOANED OR UPON REQUEST.

COPYRIGHT Cooper Industries, Inc.
This is an unpublished work. The disclosure of this work is limited to select personnel. Further dissemination or disclosure to the public is PROHIBITED. This unpublished work is protected by Federal Copyright law and all rights thereunder are reserved by Cooper Industries, Inc.

SCALE
1x

UNLESS OTHERWISE SPECIFIED TOLERANCES TO BE:
METRIC $\pm .13\text{mm}$
INCHES $\pm .005''$
ANGULAR $\pm 2^\circ$

THIRD ANGLE PROJECTION

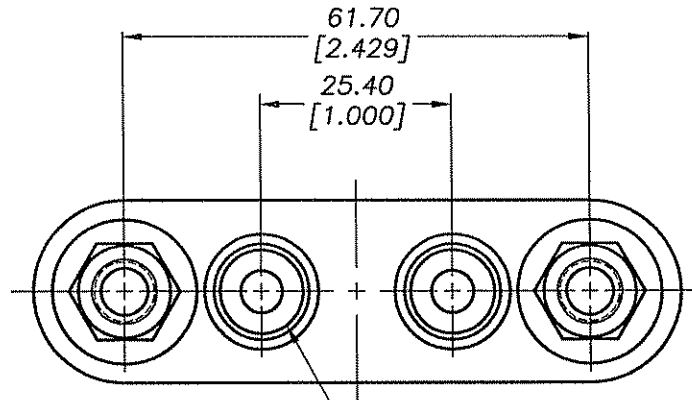
INDICATES CRITICAL DIMENSION OR FEATURE

INCHES (OR U.S. UNITS) IS THE PRIMARY UNIT OF MEASURE

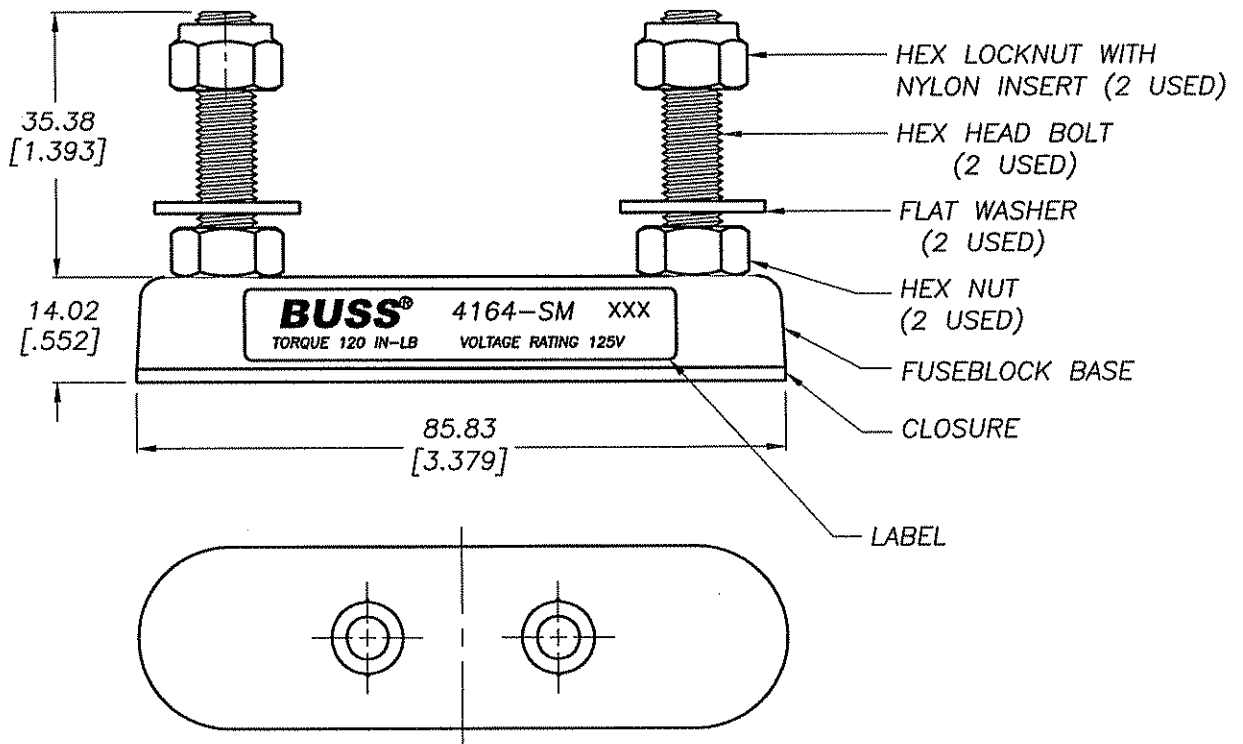
METRIC(mm)
[INCHES]

DATE 1-2-04	NO. 4164-SM
TITLE FUSEBLOCK	
SUP. NO. 4164-SM	DATED 4-28-03
DWG. DAG	CK.
REV. C	
PAGE 1 OF 2	
NO3069	
COOPER Bussmann St. Louis, MO 63178	
C/F NO. 55842	DISTRIBUTION 56 J

CUSTOMER PRINT



11.10 DIA. x 82° COUNTERSINK
[.437]
AND 5.59 DIA. THRU HOLE (2 PLACES)
[.220]



NOTE: ALL HARDWARE IS METRIC, SIZE M8, ZINC PLATED STEEL.