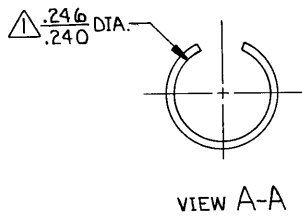
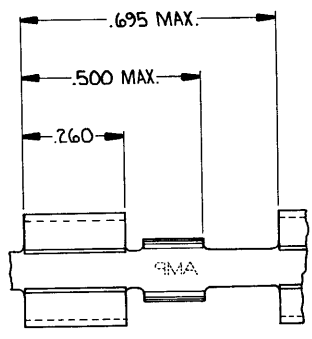


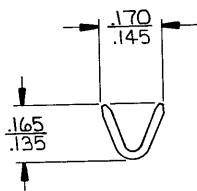
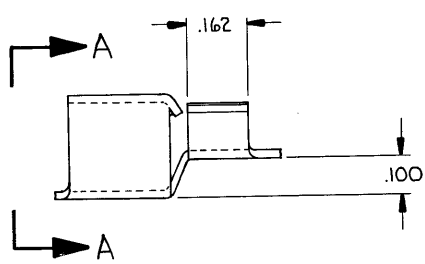
DRAWING MADE IN THIRD ANGLE PROJECTION

THIS DRAWING IS UNPUBLISHED. RELEASED FOR PUBLICATION, 1987  
 © COPYRIGHT 1987 BY AMP INCORPORATED, HARRISBURG, PA. ALL INTERNATIONAL RIGHTS RESERVED. AMP PRODUCTS MAY BE COVERED BY U.S. AND FOREIGN PATENTS AND/OR PATENTS PENDING.

REVISIONS						
P	F	ZONE	LTR	DESCRIPTION	DATE	APPROVED
/		F3		REDRAWN	5-18-87	PHC / JB
		G		REV PER 0710-0427-95	2/4/88	PHC / JB



△ FITS ON .250 ± .003 DIA. PIN



PRE TIN	.020 BRASS	40626-0
PLATING	MATERIAL	PART NO

UNLESS OTHERWISE SPECIFIED DIMENSIONS ARE IN INCHES. TOLERANCES ON: DECIMALS ± .015, ANGLES ± 1.0°	CONTRACT NO	AMP INCORPORATED Harrisburg, Pa.
	DR Phil Collins 5-18-87	
MATERIAL SEE TABLE	CHK J Beck 5-28-87	NAME FUSE RECEPTACLE
	APPD Don [Signature] 5-28-87	
FINISH SEE TABLE	DSGN APPD	SIZE B
	OTHER APPD	FSCM NO 00779
		DRAWING NO 40626
		SCALE 4:1
		SHEET 1 OF 1

CUSTOMER DRAWING

AMP 1470-17