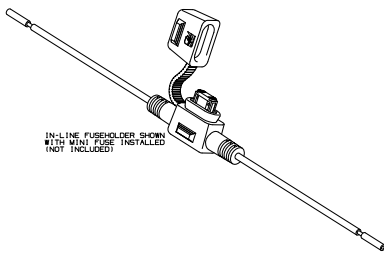
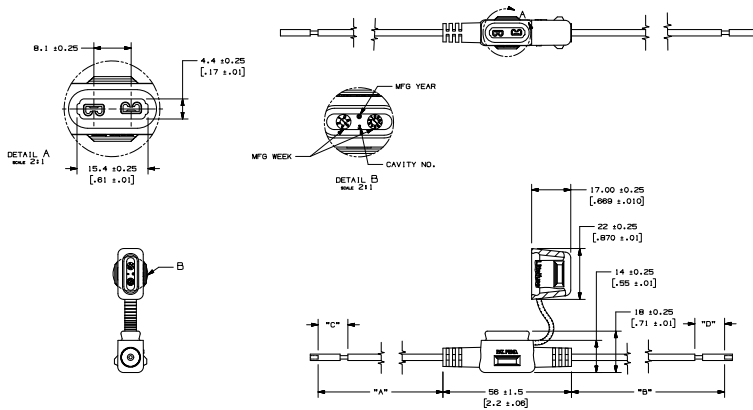


PART NUMBER	"A"	"B"	"C"	"D"	LEAD "A" COLOR	LEAD "B" COLOR
OFHMO02ZXJ	9415 (3.701 ± .21)	9415 (3.701 ± .21)	1312 (.511 ± .08)	1312 (.511 ± .08)	ORANGE	ORANGE
OFHMO02ZXIA	95153 (3.681 ± .12)	95153 (3.681 ± .12)	1245 (.472 ± .08)	812 (.296 ± .08)	RED	ORANGE
OFHMO02ZXIB	1573 (6.575 ± .12)	1573 (6.575 ± .12)	812 (.315 ± .08)	1712 (.674 ± .08)	ORANGE	RED
OFHMO02ZXIC	46254 (18.586 ± .25)	1573 (6.575 ± .12)	812 (.315 ± .08)	154812 (.625 ± .08)	ORANGE	RED
OFHMO02ZXID	183415 (7.238 ± .20)	183415 (7.238 ± .20)	14212 (.561 ± .08)	14212 (.561 ± .08)	ORANGE	ORANGE
OFHMO02ZXIE	2031415 (7.988 ± .20)	2031415 (7.988 ± .20)	N/A	N/A	ORANGE	ORANGE
OFHMO02ZXIF	5015 (2.382 ± .20)	5015 (2.382 ± .20)	812 (.315 ± .08)	812 (.315 ± .08)	ORANGE	ORANGE

LTR	DATE	REVISION	CHK	APD
A	10/30/07	REWORK - RELEASE	BRN	
B	08/06/07	REWORK - CHG TOL FROM .11 TO .12 1.15 CHG VALUE	BRN	
C	07/24/07	REWORK - CHG TO QUANTITY DIPNAIL HOLDING HEIGHT TO (.18) AND STRIP TOLERANCE TO 1.00	BRN	
D	06/18/07	00013605 - ADD OFHMO002ZXJ 00013605 - ADD OFHMO002ZXIC 00013605 - ADD OFHMO002ZXIE 00013605 - ADD OFHMO002ZXIF	BRN	
E	11/02/07	00008805 - CHG STRIP TOL FOR ZXC TO 12.7MM 00008805 - CHG LINE "D" FOR ZXC TO 12.7MM	BRN	
F	06/18/08	00008805 - RELEASE OFHMO002ZXJ 00008805 - RELEASE OFHMO002ZXIC 00008805 - RELEASE OFHMO002ZXIE 00008805 - RELEASE OFHMO002ZXIF	BRN	
G	12/22/08	00008805 - RELEASE OFHMO002ZXJ 00008805 - RELEASE OFHMO002ZXIC 00008805 - RELEASE OFHMO002ZXIE 00008805 - RELEASE OFHMO002ZXIF	BRN	



- NOTES:  
1. HOLDER MATERIAL: BLACK TPV 251 60W 232  
2. CONTACTS: 619H COPPER ALLOY, TIN-PLATED  
3. WIRE: ORANGE, 12 AWG STRANDED COPPER, 125°C RATED, GAL WIRE  
4. CRIMP MUST MEET QES/SCAR 21 STANDARD  
5. RAYLEIGH MAX: 30N, 30°C  
6. FUSEHOLDERS SHOULD NOT BE PLACED UNDER TENSION IN FINAL APPLICATION  
7. MAX TEMPERATURE 125°C

UNLESS OTHERWISE SPECIFIED, DIMENSIONS ARE IN MILLIMETERS. DIMENSIONS IN BRACKETS ( ) ARE INCHES.	
UNLESS OTHERWISE SPECIFIED, DIMENSIONS DO NOT INCLUDE PLATING.	
⊕	DENOTES CRITICAL CHARACTERISTIC.
⊖	DENOTES OPA DIMENSIONS - MINIMUM OPA VALUE
CPK	DENOTES A CHARACTERISTIC THAT PROVIDES AN INDICATION OF PROCESS PERFORMANCE. PROCEDURE FOR MEASUREMENT AND TOLERANCE TO BE DEFINED IN LITELIFE/USE INSPECTION INSTRUCTIONS
ST	DENOTES DIMENSIONS - MINIMUM OF VALUE MUST BE WITHIN THE DIMENSIONAL LIMITATIONS SHOWN ON DRAWING AND INITIALLY LOCATED TO ALLOW FOR MAXIMUM TOOL LIFE
CP	
COPIES TO	MATE SPEC SEE NOTES
1 9 18	FINISH SEE NOTES
2 10 18	
3 12 20	
4 13 21	DRW DATE 03/29/07 SCALE 1:1
5 14 23	CHK DATE SUPER SK
6 15 33	
7 16 43	APPD DATE FINISH GOOD W/ GRAB/2/08
8 17 53	
TOLERANCE UNLESS OTHERWISE SPECIFIED	
ONE PLACE DEC +/- .15 THREE PLACE DEC +/- .001	
TWO PLACE DEC +/- .10 ANGULAR +/- .1°	
REV	TITLE MINI IN-LINE FUSEHOLDER
REV	REVISON/DATE/NO. OFHMO02ZXJ
REV	REVISON/DATE/NO. OFHMO02ZXJ

METRIC



OUTLINE  
OFHMO02ZXJ

CHG GENERATED DRAWING - NO PENCIL CHANGES ALLOWED