

## IEC Appliance Inlet C14 with Fuseholder 1- or 2-pole

V-Lock



Screw-On Version



Pick &amp; Place Version

**Description**

- Panel Mount: Sandwich/rear-side
- 2 Functions: Appliance Inlet Protection class I, with or without Fuseholder for fuse-links 5 x 20 mm on the rear-side 1- or 2-pole
- For PCB mounting
- Pick and place version

**Approvals**

- VDE Certificate Number: 40024857
- UL File Number: E93617, E96454
- CSA File Number: 38456

**Characteristics**

- PCB mount with snap-in or screw-on feet
- Suitable for automatic PCB assembling
- All single elements are already wired
- Fuseholder on the inside of the equipment prevents accidental use of incorrect fuse-links by the user
- With or without rear-side insulation cover
- Blister tray meets ESD requirements
- Qualified for use in equipment according IEC/EN 60950

**Other versions on request**

- Ground terminal with quick-connect terminal 6,3 x 0,8 mm
- Ground terminal with solder terminal
- For protection class II

**References****Weblinks**

[General Product Information](#), [Approvals](#), [RoHS](#), [CHINA-RoHS](#), [Mating Connectors](#), [e-Store](#), [SCHURTER-Stock-Check](#), [Distributor-Stock-Check](#), [Accessories](#)

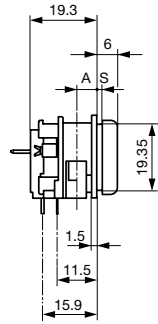
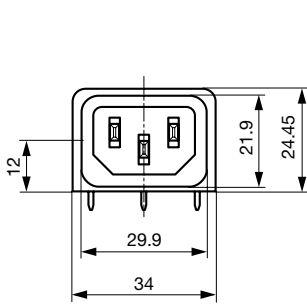
Newly available variants corresponding to V-Lock mating cordset. The connector is equipped with a notch intended for use with the latching cordset. The cord latching system prevents against accidental removal of the cordset.

**Technical Data**

Ratings IEC	10A / 250VAC; 50Hz
Ratings UL/CSA	10A / 250VAC; 60Hz
Dielectric Strength	> 3kVAC between L-N > 4kVAC between L/N-PE (1 min/50Hz)
Allowable Operation Temp.	-25°C to 70°C
Degree of Protection	from front side IP 40 acc. to IEC 60529
Protection Class	Suitable for appliances with protection class 1 acc. to IEC 61140
Terminal	For PCB mounting
Panel Thickness s	Snap-in: 1.5/2/2.5/3 mm
Material: Housing	Thermoplastic, black, UL 94V-0

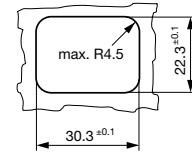
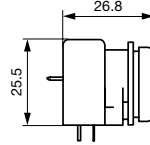
Appliance Inlet	C14 acc. to IEC/EN 60320-1, UL 498, CSA C22.2 no. 42 (for cold conditions) pin-temperature 70 °C, 10A, Protection Class 1
Fuseholder	optional, 1 or 2 pole, Shocksafe category PC2 acc. to IEC 60127-6, for fuse-links 5 x 20 mm
Rated Power Acceptance @ Ta 23 °C	5 x 20: 3.15W (1 pole)/ 2.5W (2-pole) per pole
Power Acceptance @ Ta > 23°C	Admissible power acceptance at higher ambient temperature see derating curves

## Dimensions

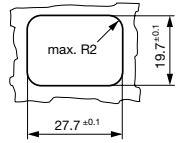
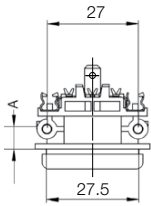


A = 6 mm for standard versions  
 A = 5 mm for pick and place versions  
 S = 0 mm for mounting from rear-side

with insulation cover



for mounting from rear-side

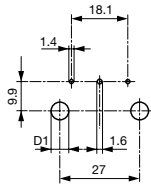


A = 6 mm for standard versions  
 A = 5 mm for pick and place versions

for sandwich mounting

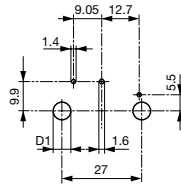
## Drilling diagrams

without fuseholder



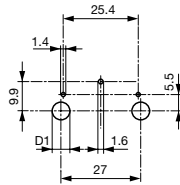
D1 for snap-in mounting =  $6 \pm 0.05$   
 D1 for self-tapping screw =  $3.6 \pm 0.1$

with 1-pole fuseholder



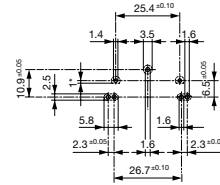
D1 for snap-in mounting =  $6 \pm 0.05$   
 D1 for self-tapping screw =  $3.6 \pm 0.1$

with 2-pole fuseholder



D1 for snap-in mounting =  $6 \pm 0.05$   
 D1 for self-tapping screw =  $3.6 \pm 0.1$

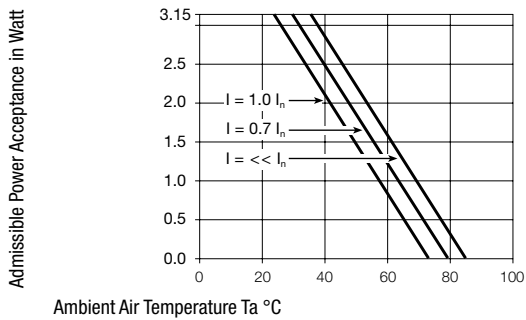
Pick and Place versions  
 without / with 1-pole or  
 2-pole fuseholder



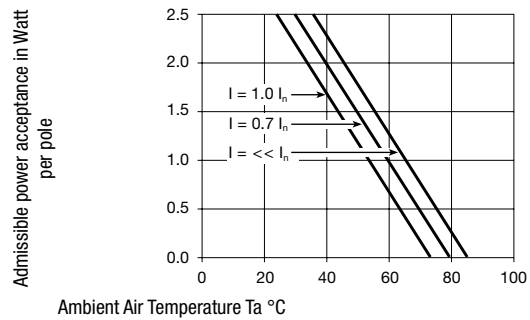
1\* only for protection class II

## Derating Curves

1-pole



2-pole



## Variants

Mounting side	Panel mounting	Panel Thickness s [mm]	Fuseholder	Ground terminal 4.8 x 0.8 mm	Ground terminal direction	Packaging	Order Number
Sandwich	Screw	1.5	-	●	angled to pin axis	-	GSF1.0002.31
Sandwich	Screw	1.5	-	●	straight	-	GSF1.0001.31
Sandwich	Screw	2	-	●	angled to pin axis	-	GSF1.0002.41
Sandwich	Screw	2	-	●	straight	-	GSF1.0001.41
Sandwich	Screw	2.5	-	●	angled to pin axis	-	GSF1.0002.51
Sandwich	Screw	2.5	-	●	straight	-	GSF1.0001.51
Sandwich	Screw	3	-	●	angled to pin axis	-	GSF1.0002.61
Sandwich	Screw	3	-	●	straight	-	GSF1.0001.61
Sandwich	Screw	1.5	1-pole	●	angled to pin axis	-	GSF1.1002.31
Sandwich	Screw	1.5	1-pole	●	straight	-	GSF1.1001.31
Sandwich	Screw	2	1-pole	●	angled to pin axis	-	GSF1.1002.41
Sandwich	Screw	2	1-pole	●	straight	-	GSF1.1001.41
Sandwich	Screw	2.5	1-pole	●	angled to pin axis	-	GSF1.1002.51
Sandwich	Screw	2.5	1-pole	●	straight	-	GSF1.1001.51
Sandwich	Screw	3	1-pole	●	angled to pin axis	-	GSF1.1002.61
Sandwich	Screw	3	1-pole	●	straight	-	GSF1.1001.61
Sandwich	Screw	1.5	2-pole	●	angled to pin axis	-	GSF1.2002.31
Sandwich	Screw	1.5	2-pole	●	straight	-	GSF1.2001.31
Sandwich	Screw	2	2-pole	●	angled to pin axis	-	GSF1.2002.41
Sandwich	Screw	2	2-pole	●	straight	-	GSF1.2001.41
Sandwich	Screw	2.5	2-pole	●	angled to pin axis	-	GSF1.2002.51
Sandwich	Screw	2.5	2-pole	●	straight	-	GSF1.2001.51
Sandwich	Screw	3	2-pole	●	angled to pin axis	-	GSF1.2002.61
Sandwich	Screw	3	2-pole	●	straight	-	GSF1.2001.61
Sandwich	Snap-in	1.5	-	●	angled to pin axis	-	GSF1.0202.31
Sandwich	Snap-in	1.5	-	●	straight	-	GSF1.0201.31
Sandwich	Snap-in	2	-	●	angled to pin axis	-	GSF1.0202.41
Sandwich	Snap-in	2	-	●	straight	-	GSF1.0201.41
Sandwich	Snap-in	2.5	-	●	angled to pin axis	-	GSF1.0202.51
Sandwich	Snap-in	2.5	-	●	straight	-	GSF1.0201.51
Sandwich	Snap-in	3	-	●	angled to pin axis	-	GSF1.0202.61
Sandwich	Snap-in	3	-	●	straight	-	GSF1.0201.61
Sandwich	Snap-in	1.5	1-pole	●	angled to pin axis	-	GSF1.1202.31
Sandwich	Snap-in	1.5	1-pole	●	straight	-	GSF1.1201.31
Sandwich	Snap-in	2	1-pole	●	angled to pin axis	-	GSF1.1202.41
Sandwich	Snap-in	2	1-pole	●	straight	-	GSF1.1201.41
Sandwich	Snap-in	2.5	1-pole	●	angled to pin axis	-	GSF1.1202.51
Sandwich	Snap-in	2.5	1-pole	●	straight	-	GSF1.1201.51
Sandwich	Snap-in	3	1-pole	●	angled to pin axis	-	GSF1.1202.61
Sandwich	Snap-in	3	1-pole	●	straight	-	GSF1.1201.61
Sandwich	Snap-in	1.5	2-pole	●	angled to pin axis	-	GSF1.2202.31
Sandwich	Snap-in	1.5	2-pole	●	straight	-	GSF1.2201.31
Sandwich	Snap-in	2	2-pole	●	angled to pin axis	-	GSF1.2202.41
Sandwich	Snap-in	2	2-pole	●	straight	-	GSF1.2201.41
Sandwich	Snap-in	2.5	2-pole	●	angled to pin axis	-	GSF1.2202.51
Sandwich	Snap-in	2.5	2-pole	●	straight	-	GSF1.2201.51
Sandwich	Snap-in	3	2-pole	●	angled to pin axis	-	GSF1.2202.61
Sandwich	Snap-in	3	2-pole	●	straight	-	GSF1.2201.61
Rear-Side	Screw	6	-	●	angled to pin axis	-	GSF1.0002.01
Rear-Side	Screw	6	-	●	straight	-	GSF1.0001.01
Rear-Side	Screw	6	1-pole	●	angled to pin axis	-	GSF1.1002.01
Rear-Side	Screw	6	1-pole	●	straight	-	GSF1.1001.01
Rear-Side	Screw	6	2-pole	●	angled to pin axis	-	GSF1.2002.01
Rear-Side	Screw	6	2-pole	●	straight	-	GSF1.2001.01
Rear-Side	Snap-in	6	-	●	angled to pin axis	-	GSF1.0202.01

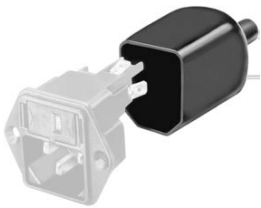
Mounting side	Panel mounting	Panel Thickness s [mm]	Fuseholder	Ground terminal 4.8 x 0.8 mm	Ground terminal direction	Packaging	Order Number
Rear-Side	Snap-in	6	-	●	straight	-	GSF1.0201.01
Rear-Side	Snap-in	6	1-pole	●	angled to pin axis	-	GSF1.1202.01
Rear-Side	Snap-in	6	1-pole	●	straight	-	GSF1.1201.01
Rear-Side	Snap-in	6	2-pole	●	angled to pin axis	-	GSF1.2202.01
Rear-Side	Snap-in	6	2-pole	●	straight	-	GSF1.2201.01
Rear-Side	Metal snaps	6	-	●	angled to pin axis	Blister tray	GSF1.3402.01
Rear-Side	Metal snaps	6	1-pole	●	angled to pin axis	Blister tray	GSF1.4402.01
Rear-Side	Metal snaps	6	2-pole	●	angled to pin axis	Blister tray	GSF1.5402.01

Insulation cover must be ordered separately. Order No. 0098.0078

**Packaging unit** 50 Pcs

## Accessories

### Description



Assorted Covers  
Rear Cover

0098.0078

## Mating Outlets/Connectors

### Category / Description

#### Appliance Outlet Overview complete



IEC Appliance Outlet F, Screw-on Mounting, Front Side, Solder Terminal	4787
IEC Appliance Outlet F, Snap-in Mounting, Front Side, Solder or Quick-connect Terminal	4788
IEC Appliance Outlet F or H, Screw-on Mounting, Front Side, Solder, PCB or Quick-connect Terminal	5091
IEC Appliance Outlet F or H, Screw-on Mounting, Front Side, Solder or Quick-connect Terminal	5092

[Appliance Outlet further types to GSF1](#)

#### Connector Overview complete



IEC Connector C15, Rewireable, Straight	0101
IEC Connector C15A, Rewireable, Straight	0102
IEC Connector C15A, Rewireable, Straight	0102-G
IEC Connector C15A, Rewireable, Angled	0112
IEC Connector C13, Rewireable, Angled	4012

[Connector further types to GSF1](#)

...

#### Power Cord Overview complete



Power Cord with IEC Connector C13, Angled	0311
Power Cord with IEC Connector C13, Angled	3011
Power Cord with IEC Connector C13, Angled	3012
Power Cord with IEC Connector C13, Angled	3013
Power Cord with IEC Connector C13	3020

[Power Cord further types to GSF1](#)

...