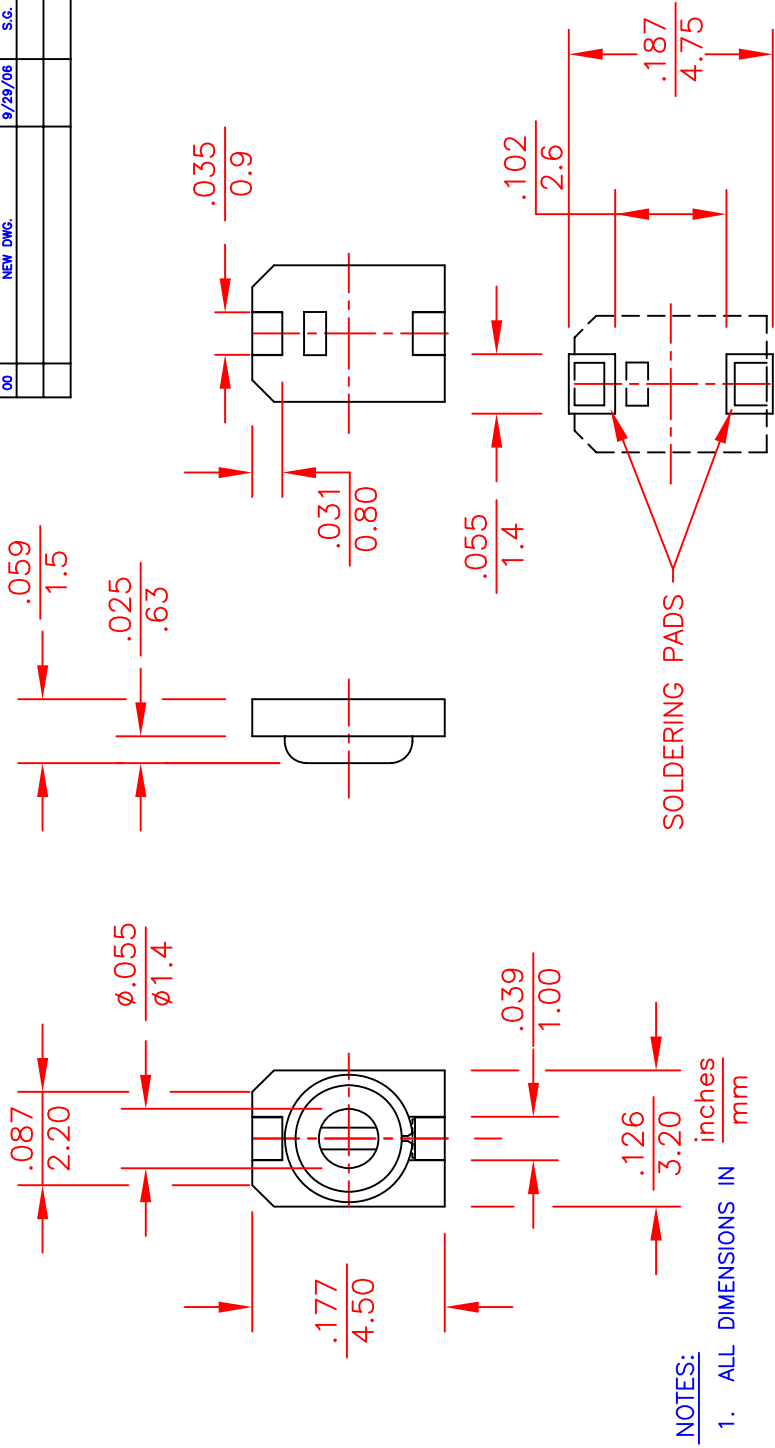


REV.	DESCRIPTION	DATE	APP.
00	NEW DWG.	9/29/06	S.G.



**NOTES:**  
1. ALL DIMENSIONS IN inches / mm

SUGGESTED SURFACE MOUNT LAYOUT  
RECOMMENDED THICKNESS OF SOLDER  $\frac{.0006}{0.15}$

SPECS	PART NUMBER	SGC3S030	SGC3S060	SGC3S100	SGC3S200	SGC3S300
	COLOR CODE	BLACK	BLUE	IVORY	PINK	GREEN
Capacitance (pF min.)	less than	1.2	2.2	3.0	5.5	8.0
Capacitance (pF max.)	more than	3.0	6.0	10.0	20.0	30.0
Temperature coefficient (ppm/°C)		N470±60	N470±60	N1000±250	0±500	-750±500
Q (at 1MHz and Cmax)	over	300	500	500	500	500
Insulation resistance		10 <sup>4</sup> megohms				
Torque		0.14 to 1.0 oz-in / 10 to 72 gf-cm				
DC Working voltage		500 VDC	500 VDC	500VDC	500VDC	500 VDC
DC Withstanding voltage		1000 VDC	1000VDC	1000 VDC	1000 VDC	1000VDC
Operating temperature °C		-40 to +85				
Self resonant frequency @ Cmax		2.0 GHz	1.5 GHz	1.3 GHz	0.8GHz	0.6 GHz

TOLERANCES: (EXCEPT AS NOTED)	SPRAGUE GOODMAN ELECTRONICS INC. 1700 SHAMES DRIVE WESTBURY, NY 11590
DECIMAL: ±.016 in	MATERIAL: SCALE: 8:1
FRACTIONAL: 1/64	DRAWN BY: D.DITLYA
ANGULAR: 1/64	APPROVED: S.GRINBERG
TITLE: OUTLINE DWG SGC3S PRODUCT LINE	
DATE: 9/29/06	DRAWING NUMBER: SGC3S
	Rev. 00