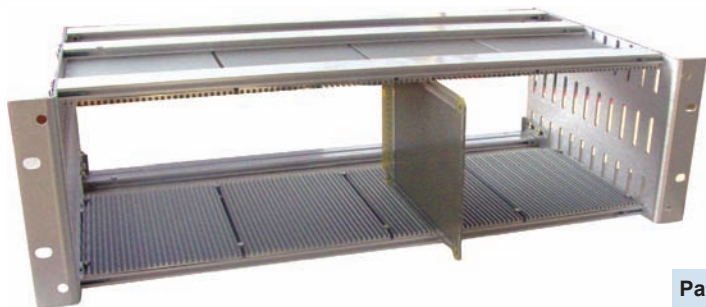
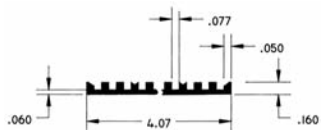




# EIA -Based VectorPak™ Subrack Systems



CCA13C/90 - Assembled Subrack with continuous guide plate.



## VectorPak™ Continuous Guide Plate

Card Racks with Continuous Guide Plate allows card placement on 0.150" centers. Guide plates created from extruded 6063-T6 aluminum. 0.80" thick brushed aluminum side plates with clear irridite finish. Rear "T" Struts included for mounting of connectors (Vector P/N HD34).

| Part No.             | Dimensions (H x W x D)  | Description/ Installed             |
|----------------------|---|------------------------------------|
| 2U Rack<br>CCA10C/90 | Card height min. 0.75" to 2.75" max. X 6.5" L<br>2U (3.50") X 19.0" X 12.0" | Continuous guide plate, conductive |
| 3U Rack<br>CCA13C/90 | Card height min. 2.50" to 4.50" max. X 6.5" L<br>3U (5.25") X 19.0" X 9.0"  | Continuous guide plate, conductive |
| 4U Rack<br>CCA14C/90 | Card height min. 4.25" to 6.25" max. X 9.6" L<br>4U (7.00") X 19.0" X 12.0" | Continuous guide plate, conductive |
| 5U Rack<br>CCA15C/90 | Card height min. 6.00" to 8.00" max. X 9.6" L<br>5U (8.75") X 19.0" X 12.0" | Continuous guide plate, conductive |

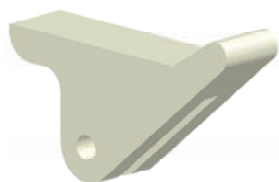
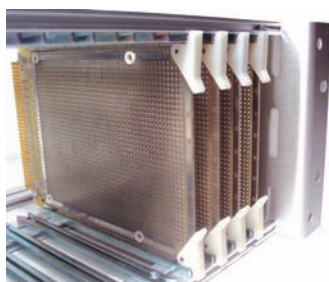


CCA14F/90 - Subrack frame only

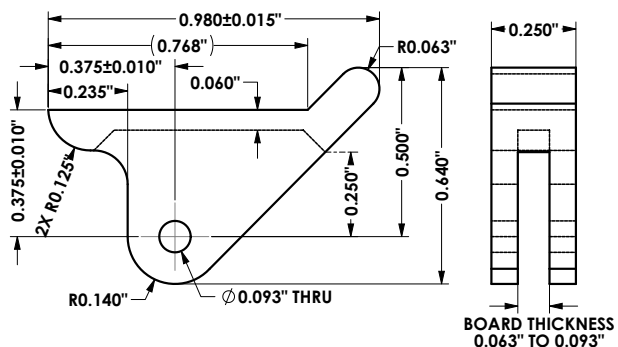
## VectorPak™ Card Frame Only

Card Rack Frame only, no card guides (guides sold separately). Will accept any VectorPak™ CG2-series card guide. More economical when only a few cards needed. Rear "T"-struts included for mounting of connectors (Vector P/N HD34).

| Part No.             | Description/ Installed | Rack Outer Dimensions (H x W x D) | Kit       |
|----------------------|------------------------|-----------------------------------|-----------|
| 2U Rack<br>CCA10F/90 | Frame only             | 2U (3.50") X 19" X 12"            | CCK10F/90 |
| 3U Rack<br>CCA13F/90 | Frame only             | 3U (5.25") X 19" X 9"             | CCK13F/90 |
| 4U Rack<br>CCA15F/90 | Frame only             | 4U (7.00") X 19" X 12"            | CCK15F/90 |
| 5U Rack<br>CCA17F/90 | Frame only             | 5U (8.75") X 19" X 12"            | CCK17F/90 |



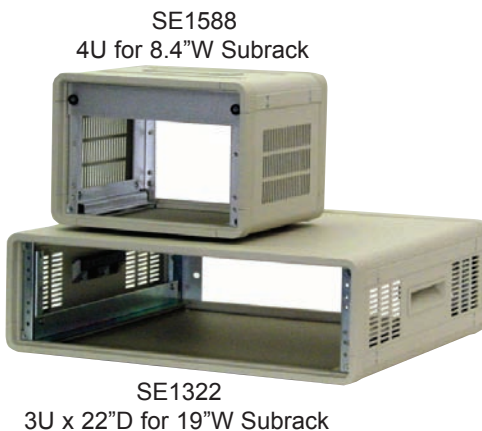
## Rotation Type Ejector Handle - HA9



| Part No. | Pkg Qty |
|----------|---------|
| HA9/4    | 4       |
| HA9/C    | 100     |

- Card ejector, corner mounting
- Supports up to 40 lbs extraction force
- White nylon, (hardware included)

## Attractive & Extremely Rugged Benchtop/Desktop Outer Enclosures



EIA Subracks

